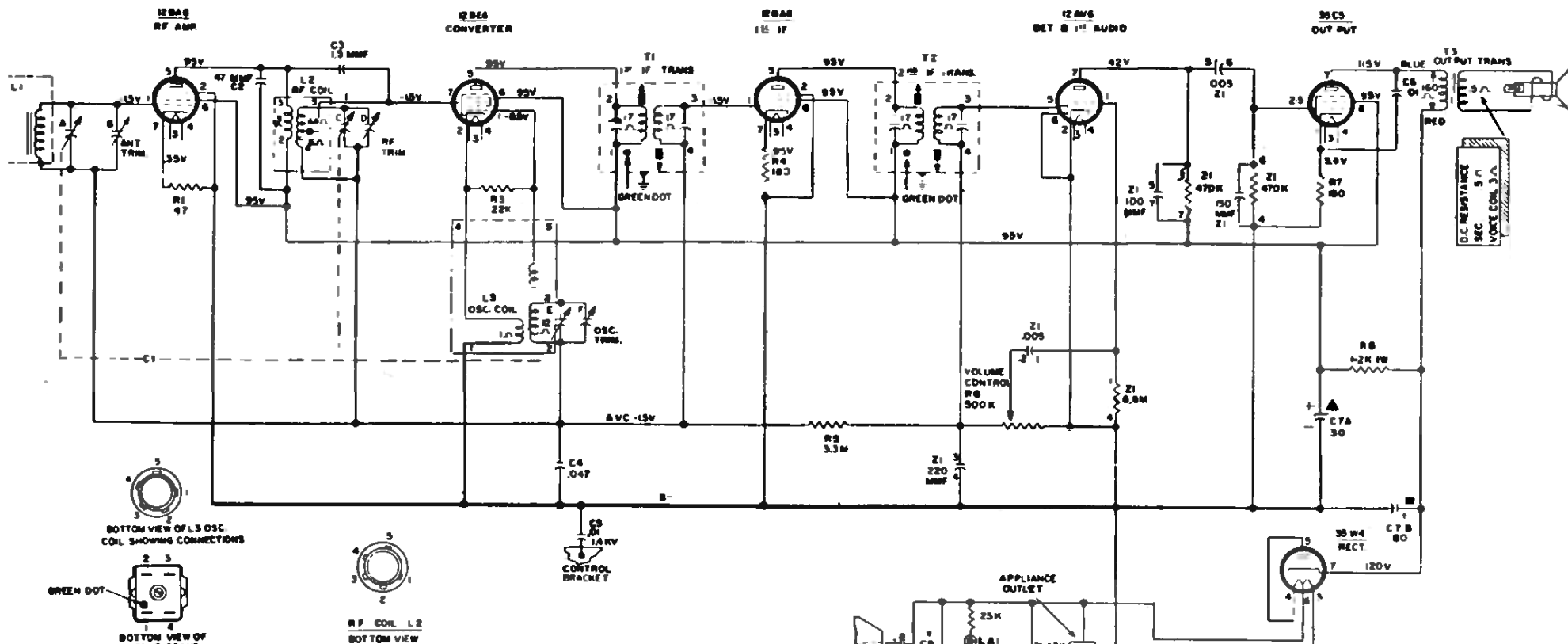


WESTINGHOUSE Models H-775L6A, H-776L6A, Chassis V-2401-4

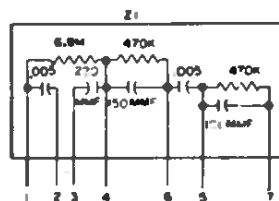


NOTES

1. ALL VOLTAGES MEASURED FROM COMMON NEGATIVE USING A V.T.V.M. VOLUME CONTROL AT MINIMUM
LINE VOLTAGE SET AT 117 V-AC READINGS SHOULD BE AS SHOWN $\pm 20\%$. TUNING CAPACITOR TUNED OFF STATION

2. ALL CAPACITANCE VALUES IN MFD AND ALL RESISTANCE VALUES IN OHMS UNLESS OTHERWISE SPECIFIED.

3.4 EARLY PRODUCTION HAS .025



CHASSIS NO. V-2401-4

