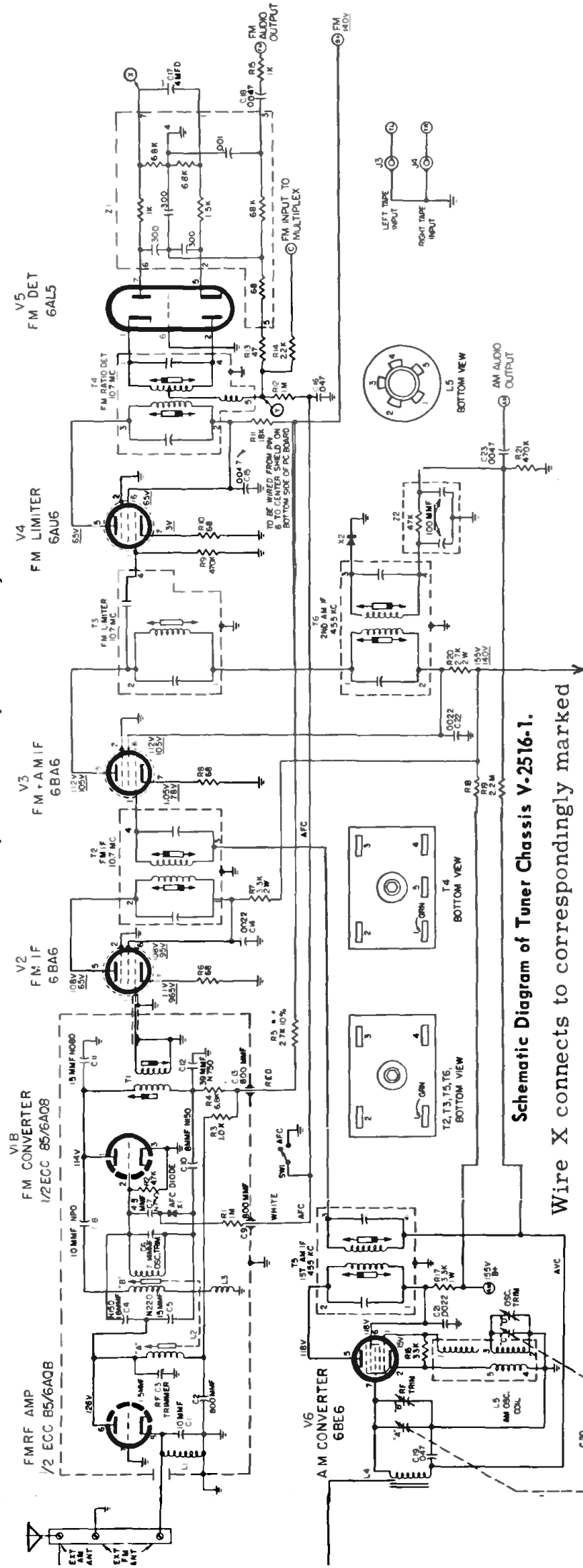


# WESTINGHOUSE

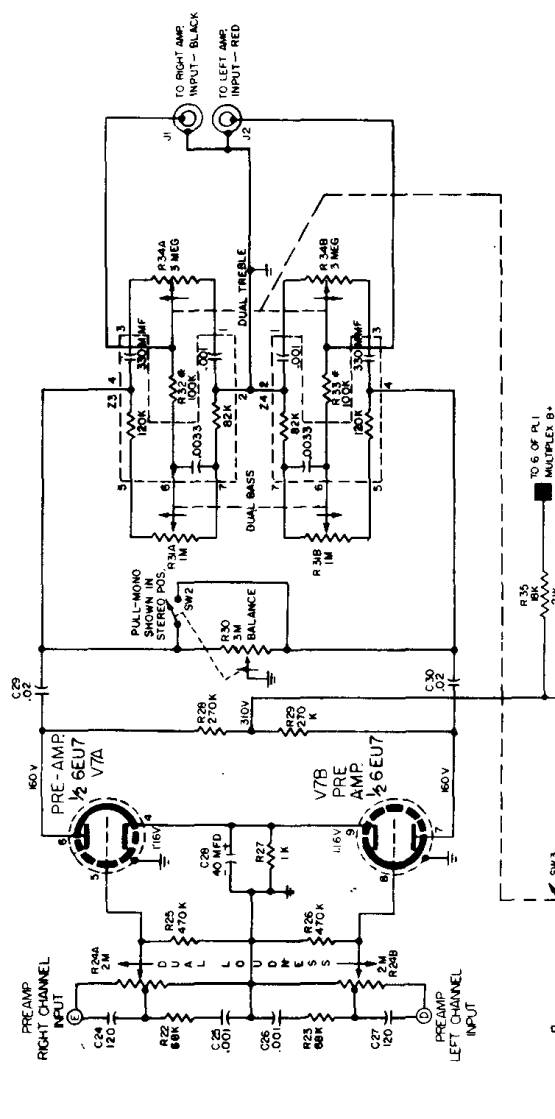
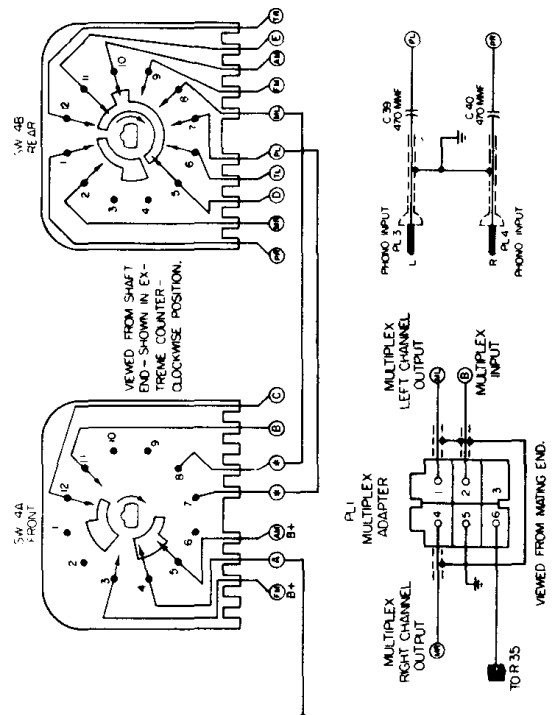
Chassis V-2516-1 Tuner, V-2510-14 Amplifier  
Models H-M1430, H-M1431, H-M1432, H-M1433



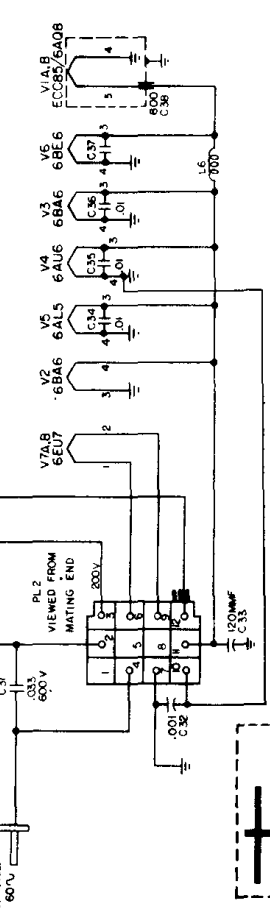
# Westinghouse

of circuit printed on preceding page.

Wire X connects to correspondingly marked point of balance

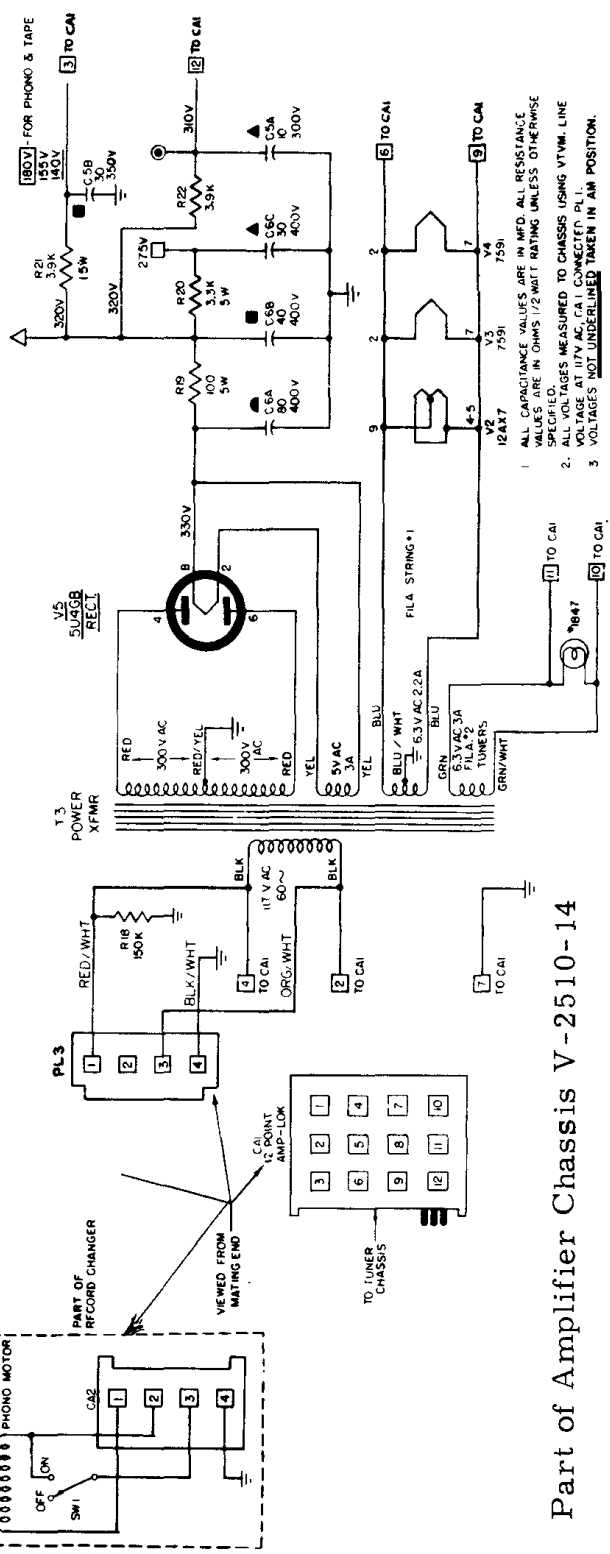


1. ALL CAPACITANCE VALUES IN MFD. AND ALL RESISTANCE VALUES IN OHMS,  $\frac{1}{2}$  WATT, UNLESS OTHERWISE SPECIFIED.
2. D.C. VOLTAGES MEASURED FROM POINTS INDICATED TO CHASSIS GROUND—NO SIGNAL APPLIED, USING A V.T.V.M. LINE VOLTAGE SET AT 117 V.A.C. LOUDNESS AT MIN. TUNING CAP. AT MAX.
3. \*R32 B R33 NOT INCLUDED IN PACKAGE CIRCUITS 22 & 23.
4. UNDERLINED VOLTAGES TAKEN IN FM POSITION; OTHER VOLTAGES TAKEN IN AM POSITION.
5. ALL REFERENCES TO LEFT AND RIGHT ARE AS VIEWED FROM FRONT OF SET.
6. REAR SECTIONS OF CONTROLS (FARTHEST FROM SHAFTS) ARE RIGHT CHANNEL.
7. ARROWS ON CONTROLS INDICATE CW ROTATION (CONTROL VIEWED FROM FRONT TO REAR).
8. \* INDICATES RIVET CONN. THROUGH WAFER FROM FRONT TO REAR.



**MODELS**  
**H-M1430** (walnut)  
**H-M1431** (cherry traditional)  
**H-M1432** (cherry provincial)  
**H-M1433** (maple)

**CHASSIS**  
**V-2516-1 Tuner Pre-Amp**  
**V-2510-14 Amplifier**



Part of Amplifier Chassis V-2510-14

WESTINGHOUSE

Chassis V-2516-1 with V-2510-14,  
Models H-M1430 through H-M1433

