

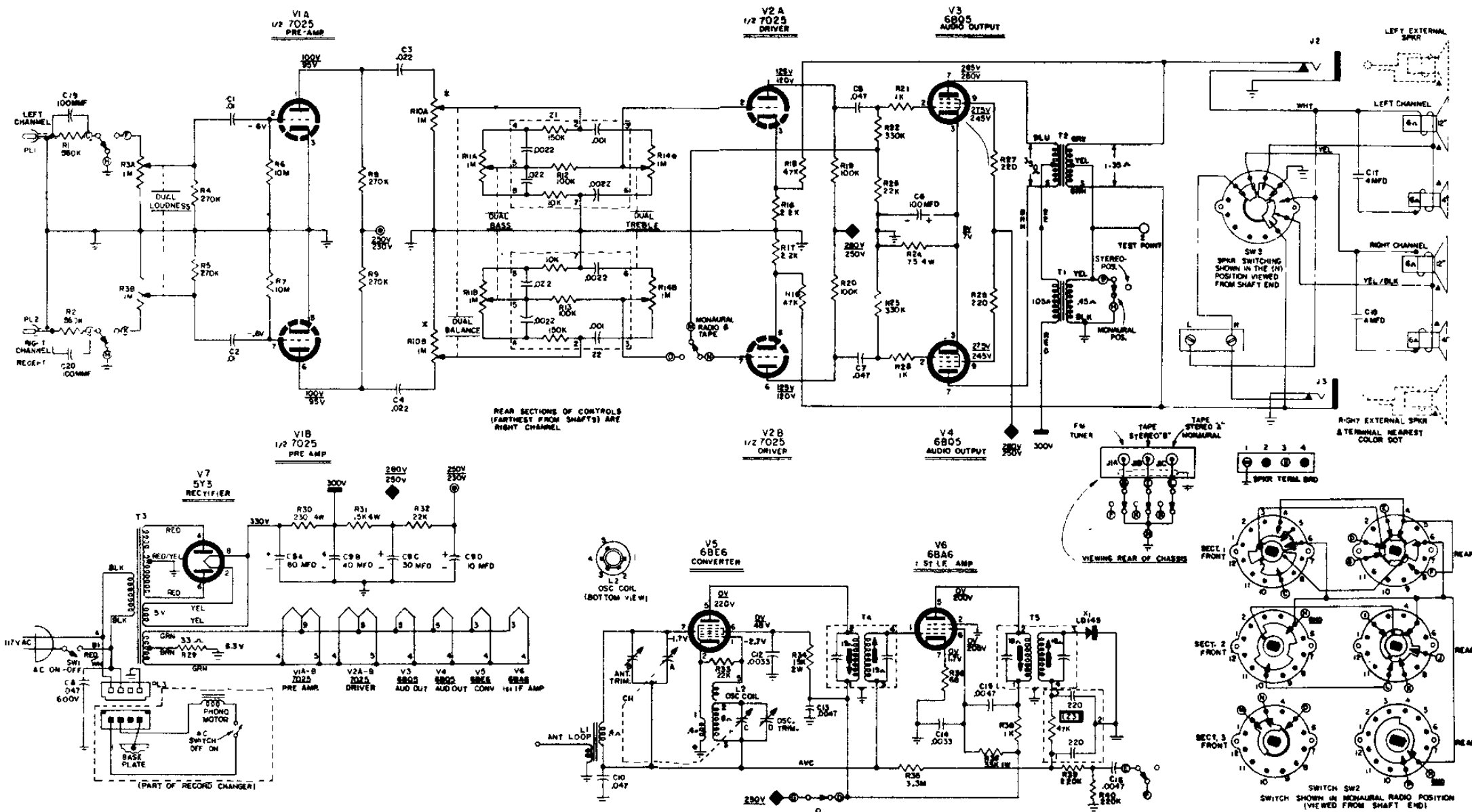
WESTINGHOUSE Chassis V-2509-2

Models H-R1200, H-R1201, H-R1202, H-R1203, and H-R1204

NOTES

1. ALL CAPACITANCE VALUES IN MFD. & ALL RESISTANCE VALUES IN OHMS UNLESS OTHERWISE SPECIFIED.
2. ALL VOLTAGES ARE MEASURED FROM POINTS INDICATED TO CHASSIS GROUND USING A VTVM. LINE VOLTAGE SET AT 117V A.C., NO SIGNAL INPUT, LOUDNESS AT MINIMUM, TUNING CAPACITOR SET AT MAXIMUM.
3. VOLTAGES SHOWN UNDERLINED ARE WITH SWITCH SW2 IN ALL POSITIONS EXCEPT RADIO.
4. ALL REFERENCES TO LEFT AND RIGHT ARE AS VIEWED FACING FRONT OF SET.

* R 10 IS A SPECIAL CONTROL WITH OPPOSITE TAPERS ON FRONT AND REAR SECTIONS.
WESTINGHOUSE REPLACEMENT PART MUST BE USED.



WESTINGHOUSE Chassis V-2509-1

Models H-R1100, H-R1101, H-R1102, H-R1103

