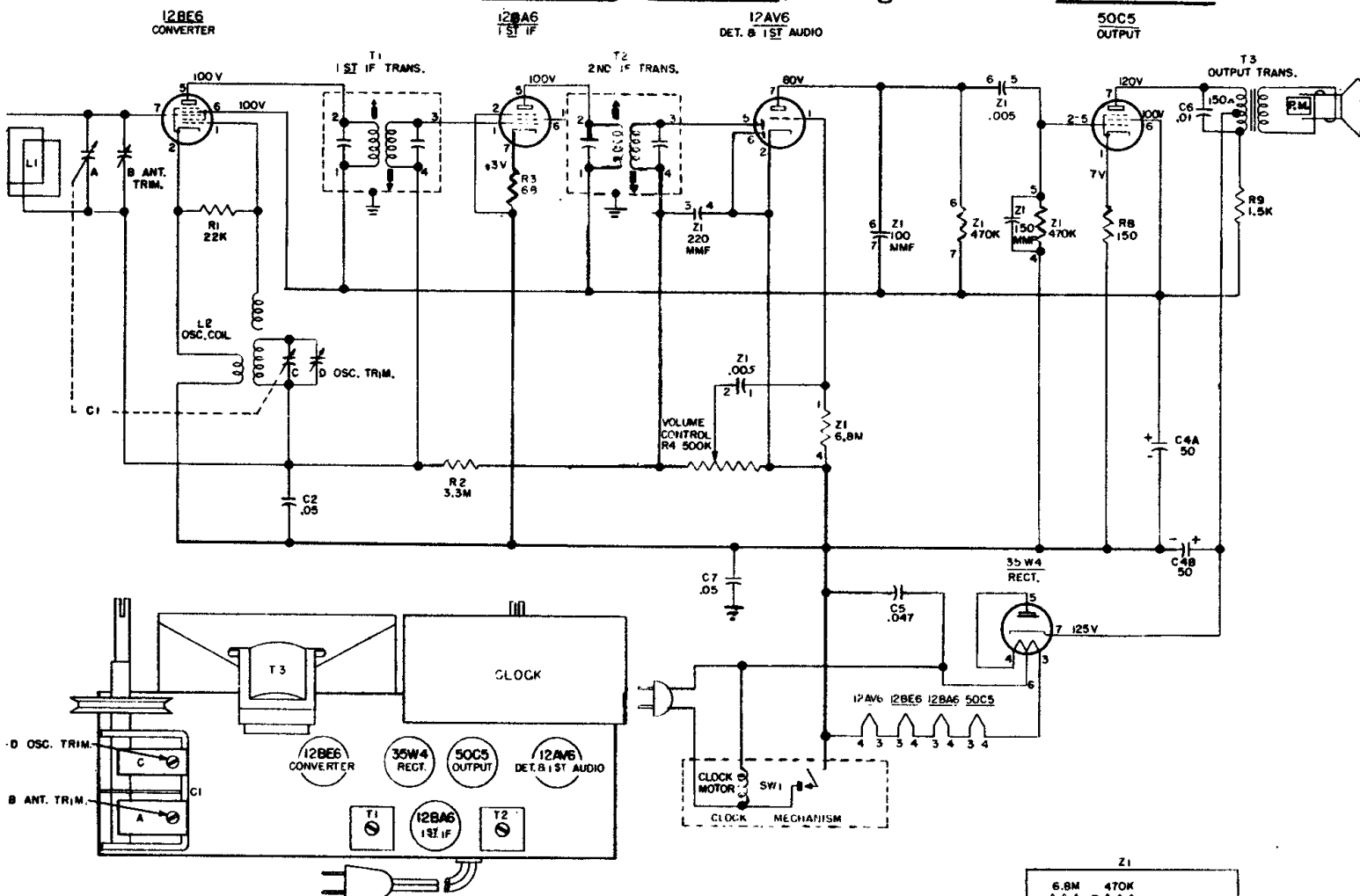


Westinghouse

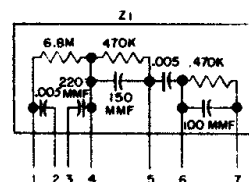
Models H-391T5, H-392T5, H-394T5,
and H-404T5, Chassis V-2157-14.

Similar Models are H-420T5, H-421T5, using Chassis V-2157-13.



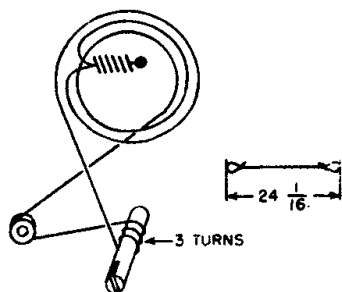
NOTES:-

1. ALL VOLTAGES MEASURED FROM COMMON NEGATIVE USING A 20,000 OHM / VOLT METER. LINE VOLTAGE SET AT 117 V.A.C. READINGS SHOULD BE AS SHOWN $\pm 20\%$.
2. ALL CAPACITANCE VALUES IN MFD. AND ALL RESISTANCE VALUES IN OHMS, UNLESS OTHERWISE SPECIFIED.



REMOVAL OF CHASSIS FROM CABINET

1. Remove the four control knobs by pulling them off the shafts.
2. Remove the transparent shield which protects the radio dial pointer by pressing the left edge (as viewed from the front) toward the hub of the dial pointer. This unlocks the shield from the cabinet.
3. Pull the dial pointer off its shaft.
4. Remove the two screws from the bottom of the cabinet, and slide out the chassis.



ALIGNMENT

| Step | Connect Signal Generator to — | Signal Generator Frequency | Radio Dial | Adjust for Maximum Output |
|------|---|----------------------------|------------------|---|
| 1 | Stator of ant. tuning capacitor (A) through a 200 mmf capacitor | 455 kc. | Minimum capacity | Top and bottom slugs of T2 and T1 in order given* |
| 2 | Same as step 1 | 1625 kc. | Minimum capacity | Oscillator trimmer (D) |
| 3 | Radiated signal | 1400 kc. | 1400 kc. | Antenna trimmer (B) |

*It is recommended that a fiber aligning tool that snugly fits the slot in the powdered iron core be used to prevent chipping of the slot.