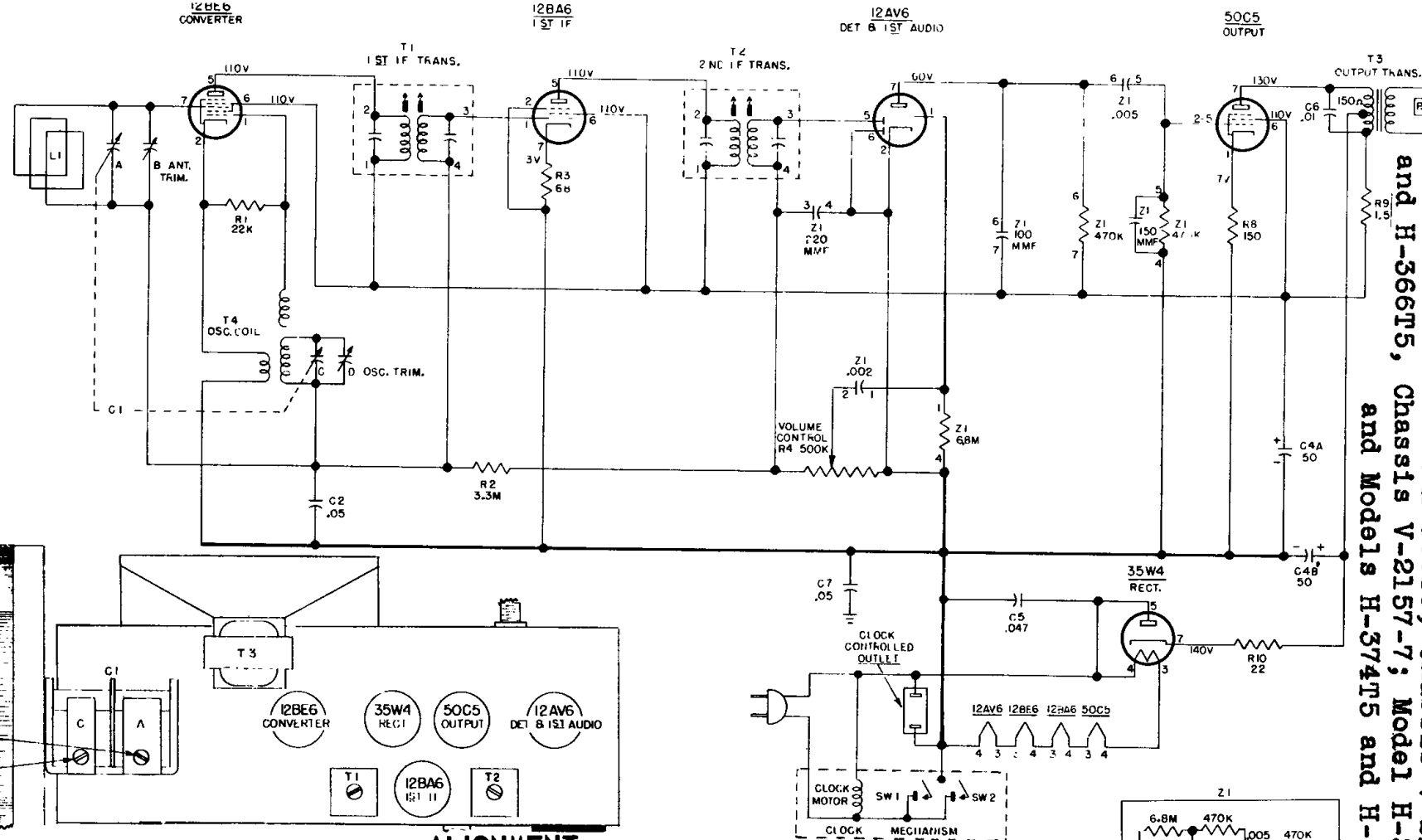


Westinghouse Electric Corporation

MODELS H-355T5 AND H-356T5

CHASSIS V-2157-5

Additional similar sets with and without clock are:
Models H-359T5 and H-360T5, Chassis V-2157-6; Models H-365T5
and H-366T5, Chassis V-2157-7; Model H-367T5, Chassis V-2157-8;
and Models H-374T5 and H-375T5, Chassis V-2157-9.



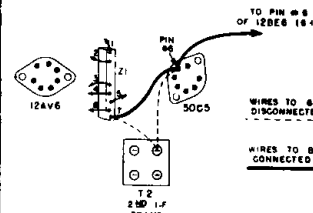
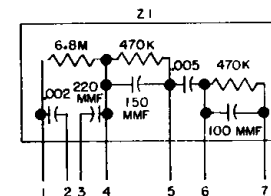
ALIGNMENT

Make certain that the dial pointer is correctly positioned.

While making the following adjustments, keep the volume control set for maximum output and the signal generator output attenuated to avoid AVC action.

Step	Connect Signal Generator to —	Signal Generator Frequency	Radio Dial	Adjust for Maximum Output —
1.	Stator of ant. tuning capacitor (A) through a 200 mmf capacitor	455 kc.	Minimum capacity	Top and bottom slugs of T2 and T1 in order given*
2.	Same as step 1	1615 kc.	Minimum capacity	Oscillator trimmer (D)
3.	Radiated signal	1400 kc.	1400 kc.	Antenna trimmer (B)

*It is recommended that a fiber aligning tool that snugly fits the slot in the powdered iron core be used to prevent chipping of the slot.



BOTTOM VIEW OF V-2157-5 CHASSIS SHOWING CHANGE TO ELIMINATE "MOTORBOATING"

NOTES:
1. ALL VOLTAGES MEASURED FROM COMMON NEGATIVE USING A 20,000 OHM / VOLT METER.
2. ALL CAPACITANCE VALUES IN MFD. AND ALL RESISTANCE VALUES IN OHMS, UNLESS OTHERWISE SPECIFIED.