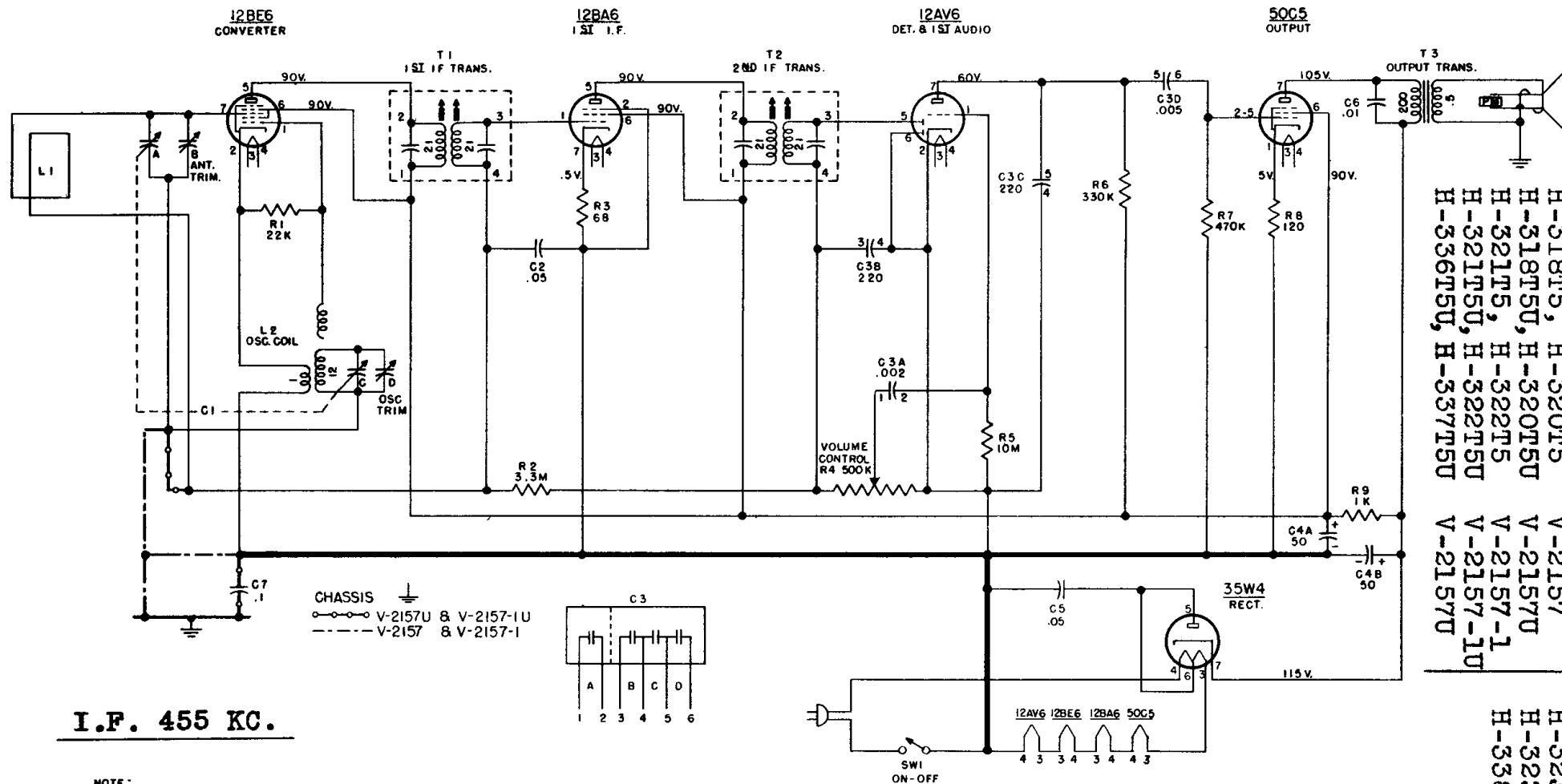


# Westinghouse

Models listed at left below correspond exactly to the circuit on this page.

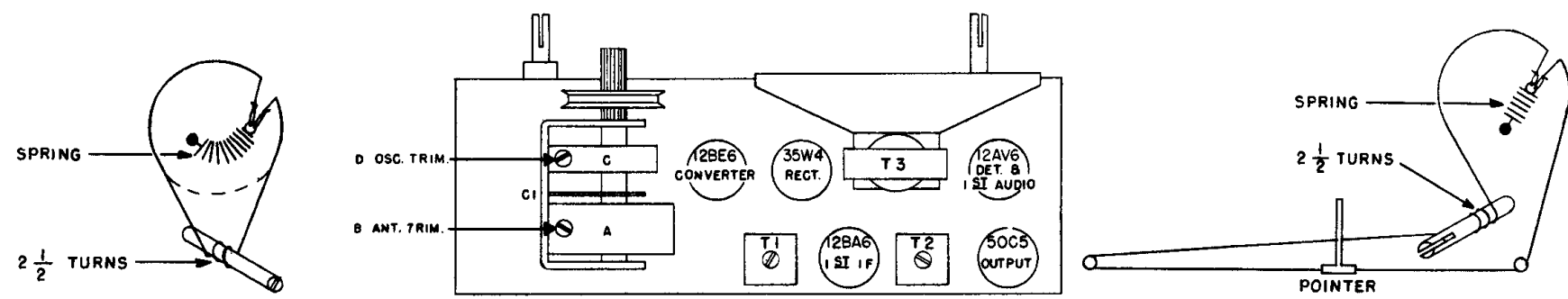
| Models             | Chassis   |
|--------------------|-----------|
| H-318T5, H-320T5   | V-2157    |
| H-318T5U, H-320T5U | V-2157U   |
| H-321T5, H-322T5   | V-2157-1  |
| H-321T5U, H-322T5U | V-2157-1U |
| H-336T5U, H-337T5U | V-2157U   |

Similar models are listed below:  
H-323T5, Chassis V-2157-2,  
H-323T5U, Chassis V-2157-2U,  
H-338T5U, H-341T5U, V-2157-4U.



**I.F. 455 KC.**

NOTE:  
1. ALL VOLTAGES MEASURED FROM CHASSIS GROUND (V-2157 & V-2157-1U ONLY) OR COMMON NEGATIVE (V-2157U & V-2157-1U ONLY) USING A 20,000 OHM/VOLT METER.  
LINE VOLTAGE SET AT 117 V.A.C. READINGS SHOULD BE AS SHOWN  $\pm$  20 PER CENT.



DIAL DRIVE AND CHASSIS LAYOUT  
FOR V-2157 AND V-2157U CHASSIS

DIAL DRIVE  
FOR V-2157-1 AND V-2157-1U CHASSIS