

Chassis V-2394-1, Models H-659P4, H-660P4

CHASSIS REMOVAL (See figure 1)

1. Press in the two cabinet release buttons on either side of the receiver case. Open the case to expose the chassis and batteries.
2. Unsnap the battery cable assemblies from the "A" and "B" batteries.
3. Remove the two self-tapping screws securing the AC receptacle.
4. Remove the two self-tapping screws securing the chassis bracket to the top of the case.
5. Carefully slide the chassis out from the receiver case. The on-off-volume control knob is captivated and thus remains in the case as the control shaft is pulled off the knob.

When servicing with the receiver connected to the AC power line use an isolation transformer between the receiver and the AC line. To replace the chassis reverse the above procedure. Be careful to correctly seat the chassis in the cabinet mounting grooves.

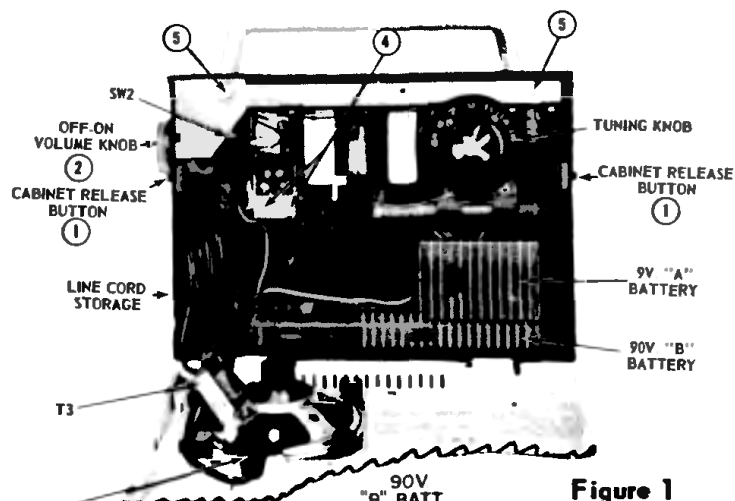
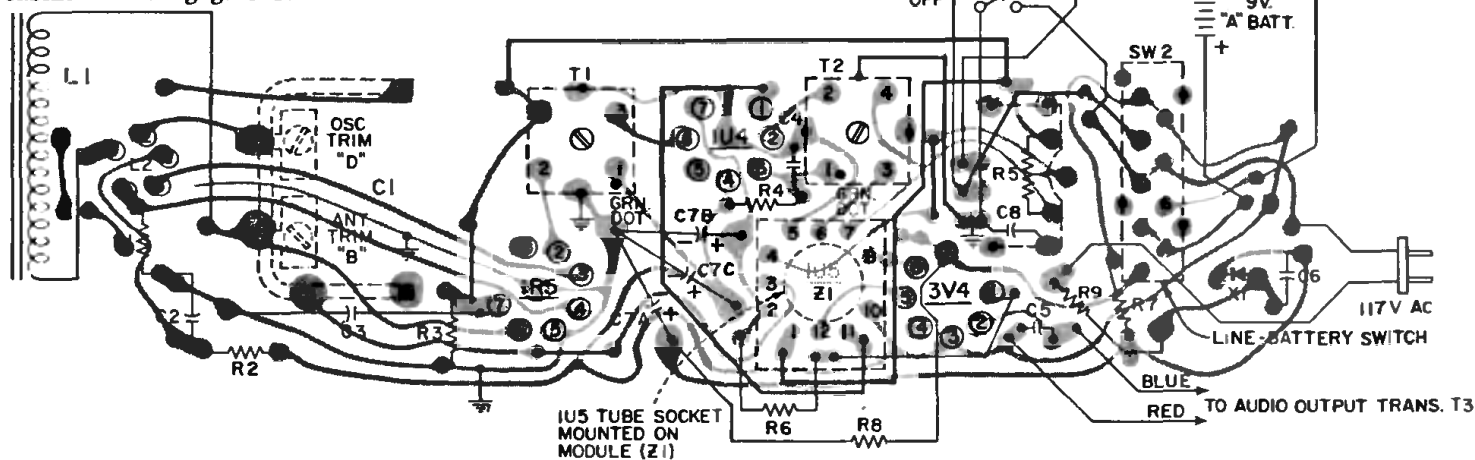
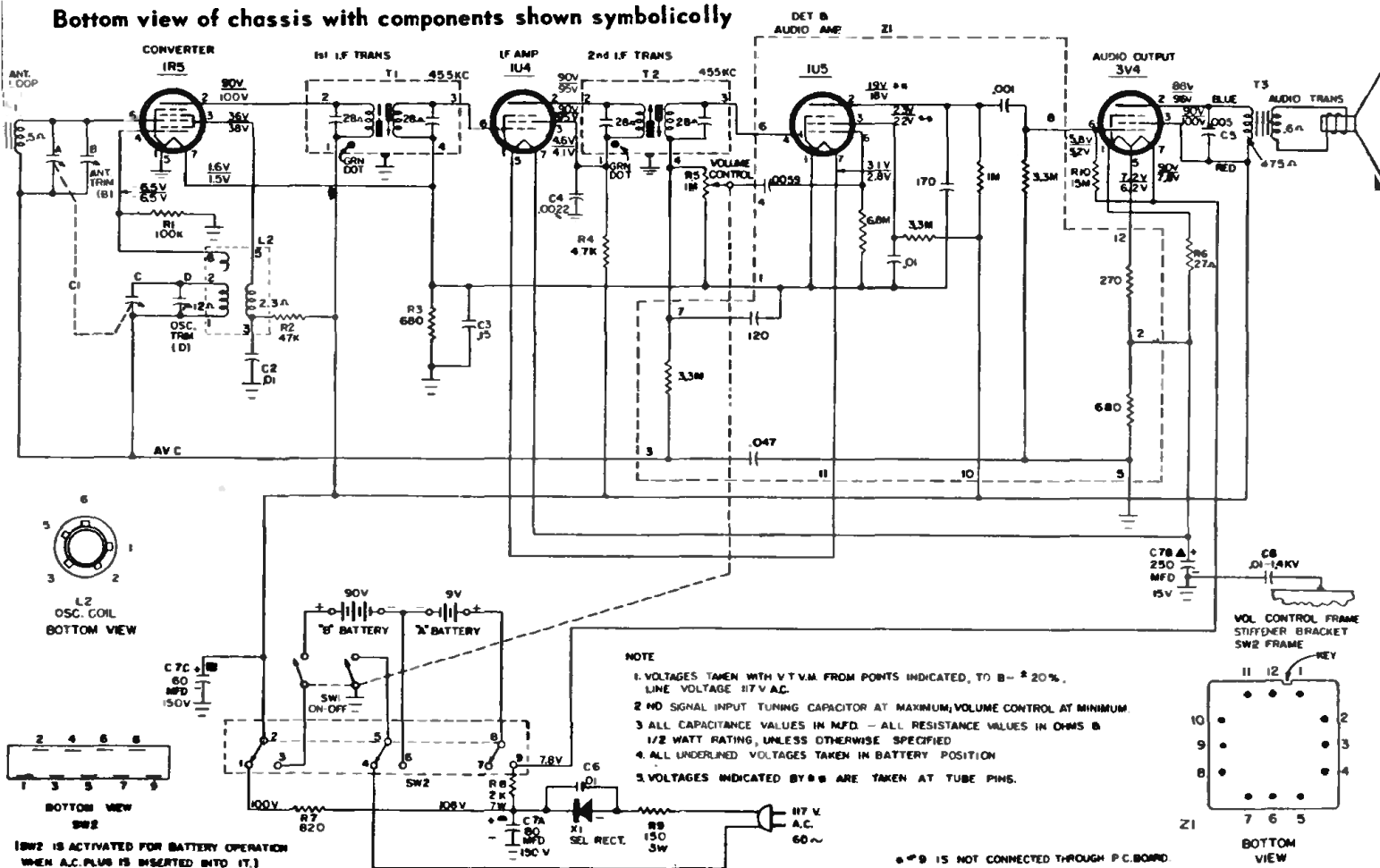


Figure 1



Bottom view of chassis with components shown symbolically

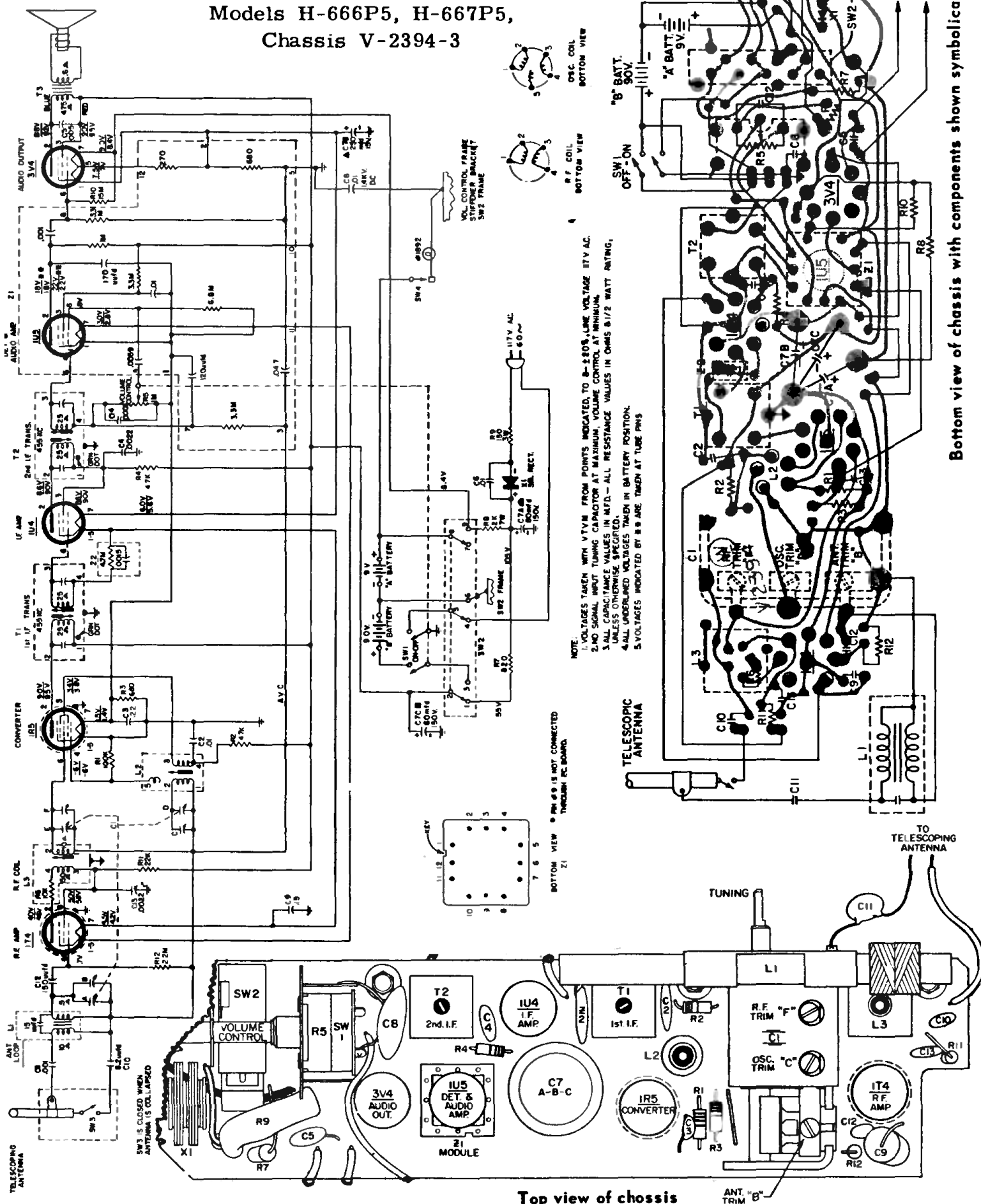




Models H-662P4, H-663P4, H-664P4,
Chassis V-2394-2

Westinghouse

**Models H-666P5, H-667P5,
Chassis V-2394-3**



Top view of chossis

Bottom view of chassis with components shown symbolically