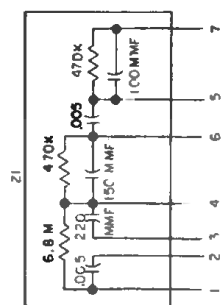
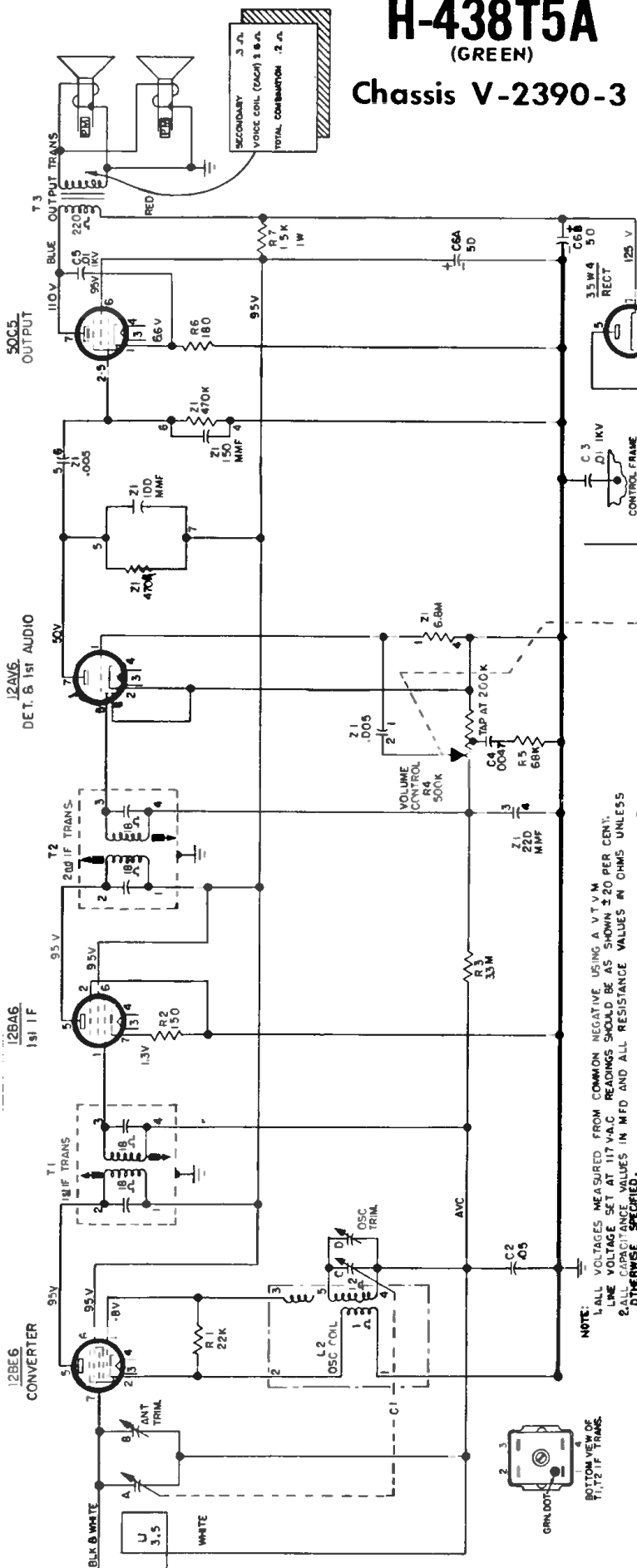


Westinghouse MODELS H-435T5A, H-437T5A, (IVORY) (TAN)

(TAN)

H-438T5A
(GREEN)
Chassis V-2390-3



PRINTED BOARD REMOVAL

1. Remove the knobs from front of cabinet.
2. Remove the three screws from the back cover. Remove the back cover, being careful not to strain the antenna leads.
3. Remove the two screws from bottom of cabinet.
4. From the inside of the cabinet remove the two screws securing the speaker bracket assembly to the cabinet front. One screw is located beside the tuning shaft. The other screw is next to the volume control.
5. From inside the cabinet remove the screw securing the retaining bracket to the cabinet front (located between the two speakers).
6. Carefully slide the printed circuit board out from the cabinet. Use a conventional TV AC interlock line cord to power the radio while servicing. *It is recommended that the chassis be isolated from the power line by an isolation transformer during all servicing.*

