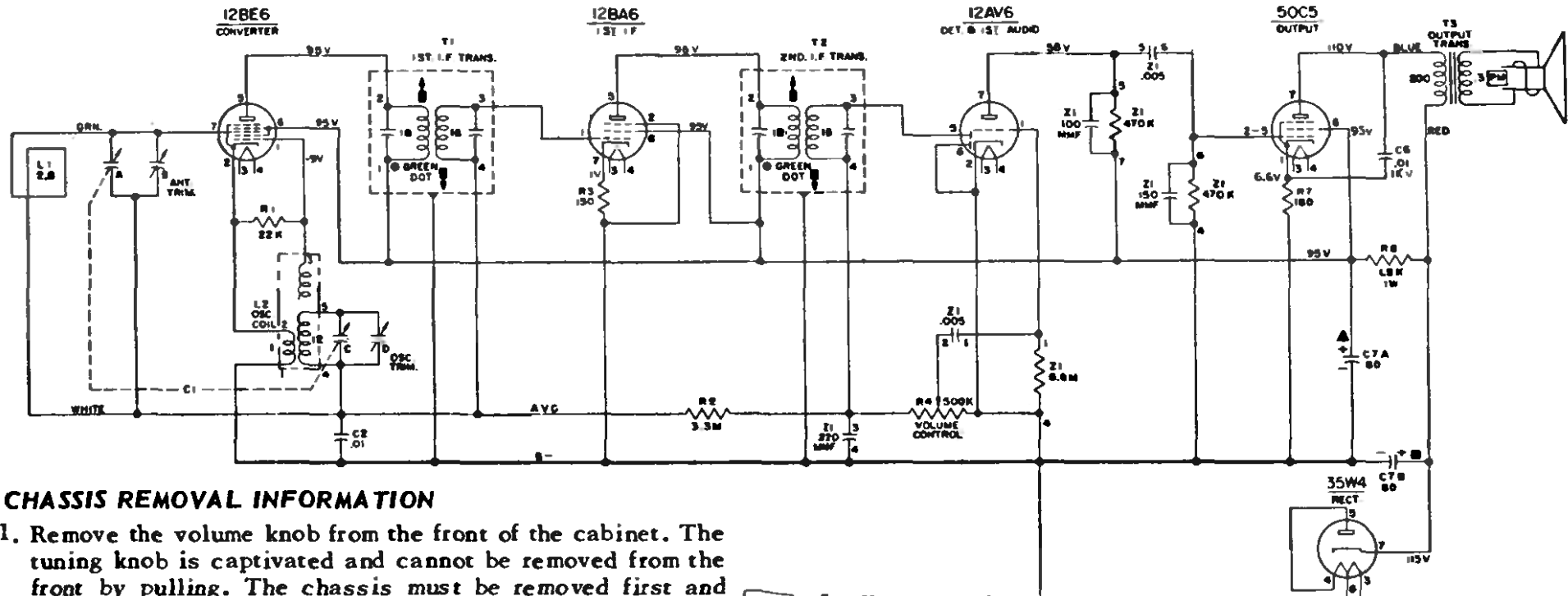


# Westinghouse

Model H-816L5, Chassis V-2259-7,  
Model H-803T5, Chassis V-2259-8,  
is the same except for clock circuit.

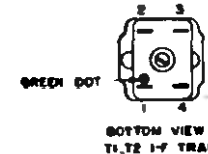
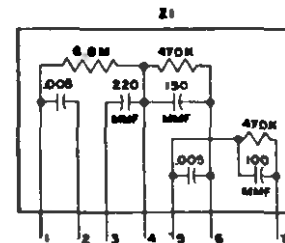
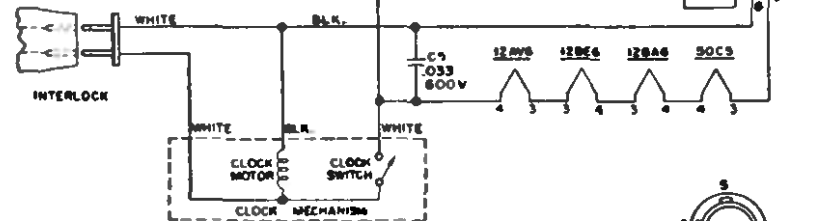


## CHASSIS REMOVAL INFORMATION

1. Remove the volume knob from the front of the cabinet. The tuning knob is captivated and cannot be removed from the front by pulling. The chassis must be removed first and then the lock washer taken off the knob shank.
2. Remove the back cover from the cabinet.
3. Remove the self-tapping screw securing the tuning capacitor bracket to the front of the cabinet.
4. Unloosen the chicken bands securing the clock AC and audio output transformer wires and then slide the chassis out from the rear of the cabinet for servicing.
5. Use a conventional cheater cord or a TV AC interlock line cord to power the radio while servicing.

## CLOCK REMOVAL

1. Remove the clock control knob from the front of the cabinet.
2. Remove the back cover from the cabinet.
3. Unsolder the leads to the clock.
4. Remove the two screws securing the clock to the cabinet and remove the clock. Use the reverse procedure to install the replacement clock.



## NOTES:

1. ALL VOLTAGES MEASURED FROM COMMON NEGATIVE USING A VTVM AND NO SIGNAL INPUT. LINE VOLTAGE SET AT 117V A.C. READINGS SHOULD BE AS SHOWN  $\pm 20$  PER CENT.
2. ALL CAPACITANCE VALUES IN MFD. AND ALL RESISTANCE VALUES IN OHMS UNLESS OTHERWISE SPECIFIED.