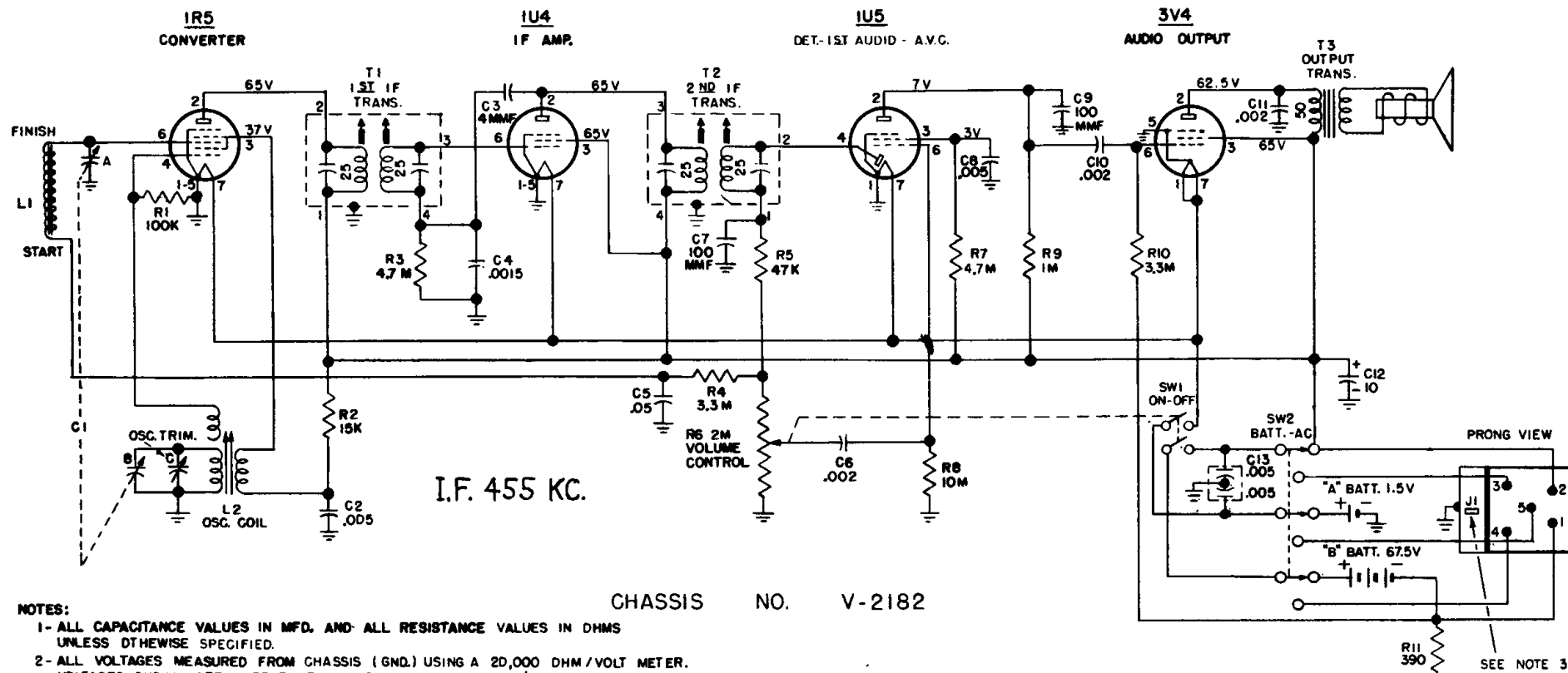


Westinghouse Electric Corporation,

Models H-372P4, H-373P4, H-376P4, Chassis V-2182-1

MODEL H-377 AC POWER SUPPLY



NOTES:

- 1- ALL CAPACITANCE VALUES IN MFD. AND ALL RESISTANCE VALUES IN OHMS UNLESS OTHERWISE SPECIFIED.
- 2- ALL VOLTAGES MEASURED FROM CHASSIS (GND.) USING A 20,000 OHM / VOLT METER. VOLTAGES SHOWN ARE BATTERY READINGS AND SHOULD BE ± 20 PER CENT. AUXILIARY POWER SUPPLY WILL INCREASE VOLTAGE READINGS APPROX. 20% FI
- 3- WHEN AUXILIARY POWER SUPPLY (H-377) IS USED, PLUGGING P51 INTO J1 ACTUATES SW2 BATTERY-AC SWITCH.

FIG. 1 - SCHEMATIC DIAGRAM OF V-2182-1 CHASSIS AND
H-377 AC POWER SUPPLY

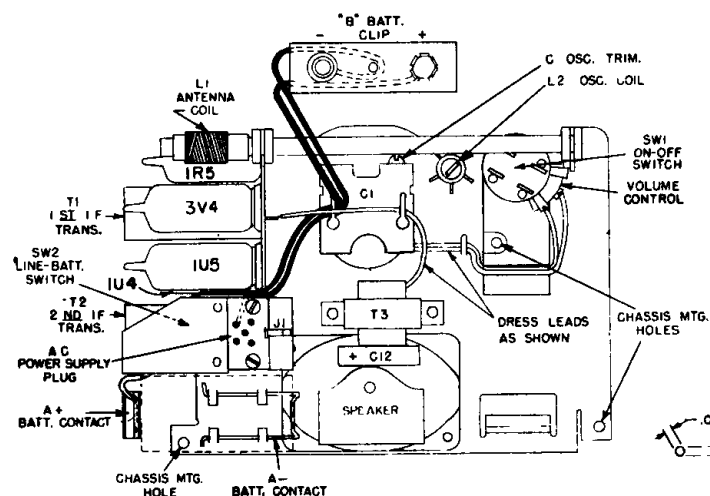


FIG. 2 - REAR VIEW OF
V-2182-1 CHASSIS

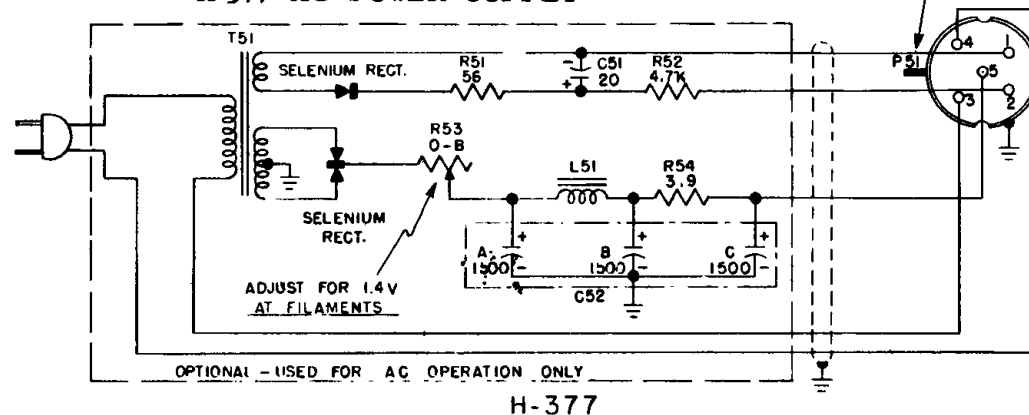


FIG. 3 — TOOL REQUIRED
FOR IF ALIGNMENT

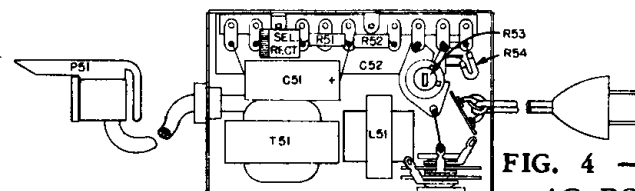


FIG. 4 — MODEL H-377
AC POWER SUPPLY