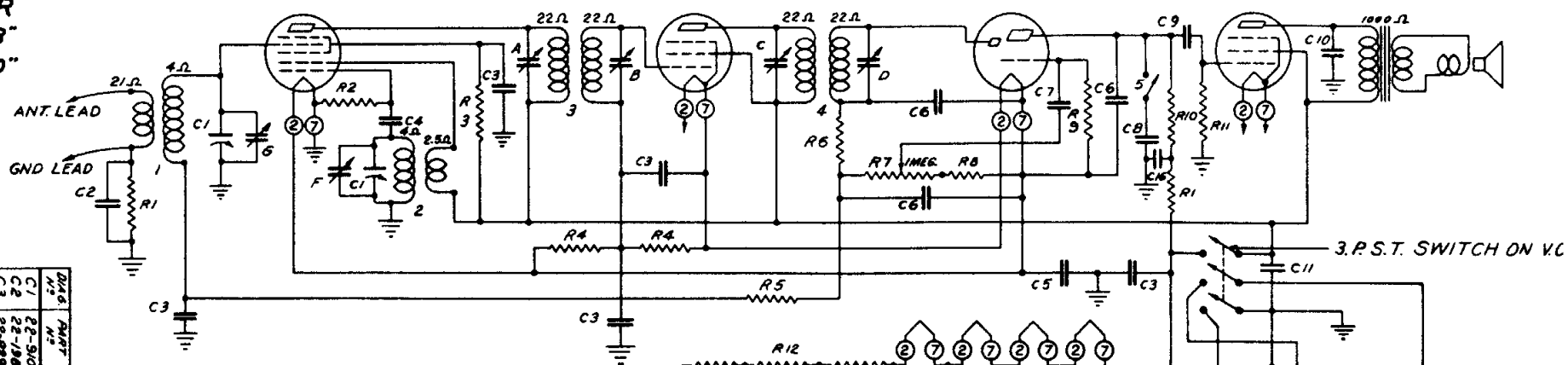
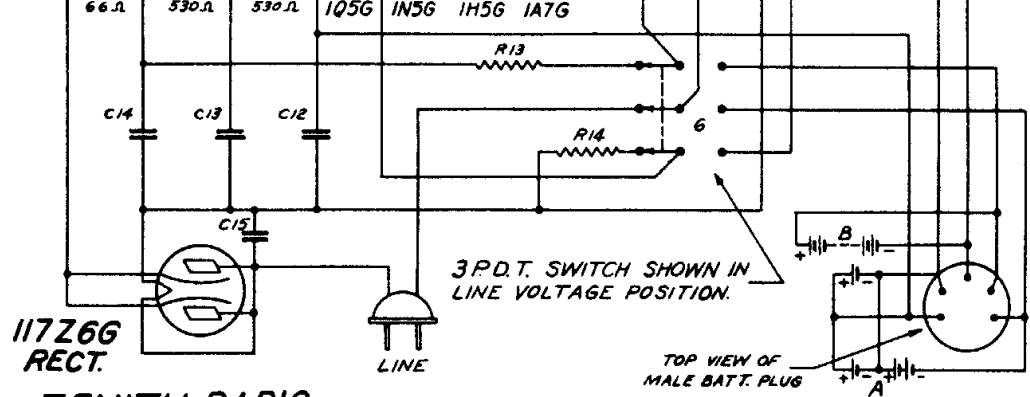
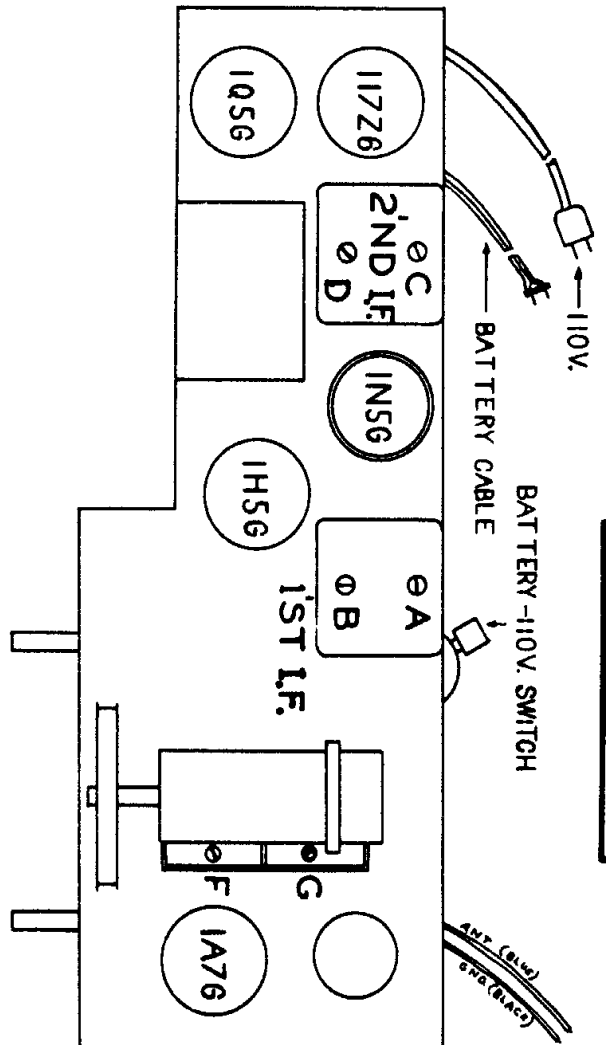


**MODEL SPEAKER**  
**5G438 49-332 8"**  
**5G467 49-333 10"**

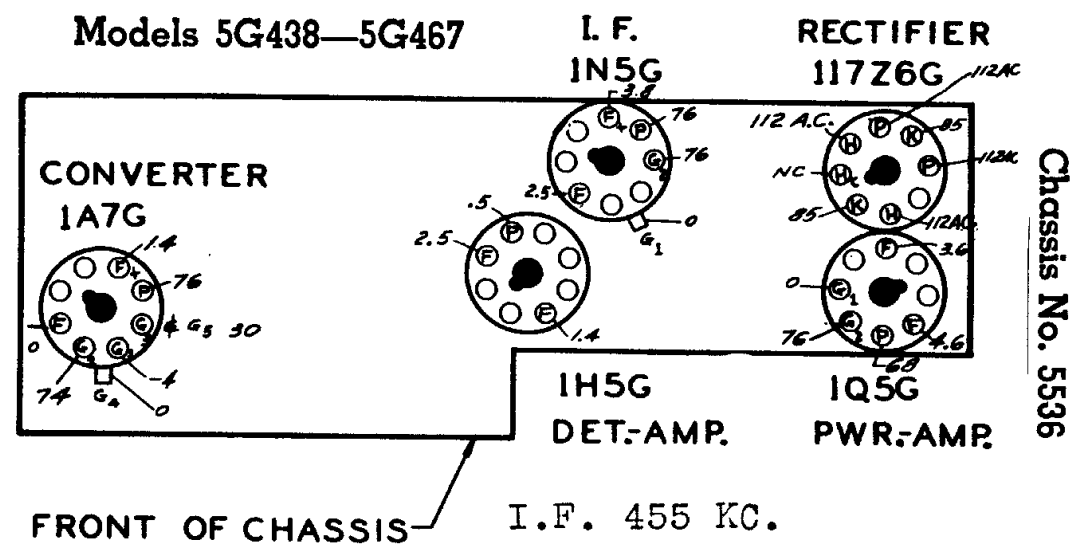
**1A7G CONVERTER**      **IN5G I.F.**      **1H5G DET. AMP.**      **1Q5G PWR. AMP.**      **SPEAKER**



DWG. NO.	PART NO.	DESCRIPTION	DWG. NO.	PART NO.	DESCRIPTION	DWG. NO.	PART NO.	DESCRIPTION
C1	22-940	TWO GANG VARIABLE	R1	63-587	470 M OHM	1	20-208	ANTENNA COIL
C2	22-196	.01 MFD.	R2	63-652	150 M OHM	2	5-6381	OSC. COIL ASSEMBLY
C3	22-829	.05 MFD.	R3	63-713	47 M OHM	3	95-593	1ST I.F. TRANS.
C4	22-182	.00025 MFD.	R4	63-296	220 M OHM	4	95-594	2ND I.F. TRANS.
C5	22-350	.25 MFD.	R5	63-669	3.9 MEG OHM	5	85-187	TONE CONTROL SWITCH
C6	22-165	.0001 MFD.	R6	63-593	47 M OHM	6	85-198	POWER SWITCH
C7	22-885	.01 MFD.	R7	63-583	1000 OHM			
C8	22-887	TONE CONTROL CAPAC.	R8	63-583	1000 OHM			
C9	22-843	.01 MFD.	R9	63-604	10 MEG OHM			
C10	22-448	.004 MFD.	R10	63-871	1 MEG OHM			
C11	22-928	40 MFD. ELECTROLYTIC	R11	63-600	22 MEG OHM			
C12	22-928	20 MFD.	R12	63-1041	3 SECTION CAND OHM			
C13	22-879	50 MFD.	R13	63-605	1000 OHM			
C14	22-869	.05 MFD.	R14	63-1012	90 OHM WIREWOUND			
C15	22-138	.2 MFD.						



**ZENITH RADIO**  
**Models 5G438—5G467**



**FRONT OF CHASSIS**      **I.F. 455 KC.**

**Socket Voltages**

**Chassis No. 5536**