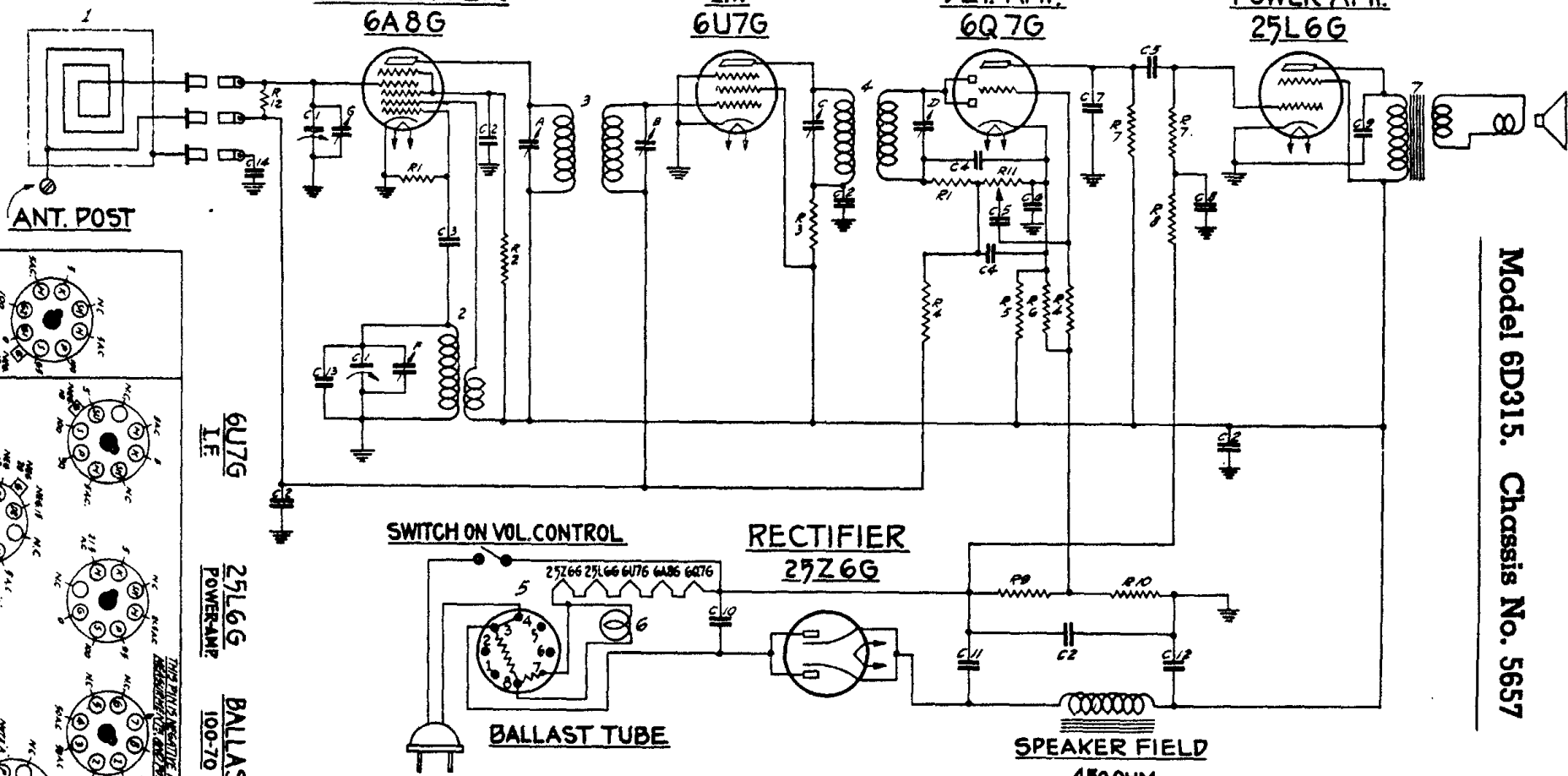


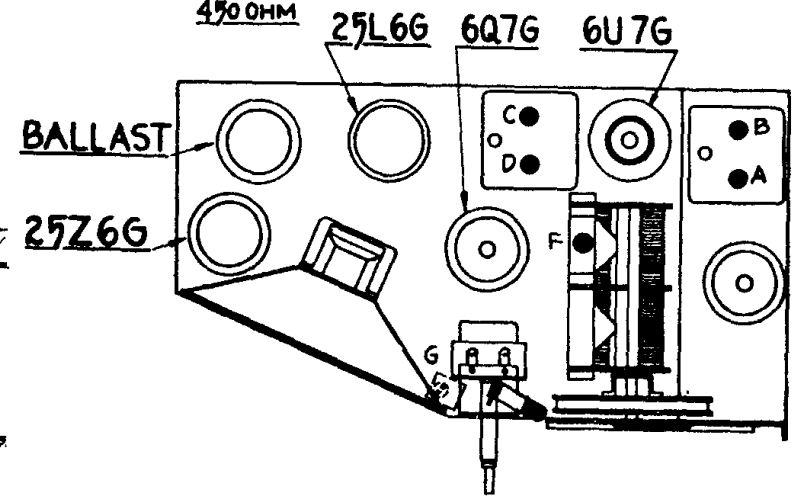
Model 6D315. Chassis No. 5657

CONVERTER 6A8G **I.F. 6U7G** **DET.-AMP 6Q7G** **POWER-AMP 25L6G**



I.F. FREQUENCY - 455 K.C.
6-TUBE SUPERHETERODYNE
CHASSIS NO. 5657 - A.C. D.C.

ZENITH RADIO CORPORATION



Location of tubes and trimmers

ANT. POST

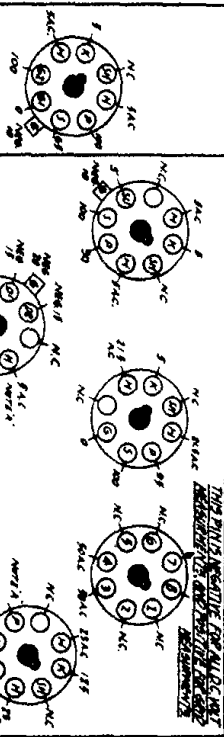
6U7G
I.F.
25L6G
POWER-AMP
BALAST
100-70

SPEAKER FIELD
470 OHM

SWITCH ON VOL. CONTROL

RECTIFIER
25Z6G

BALAST TUBE



DIAG. NO.	PART NO.	DESCRIPTION	DIAG. NO.	PART NO.	DESCRIPTION	DIAG. NO.	PART NO.	DESCRIPTION
C-1	22-801	TWO GANG VARIABLE	R-1	63-593	47 MOHM	5	100-70	BALAST TUBE
C-2	22-250	.05 MFD.	R-2	63-643	18 MOHM	6	100-36	PILOT LIGHT 25A-6.3V.
C-3	22-182	.00025 MFD.	R-3	63-693	100 OHM	7		SPEAKER TRANS.
C-4	22-162	.0001 MFD.	R-4	63-271	1 MEG OHM			
C-5	22-196	.01 MFD.	R-5	63-681	55 MOHM			
C-6	22-185	.01 MFD.	R-6	63-693	680 OHM			
C-7	22-147	.0005 MFD.	R-7	63-286	250 MOHM			
C-8	22-327	.02 MFD.	R-8	63-595	100 MOHM			
C-9	22-730	.04 MFD.	R-9	63-557	60 OHM WIREWOUND			
C-10	22-439	.02 MFD.	R-10	63-956	50 OHM			
C-11	22-681	40 MFD. ELECTROLYTIC	R-11	63-1006	500 MOHM VOL. CONTROL			
C-12	22-680	16 MFD.	R-12	63-466	1 MEG OHM			
C-13	22-802	.30 MFD.						
C-14	22-319	.005 MFD.						
			1	5-6780	LOOP ANT. ASSEM.			
			2	5-6741	OSC. COIL ASSEM.			
			3	98-589	1ST. I.F. TRANS.			
			4	98-591	2ND. I.F. TRANS.			

Model 6D315
CHASSIS No. 5657

FRONT OF CHASSIS
6Q7G
DET.-AMP