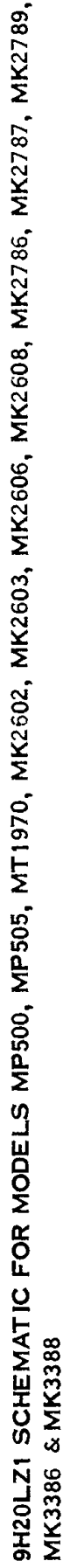
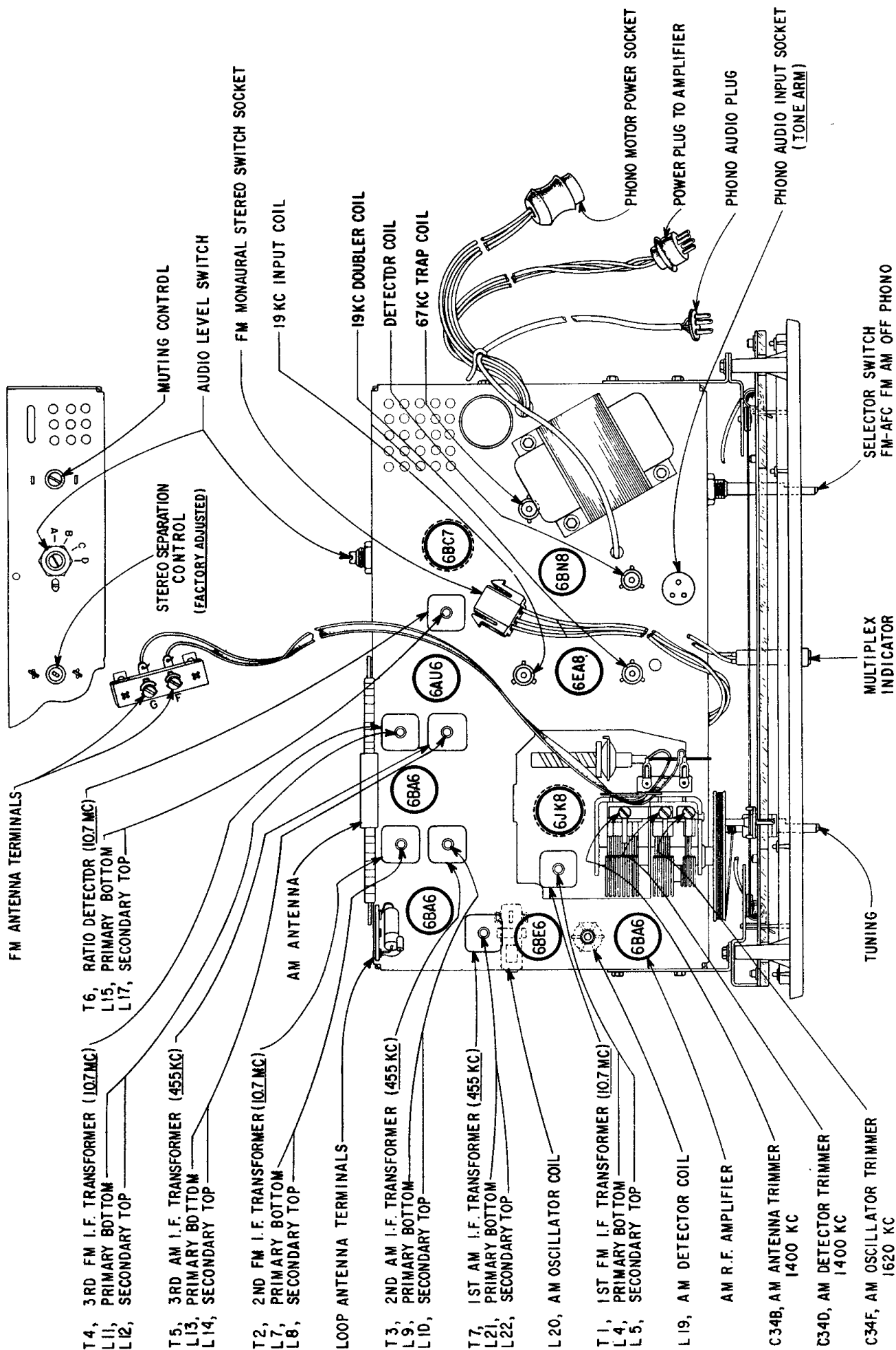


Chassis 9H20LZ1, used in Models MP500, MP505, MT1970, MK2602, MK2603, MK2606, MK2608, MK2786, MK2787, MK2789, MK3386, MK3388.



Chassis 9H20LZ1, used in Models MP500, MP505, MT1970, MK2602, MK2603, MK2606, MK2608, MK2786, MK2787, MK2789, MK3386, MK3388.



9H20LZ1 TUBE TRIMMER LAYOUT FOR MODELS MP500, MP505, MT1970, MK2602, MK2603, MK2606, MK2608, MK2786, MK2787, MK2789, MK3386 & MK3388