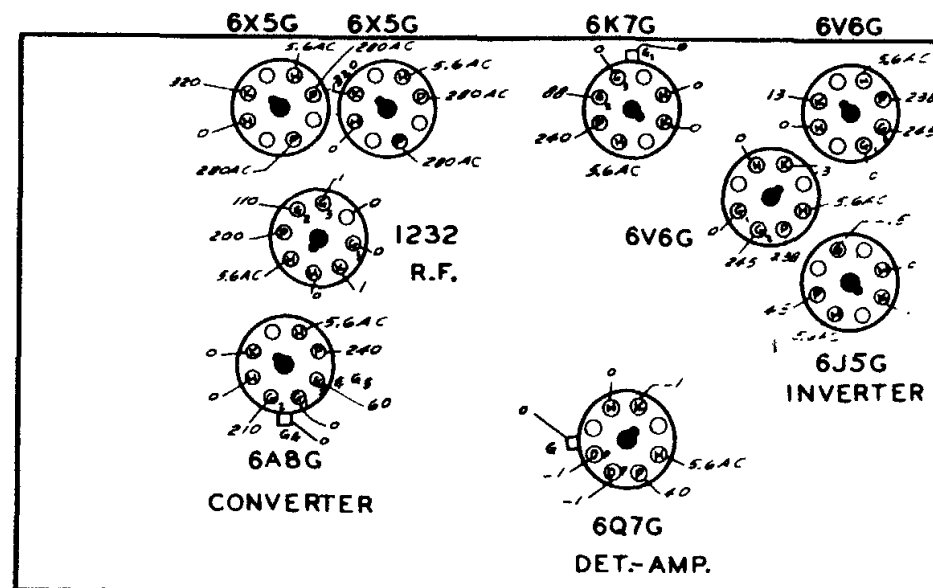


QWG NO.	PART NO.	DESCRIPTION	QWG NO.	PART NO.	DESCRIPTION	QWG NO.	PART NO.	DESCRIPTION
C1	22-327	TWO BAND VARIABLE	C22	22-368	.002 MFD.	R15	63-1058	22 M OHM
C2	22-829	.05 MFD.	C24	22-930	DUAL OSC. PADDER	R17	63-676	27 M OHM
C3	22-829	.05 MFD.	C25	22-868	COMPENSATING COND	R18	63-1068	2-SECTION CANDOHM
C4	22-825	.1 MFD.	C26	22-168	.0001 MFD.	R19	63-1062	10 OHM WIREWOUND
C5	22-147	.0005 MFD.				R20	63-1074	VOLUME CONTROL
C6	22-127	25 MM MFD.	R1	63-529	10M OHM	R21	63-894	60M OHM
C7	22-168	.00025 MFD.	R2	63-674	33 OHM	R22	63-151	15M OHM
C8	22-858	.0005 MFD.	R3	63-1077	18M OHM	R23	63-576	68 OHM
C9	22-171	.05 MFD.	R4	63-587	4700 OHM			
C10	22-229	.005 MFD.	R5	63-535	100M OHM			
C11	22-930	.02 MFD.	R6	63-593	47 M OHM			
C12	22-448	.004 MFD.	R7	63-605	1000 OHM			
C13	22-327	.02 MFD.	R8	63-271	1M60 OHM			
C14	22-954	.00035 MFD.	R9	63-643	18 M OHM			
C15	22-470	.00015 MFD.	R10	63-711	22 M OHM			
C16	22-448	.004 MFD.	R11	63-774	220M OHM			
C17	22-492	.002 MFD.	R12	63-588	2200 OHM			
C18	22-934	20MFD ELECTROLYTIC	R13	63-296	220 M OHM			
C19	22-934	20MFD ELECTROLYTIC	R14	63-657	330 M OHM			
C20	22-827	.1 MFD.	R15	63-648	47 M OHM			
C21	22-525	.005 MFD.						

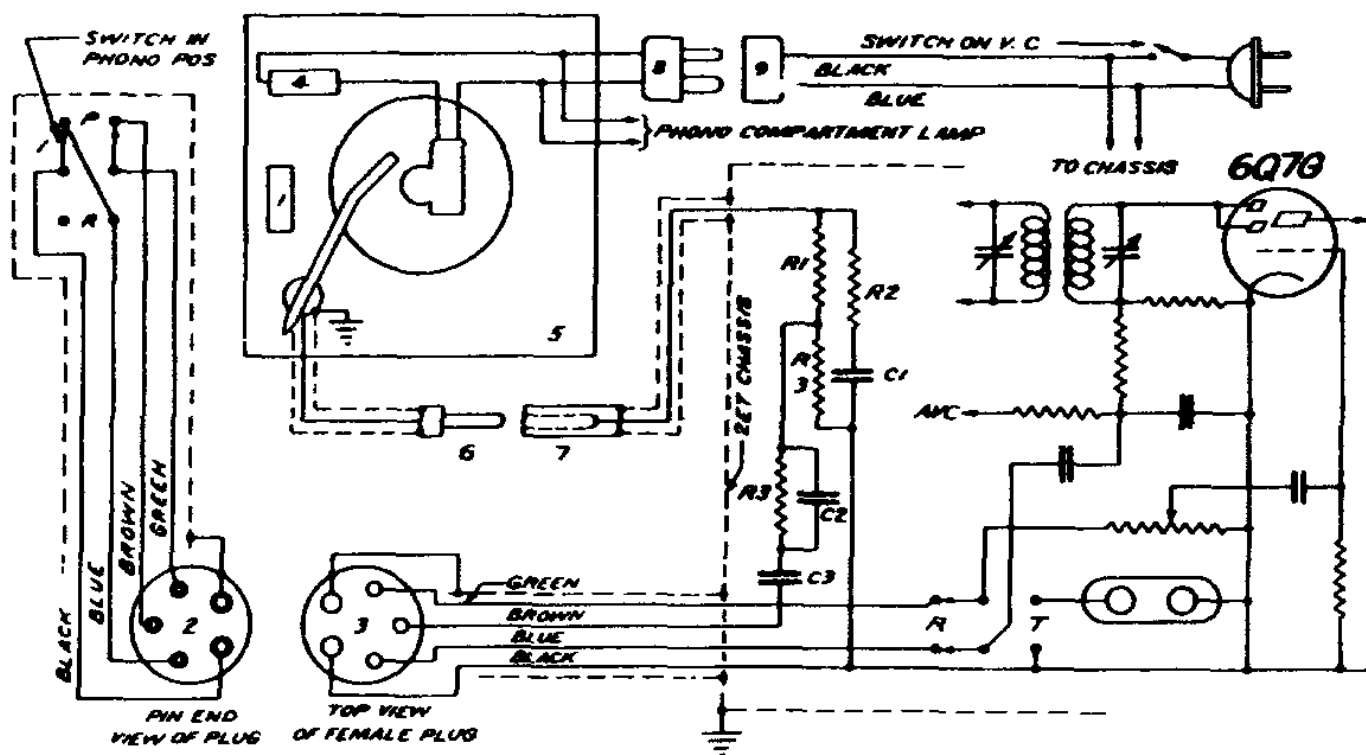
I.F. FREQUENCY 455 KC.
10 TUBE SUPERHETERODYNE
CHASSIS No. 1005 A.C. 3 BAND
ZENITH RADIO CORPORATION

Models 10S443—10S452—10S464—10S470—10S491—10S492



-FRONT OF CHASSIS

Socket Voltages



ZENITH

DWG. NO.	PART NO.	DESCRIPTION
C1	22-319	.005 MFD.
C2	22-954	.00035 MFD.
C3	22-887	.001 MFD.
R1	63-719	470 M OHM
R2	63-649	56 M OHM
R3	63-271	1 MEG OHM
1	37224	PHONO SW. WIRE ASSEMBLY
2	58070	PLUG & WIRE ASSEMBLY
3	85-131	A.C. SWITCH
4	169-36	WEBSTER AUTOMATIC RECORD PLAYER
5	58069	RECEPTACLE & WIRE ASSEM.
6	58068	CHUCKER-93 PLUG WITH P-7002 CAP & LINER
7	58068	PLUG & WIRE ASSEMBLY

PHONO CIRCUIT DATA
MODEL SPEAKER
 10S491 49-356 15"
 10S492 49-352 12"
CHASSIS N°1007