

# Models 7-J-232, 7-J-259 (5711 Chassis)

R.F.  
6S7G

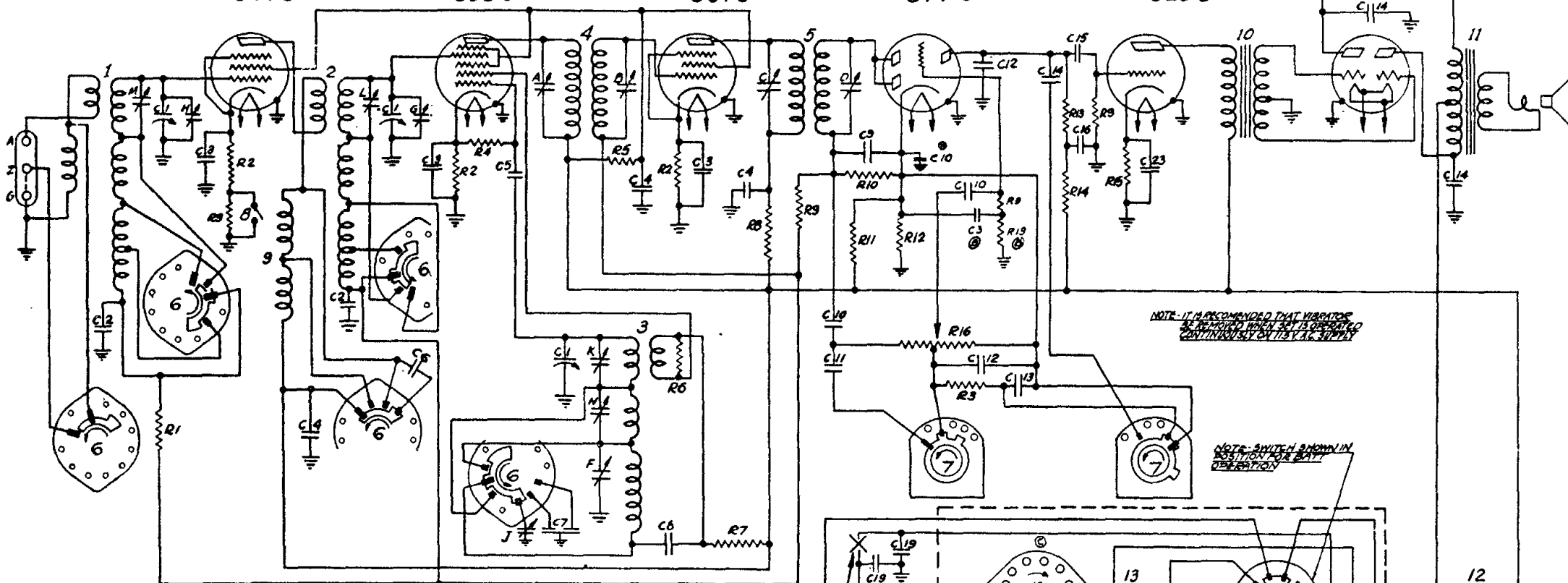
1<sup>ST</sup> DET. Osc.  
6D8G

I.F.  
6S7G

2<sup>ND</sup> DET. A.V.C.  
1<sup>ST</sup> AUDIO  
6T7G

2<sup>ND</sup> AUDIO  
6L5G

POWER  
1J5G

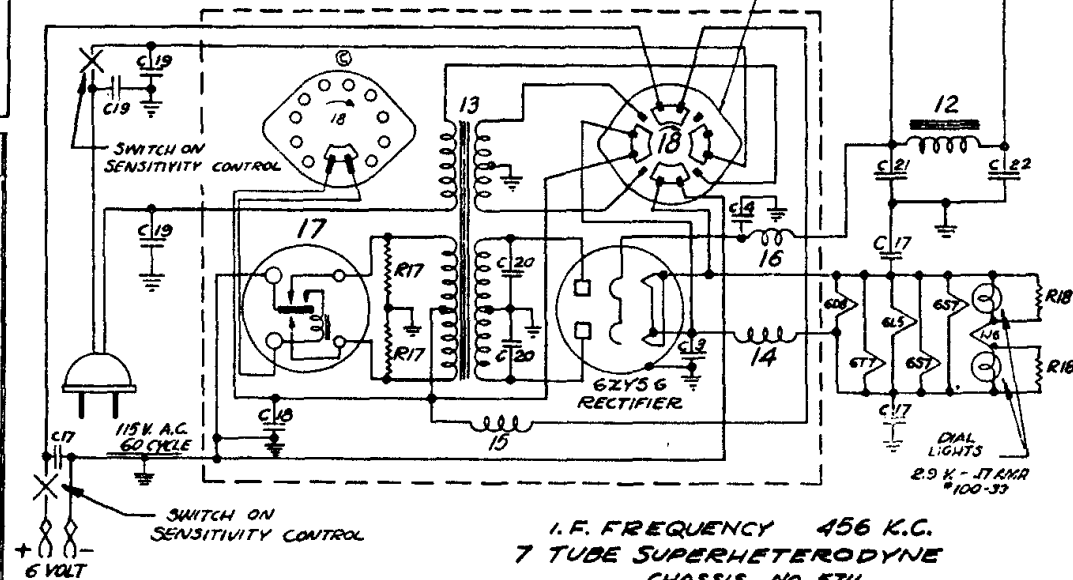


DIAG. NO.	PART NO.	DESCRIPTION
11	95-298	SPEAKER TRANS. (ON BARRETT)
13	95-425	POWER CHOKES
14	5-2778	R.F. CHOKES ASSEMBLY
15	5-3043	R.F. CHOKES ASSEMBLY
16	20-82	R.F. CHOKES
17	190-11	VIBRATOR
18	85-125	POWER SWITCH

DIAG. NO.	PART NO.	DESCRIPTION
C1	22 348	THREE GANG VARIABLE
C2	22 497	.05 MFD.
C3	22 250	.05 MFD.
C4	22 212	.05 MFD.
C5	22 289	50 MMFD.
C6	22 127	25 MMFD.
C7	22 358	DUAL FIXED PADDER
C8	22 358	.002 MFD.
C9	22 162	.0001 MFD.
C10	22 327	.02 MFD.
C11	22 182	.00025 MFD.
C12	22 147	.0005 MFD.
C13	22 229	.005 MFD.
C14	22 432	.002 MFD.
C15	22 188	.02 MFD.
C16	22 170	.1 MFD.
C17	22 350	.25 MFD.
C18	22 193	.5 MFD.
C19	22 435	.02 MFD.
C20	22 574	.02 MFD.
C21	22 577	8 MFD. ELECTROLYTIC 250
C22	22 577	8 MFD. " 250K
C23	22 577	10 MFD. " 25K

R1	63 895	100 M OHM	1/4Wx20
R2	63 632	560 OHM	1/4Wx10
R3	63 593	47 M OHM	1/4Wx20

DIAG. NO.	PART NO.	DESCRIPTION
R4	63-648	47 M OHM 1/4Wx10
R5	63-678	47 M OHM 1/4Wx10
R6	63-589	10 M OHM 1/4Wx20
R7	63-796	10 M OHM 1/2Wx10
R8	63-605	1000 OHM 1/4Wx20
R9	63-271	1 MEG OHM 1/4Wx20
R10	63-658	390 M OHM 1/4Wx10
R11	63-160	100 M OHM 1/2Wx10
R12	63-634	320 OHM 1/4Wx10
R13	63-597	470 M OHM 1/4Wx20
R14	63-656	270 M OHM 1/4Wx10
R15	63-797	2200 OHM 1/4Wx10
R16	63-568	2 MEG OHM VOLUME CONTROL
R17	63-577	100 OHM 1/4Wx20
R18	63-801	21 OHM (WIRED WOUND) 1/2Wx5
R19	63-596	330 M OHM 1/4Wx20
1	5-5017	ANT. COIL & SHIELD ASSEM.
2	5-5018	DET. COIL & SHIELD ASSEM.
3	5-5163	OSC. COIL & SHIELD ASSEM.
4	95-416	1ST. I.F. TRANSFORMER
5	95-417	2ND I.F. TRANSFORMER
6	85-103	BAND SELECTOR SWITCH
7	85-108	TONE CONTROL SWITCH
8	85-117	SENSITIVITY SWITCH
9	20-185	R.F. CHOKES
10	95-446	AUDIO TRANSFORMER



I.F. FREQUENCY 456 K.C.  
7 TUBE SUPERHETERODYNE  
CHASSIS NO. 5711  
6 VOLT D.C. ~ 115 VOLT A.C.  
ZENITH RADIO CORPORATION