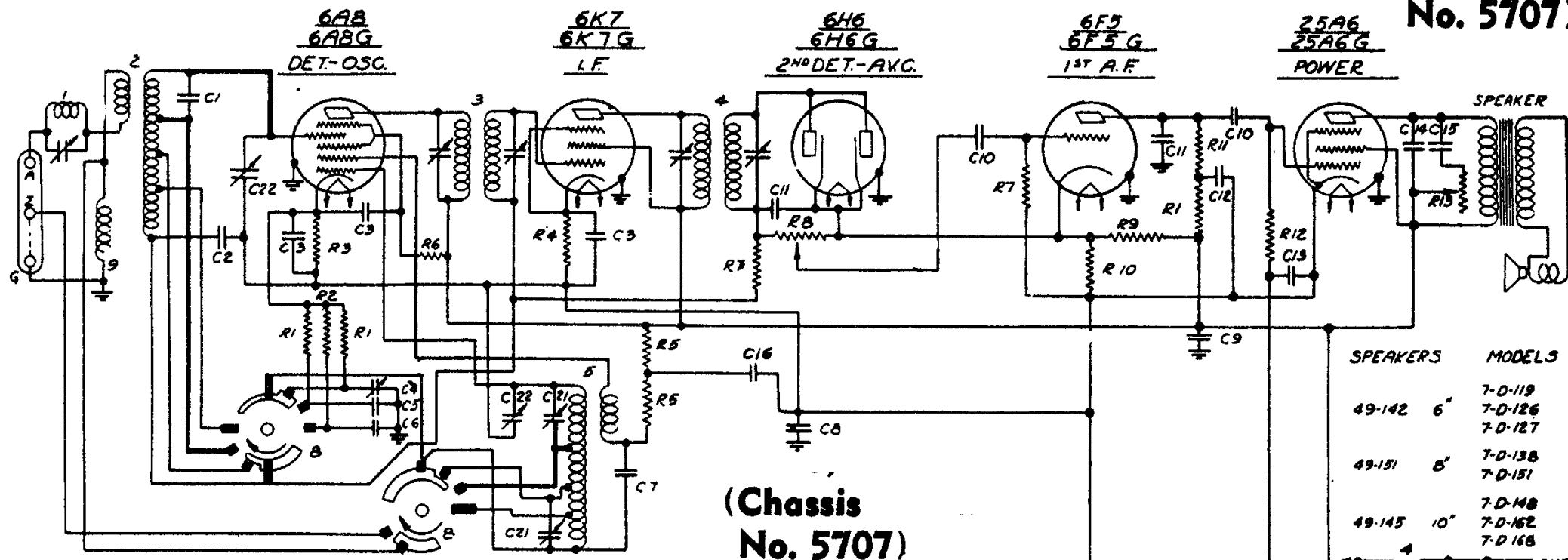


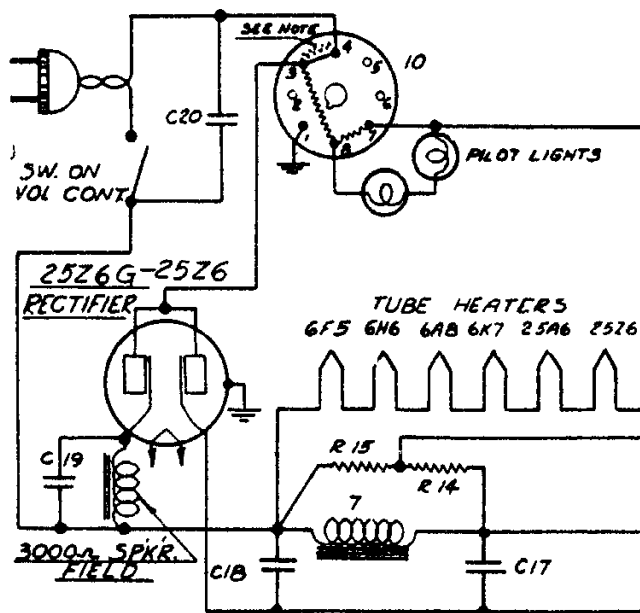
Models 7-D-119, 7-D-126, 7-D-127, 7-D-138, 7-D-151, 7-D-148, 7-D-162, 7-D-168. (Chassis No. 5707)



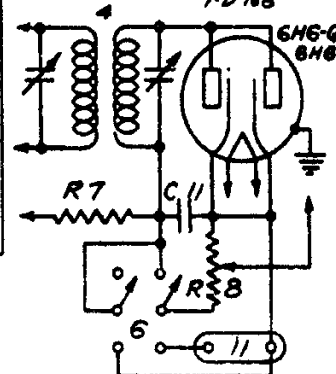
DWG NO	PART NO	DESCRIPTION	DWG NO	PART NO	DESCRIPTION
C1	22-303	5 MMFD	600V	R12	63-250 260M OHMS 1/4W
C2	22-487	05 MFD	400V	R13	63-321 50M.Ω TONE CONT
C3	22-250	05 MFD	200V	R14	63-482 650M OHMS 1/4W
C4	22-208	200-550 MMFD	OSC. PADDER	R15	63-481 400M OHMS 1/4W
C5	22-384	0005 MFD	600V		
C6	22-485	005 MFD	600V		
C7	22-486	002 MFD	600V		
C8	22-350	25 MFD	200V		
C9	22-212	05 MFD	400V		
C10	22-188	02 MFD	400V		
C11	22-162	000 MFD	200V		
C12	22-190	1 MFD	200V		
C13	22-467	2 MFD	200V		
C14	22-229	005 MFD	600V		
C15	22-170	1 MFD	400V		
C16	22-515	4 MFD DRY ELEC	250V		
C17	22-514	8 MFD	250V		
C18	22-514	16 MFD	250V		
C19	22-514	4 MFD	250V		
C20	22-455	01 MFD	1200V		
C21	22-403	2-35MMFD TRIMMER			
C22	22-482	VARIABLE			

R1	63-278	99M OHMS	1/4W
R2	63-280	49M OHMS	1/4W
R3	63-362	100 OHMS	1/4W
R4	63-357	900 OHMS	1/4W
R5	63-361	5M OHMS	1/4W
R6	63-288	19M OHMS	1/4W
R7	63-293	990M OHMS	1/4W
R8	63-320	400M.Ω VOL. CONT.	1/4W
R9	63-442	30M OHMS	1/4W
R10	63-518	550 OHMS	1/4W
R11	63-376	190M OHMS	1/4W

NOTE:
PINS 3 & 4 SHORT
CIRCUITED INTERNALLY
IN "100-30" "100-45"
AND "100-48 ONLY"



SPEAKERS	MODELS
49-142 6"	7-D-119 7-D-126 7-D-127
49-131 8"	7-D-138 7-D-151
49-145 10"	7-D-148 7-D-162 7-D-168



CIRCUIT CHANGES
FOR PHONOGRAPH
I.F. FREQUENCY 456 K.C.
7 TUBE SUPERHETERODYNE
CHASSIS NO 5707 A.C.-D.C.

ZENITH RADIO CORP