

I.F. FREQUENCY 455K.C.

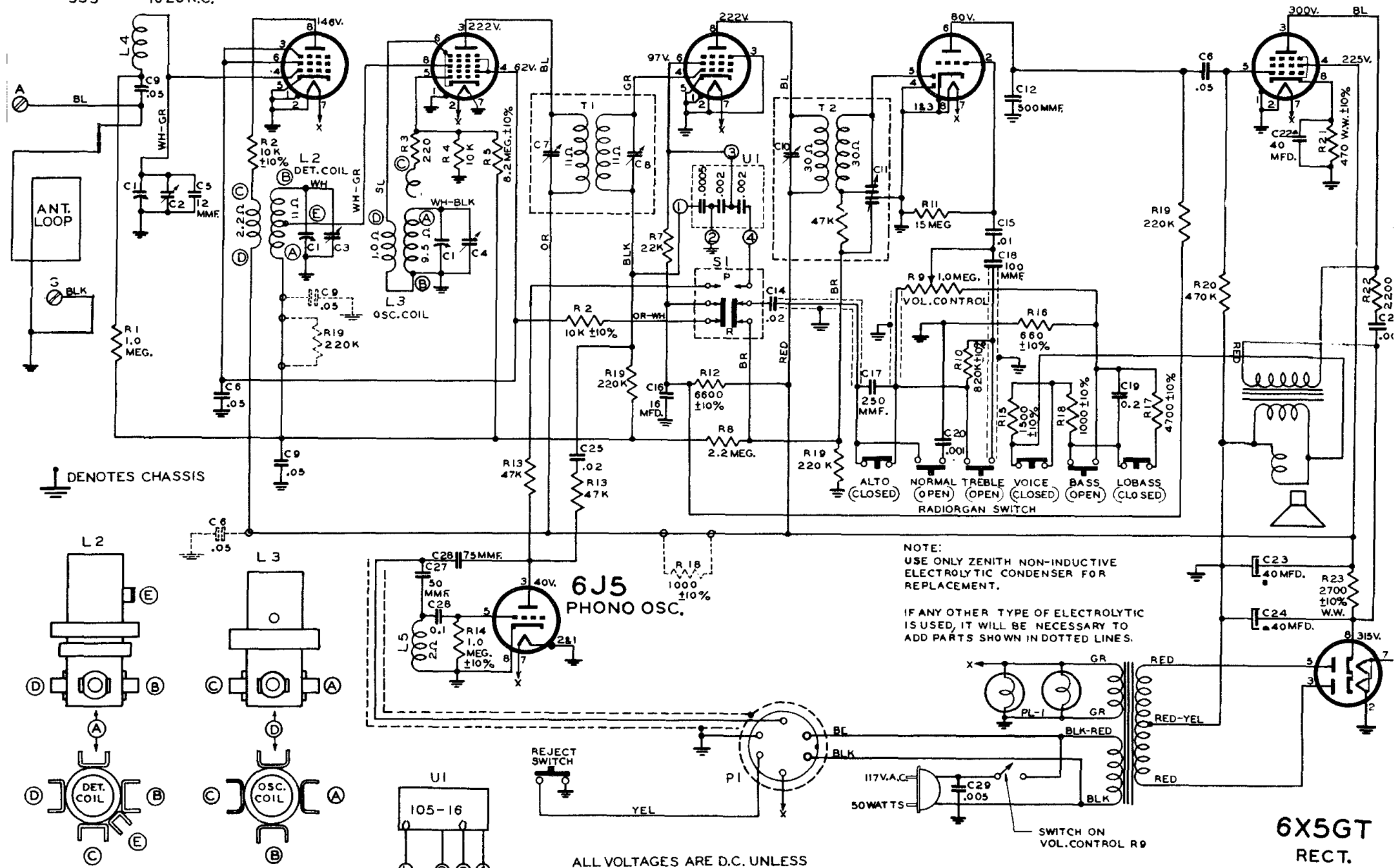
TUNING RANGE  
535 — 1620 K.C.

**6SK7GT** R.F.  
**6SA7GT** CONVERTER

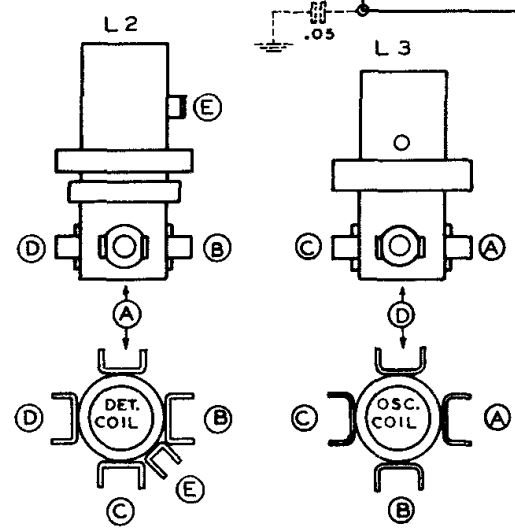
**6SK7** I.F.

**6SQ7GT** DET.-AMP.

**6K6GT** PWR.-AMP.



⏏ DENOTES CHASSIS



ALL VOLTAGES MEASURED FROM COMMON RETURN TO POINTS INDICATED WITH AN A.C., D.C. OR VACUUM TUBE VOLT-METER

ON TRIPLE CAPACITORS LEADS LINE UP ACCORDING TO THE PART NUMBER AS SHOWN.

ALL VOLTAGES ARE D.C. UNLESS OTHERWISE SPECIFIED

ALL RESISTORS  $\pm 20\%$  TOLERANCE UNLESS OTHERWISE SPECIFIED

NOTE:  
USE ONLY ZENITH NON-INDUCTIVE ELECTROLYTIC CONDENSER FOR REPLACEMENT.  
IF ANY OTHER TYPE OF ELECTROLYTIC IS USED, IT WILL BE NECESSARY TO ADD PARTS SHOWN IN DOTTED LINES.

Zenith Radio Corp.

**MODEL 7R887**  
**CHASSIS 7E22**