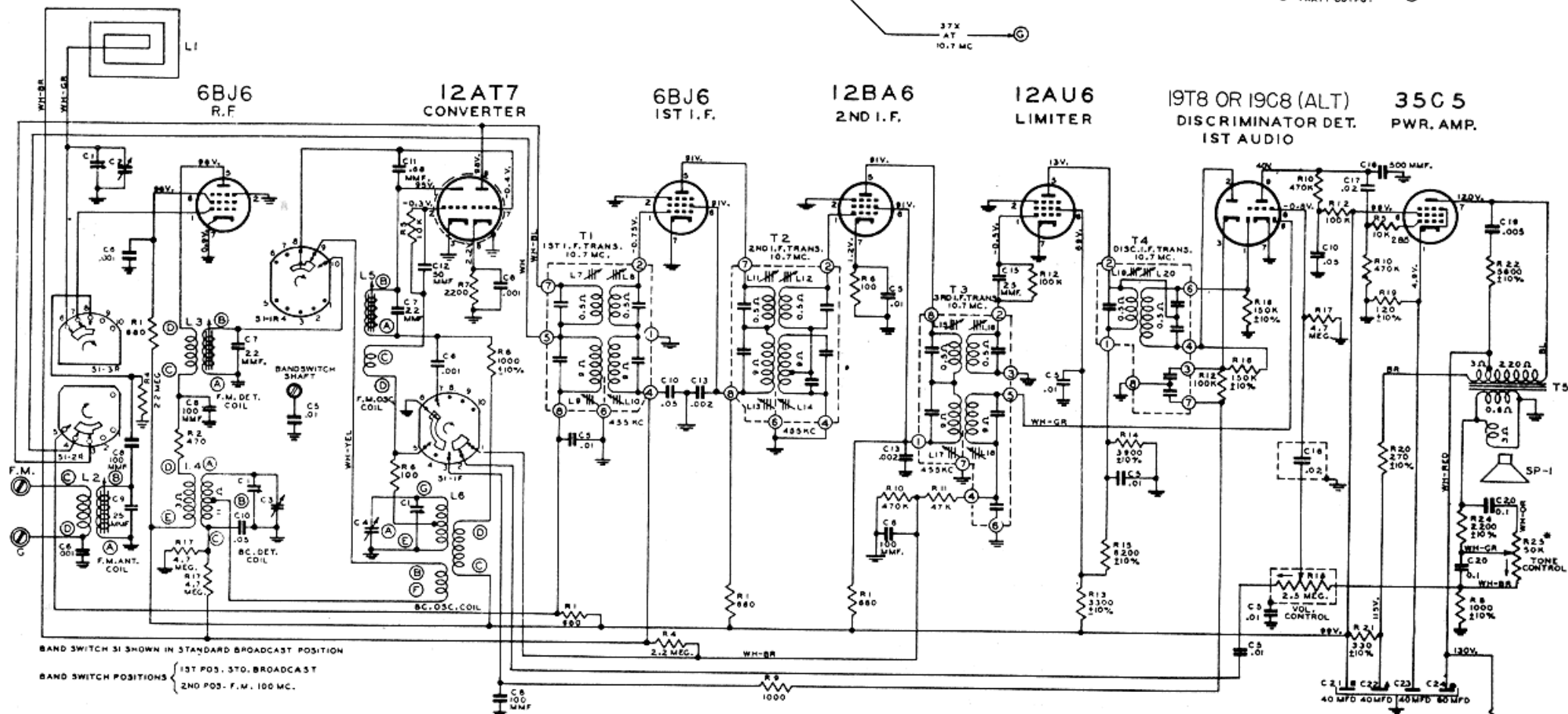
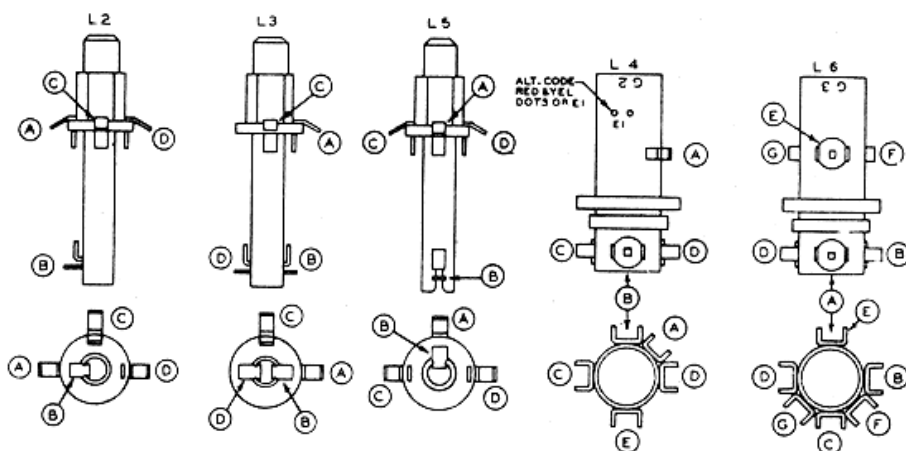


ANT. AM 87K AT 800KC 42 X FROM 800KC TO 433KC 42 X FROM 88MC TO 10.7MC 11.8 AT 433KC 56 X AT 10.7MC 11.8 FROM 433KC TO 450V 40X AT 450V 1WATT OUTPUT



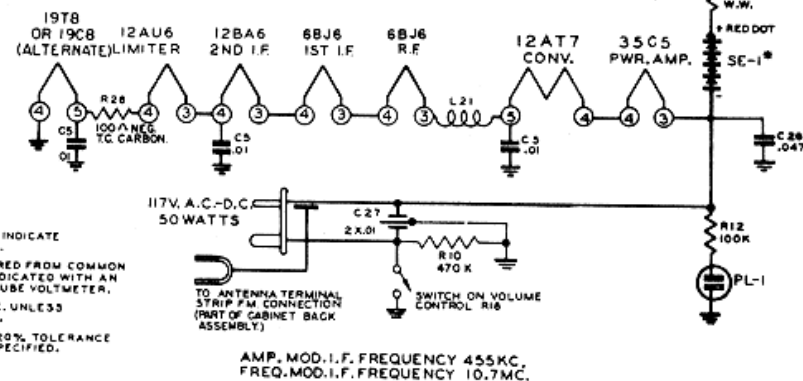
BAND SWITCH S1 SHOWN IN STANDARD BROADCAST POSITION

BAND SWITCH POSITIONS  
13T POS. STD. BROADCAST  
2ND POS. F.M. 100 MC.



ARROW ON CONTROLS INDICATE COUNTERCLOCKWISE ROTATION.  
ALL VOLTAGES MEASURED FROM COMMON RETURN TO POINTS INDICATED WITH AN A.C., D.C. OR VACUUM TUBE VOLTMETER.  
ALL VOLTAGES ARE D.C. UNLESS OTHERWISE SPECIFIED.  
ALL RESISTORS ARE  $\pm 20\%$  TOLERANCE UNLESS OTHERWISE SPECIFIED.

$\perp$  DENOTES CHASSIS



AMP. MOD. I.F. FREQUENCY 455 KC.  
FREQ. MOD. I.F. FREQUENCY 10.7 MC.

TUNING RANGES  
540-1620 KC. STD. BC.  
88-108 MC. F.M.

ZENITH MODEL H725Z1 CHASSIS 7G01Z1