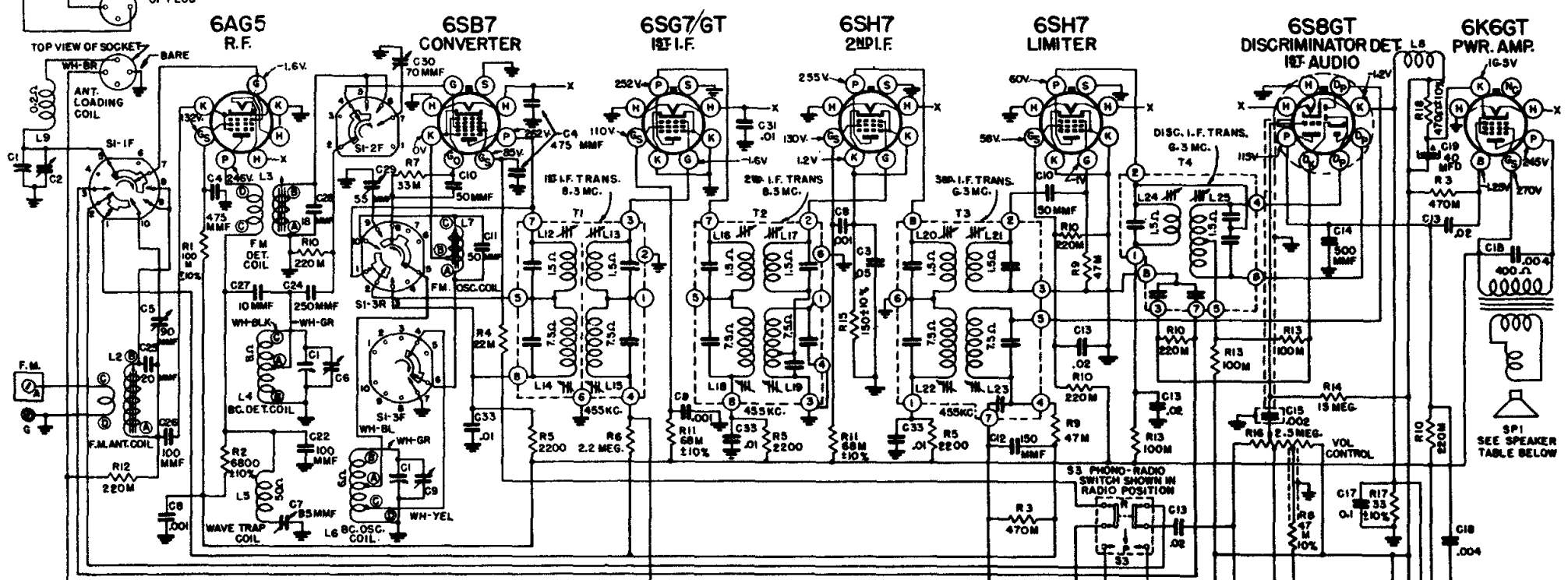
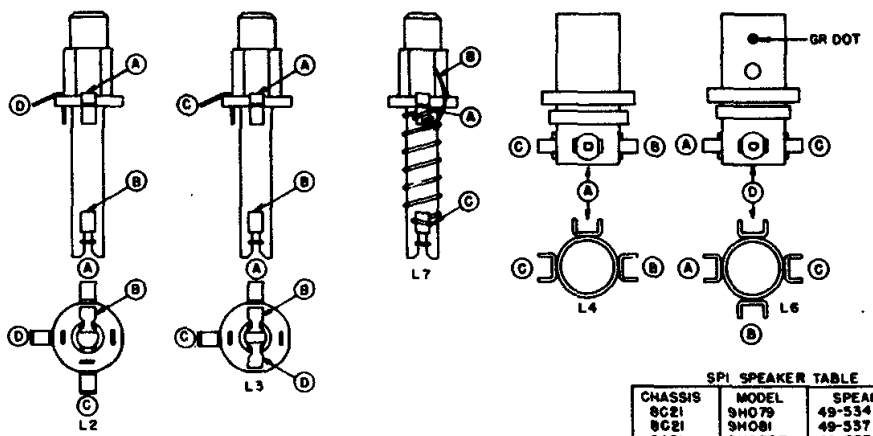


MODELS 9H079-9H081-9H082-9H085-9H088 **CHASSIS No. 8C21**

ALL VOLTAGES MEASURED FROM COMMON RETURN TO POINTS INDICATED WITH AN A.C., D.C. OR VACUUM TUBE VOLTMETER.



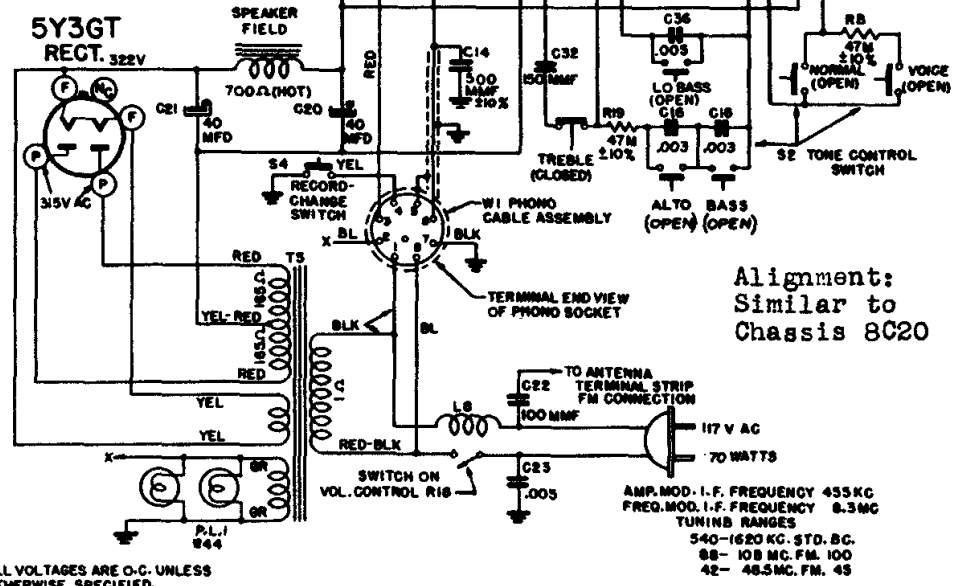
BAND SWITCH S1 SHOWN IN ST'D BROADCAST POSITION
 BAND SWITCH POSITIONS
 1ST POS. ST'D BROADCAST
 2ND POS. FM 100
 3RD POS. FM 45



↑
 DENOTES CHASSIS

SPI SPEAKER TABLE

CHASSIS	MODEL	SPEAKER
8C21	SH079	49-534 10"
8C21	SH081	49-537 12"
8C21	SH085R	49-537 12"
8C21	SH088R	49-530 12"
8C21	SH082R	49-555 8"



Alignment:
 Similar to
 Chassis 8C20

ALL VOLTAGES ARE O.C. UNLESS OTHERWISE SPECIFIED.

AMP. MOD. I.F. FREQUENCY 455 KC
 FREQ. MOD. I.F. FREQUENCY 8.3 MC
 TUNING RANGES
 540-1620 KC. STD. BC.
 88-108 MC. FM. 100
 42-48.5 MC. FM. 45