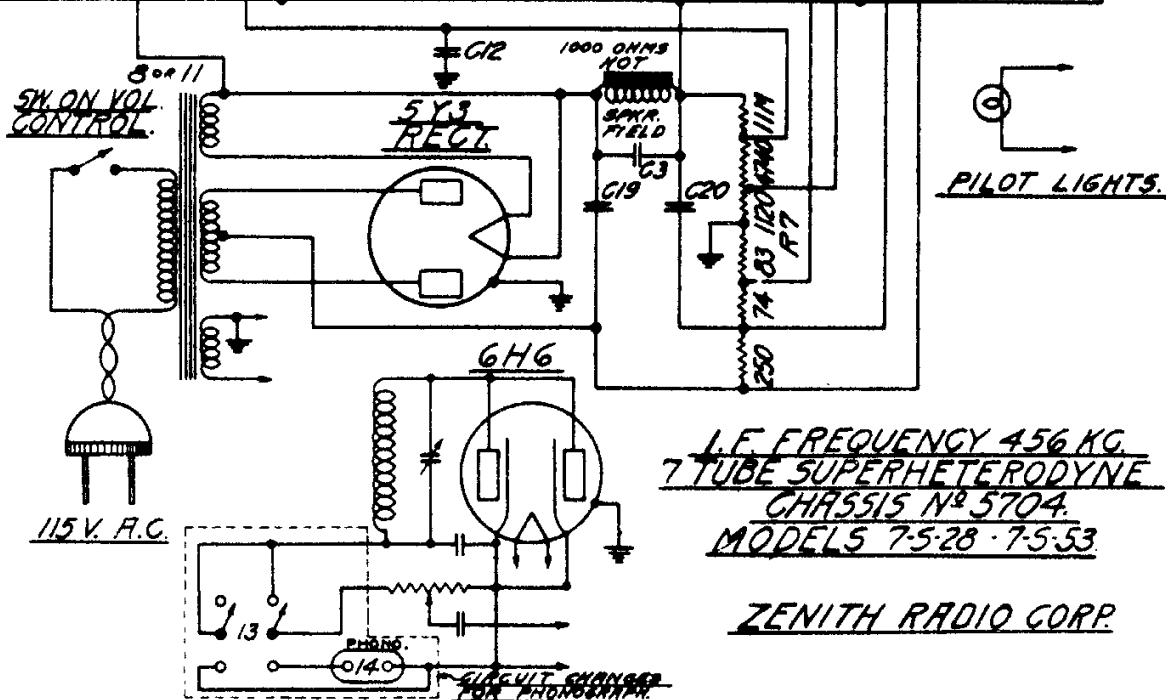


DIAG. NO.	PART NO.	DESCRIPTION	DIAG. NO.	PART NO.	DESCRIPTION
C1	22-243	01 400V	R1	63-273	99M OHMS 1/2W
C2	22-410	003 600V	R2	63-373	11M 1/2W
C3	22-170	.1 400V	R3	63-353	19M 1/2W
C4	22-289	.00005 600V	R4	63-280	49M 1/2W
C5	22-409	VARIABLE 600V	R5	63-457	400M VOL. CONTROL
C6	22-127	.000025 600V	R6	63-293	990M OHMS 1/2W
C7	22-212	.05 400V	R7	63-453	CANDOM
C8	22-411	.0023 600V	R8	63-466	990 OHMS 1/2W
C9	22-345	.0011 600V	R9	63-258	490M 1/2W
C10	22-205	200-550 PADDER 600V	R10	63-458	50M TONE CONTROL
C11	22-82	.001 600V			
C12	22-224	.1 300V			
C13	22-188	.02 400V			
C14	22-420	10 MFD 25V			
C15	22-162	.0001 600V			
C16	22-435	.02 600V			
C17	22-190	.1 200V			
C18	22-417	.1 600V			
C19		8 MFD 450V			
C20	22-416	8 MFD 450V			
C21		2 MFD 450V			
C22	22-408	2-3.5 MMFD. 200V			
C23	22-250	.05 200V			



I.F. FREQUENCY 456 KC.
7 TUBE SUPERHETERODYNE
CHASSIS NO 5704.
MODELS 7-5-28-7-5-53

ZENITH RADIO CORP.