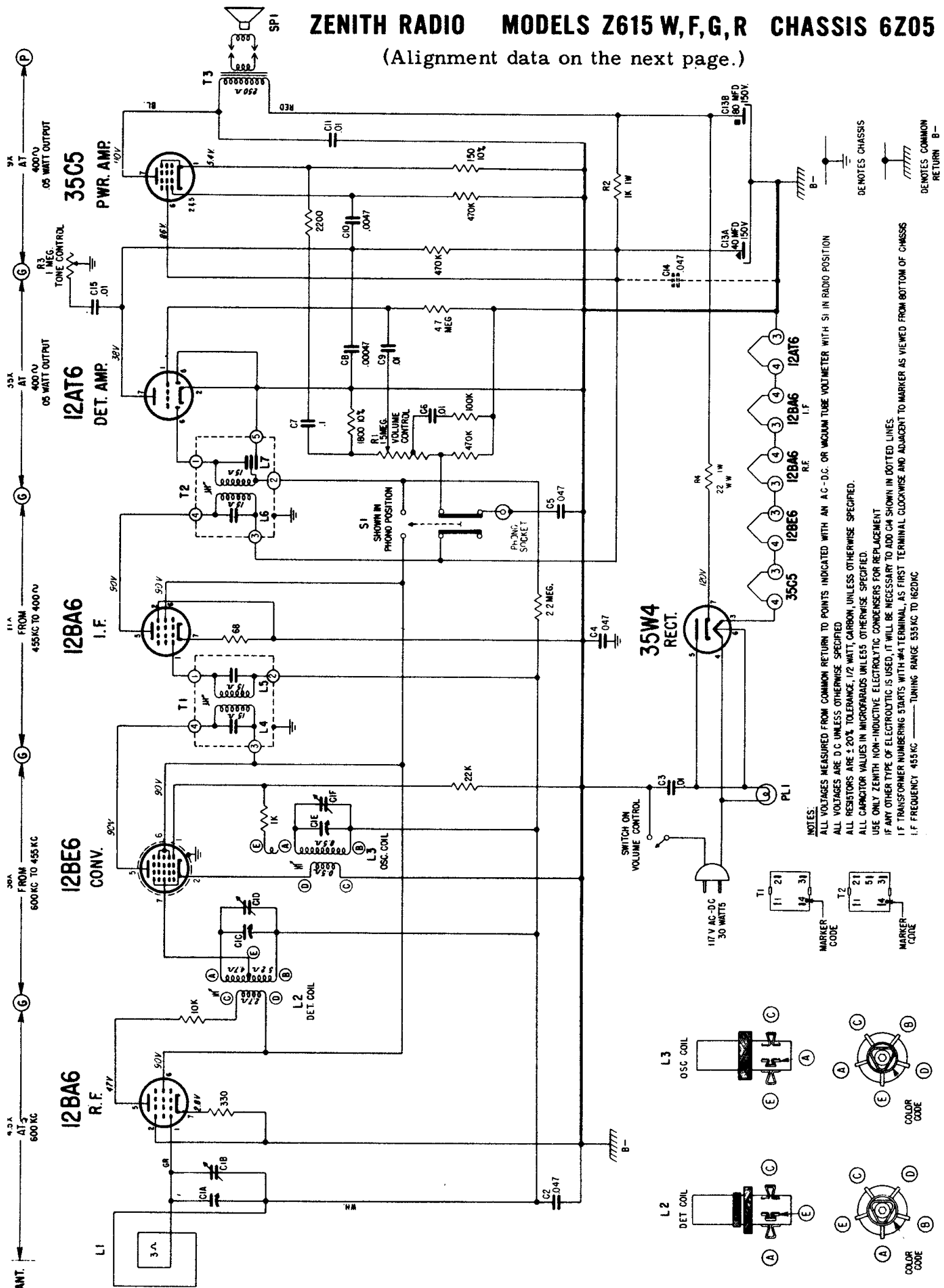
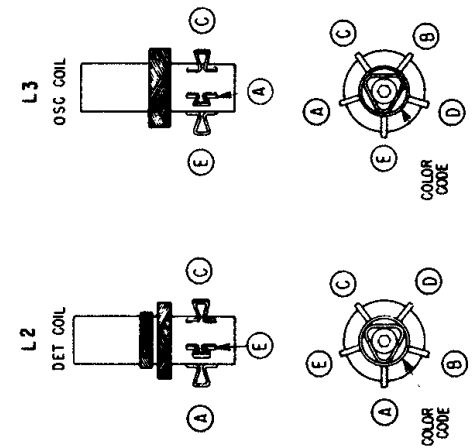


ZENITH RADIO MODELS Z615 W,F,G,R CHASSIS 6Z05

(Alignment data on the next page.)



NOTES:
 ALL VOLTAGES MEASURED FROM COMMON RETURN TO POINTS INDICATED WITH AN A.C.-D.C. OR VACUUM TUBE VOLTMETER WITH SI IN RADIO POSITION
 ALL RESISTORS ARE 20% TOLERANCE, 1/2 WATT, CARBON, UNLESS OTHERWISE SPECIFIED.
 ALL CAPACITOR VALUES IN MICROFARADS UNLESS OTHERWISE SPECIFIED.
 USE ONLY ZENITH NON-INDUCTIVE ELECTROLYTIC CONDENSERS FOR REPLACEMENT
 IF ANY OTHER TYPE OF ELECTROLYTIC IS USED, IT WILL BE NECESSARY TO ADD C4 SHOWN IN DOTTED LINES.
 I.F. TRANSFORMER NUMBERING STARTS WITH #4 TERMINAL, AS FIRST TERMINAL CLOCKWISE AND ADJACENT TO MARKER AS VIEWED FROM BOTTOM OF CHASSIS
 I.F. FREQUENCY 455 KC — TUNING RANGE 535 KC TO 1620 KC

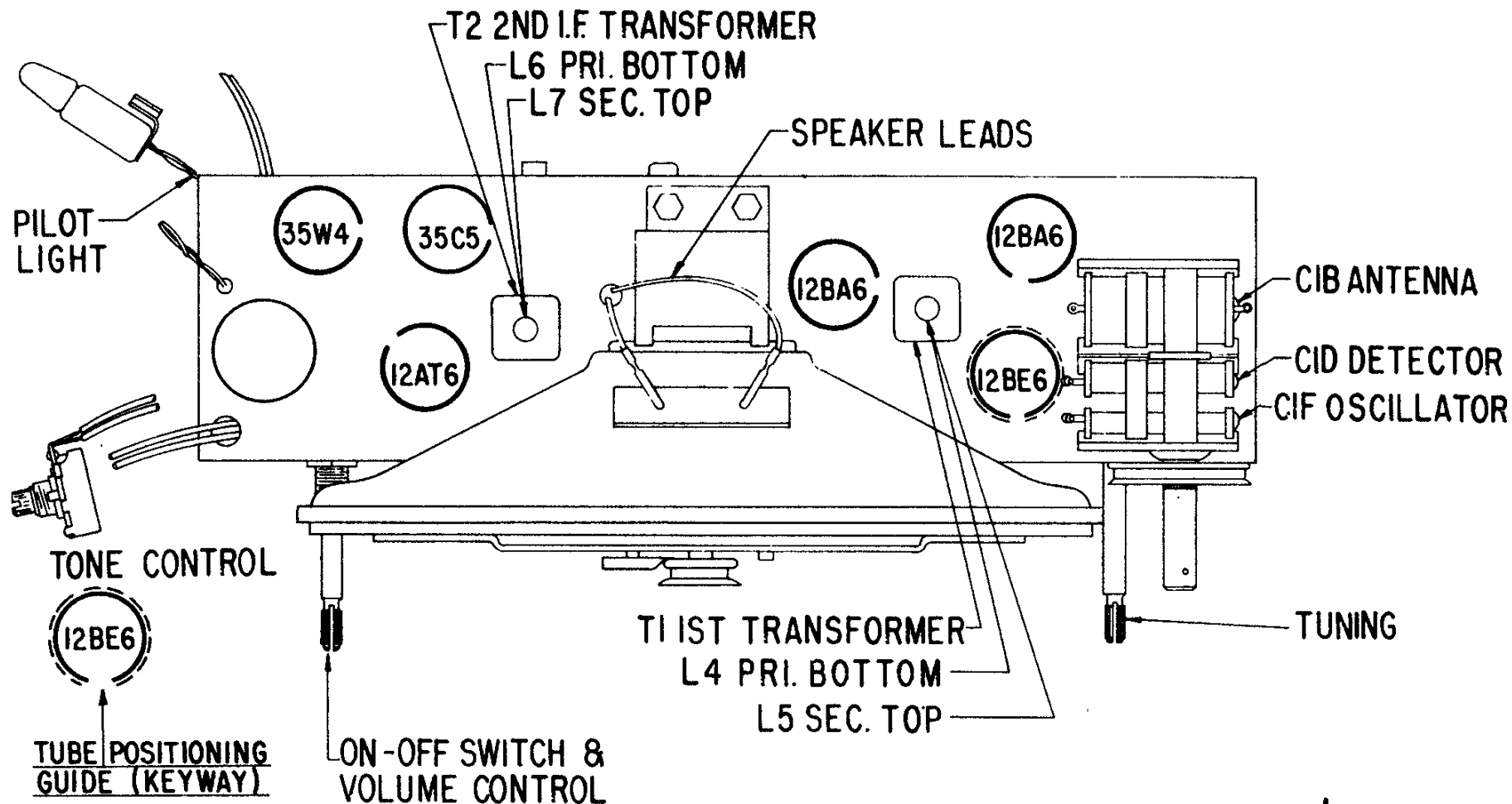


DE NOTES CHASSIS
 DENOTES COMMON
 RETURN B-

ZENITH RADIO CORPORATION

MODELS Z615 W,F,G,R CHASSIS 6Z05

(Alignment Information, Continued)



ALIGNMENT PROCEDURE

OPERATION	CONNECT OSCILLATOR TO	DUMMY ANTENNA	INPUT SIG. FREQUENCY	SET DIAL AT	TRIMMERS	PURPDSE
1	Converter Grid	.5 Mfd.	455 Kc.	600 Kc.	L4, L5, L6, L7	For I.F. Alignment
2	One Turn Loop Coupled Loosely to Wave Magnet	—	1600 Kc.	1600 Kc.	C1F	Set Oscillator to Dial Scale
3		—	1400 Kc.	1400 Kc.	C1D	Detector Alignment
4		—	1400 Kc.	1400 Kc.	C1B	Align Antenna Stage

