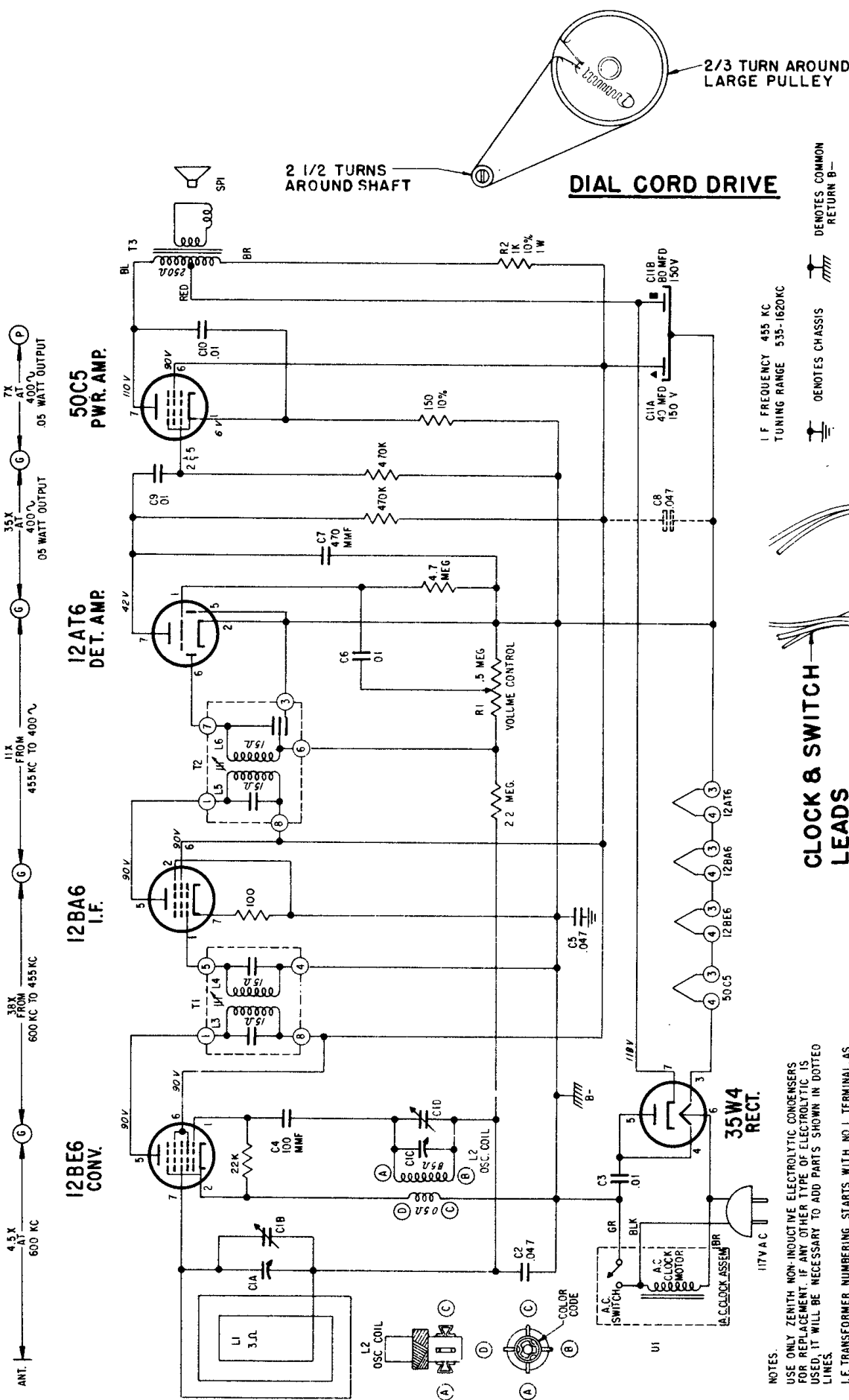


ZENITH RADIO CORPORATION MODELS Z515, W & Y Chassis 5Z06



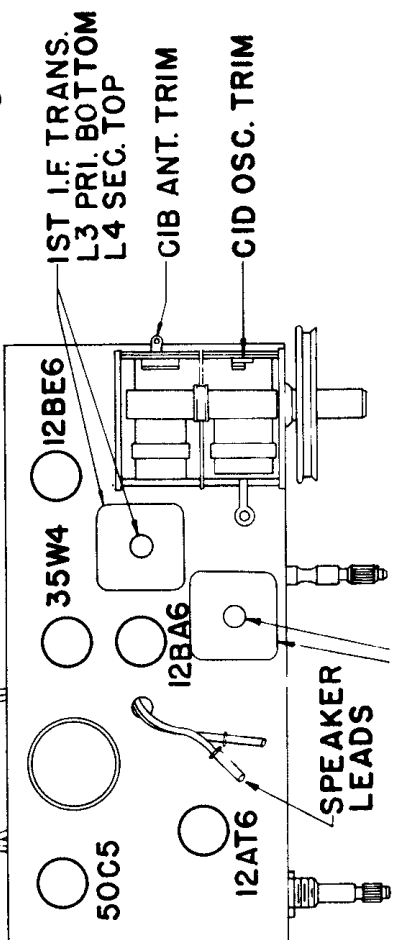
I.F. FREQUENCY 455 KC  
TUNING RANGE 535-1620KC

0ENOTES CHASSIS  
DENOTES COMMON  
RETURN B-

CLOCK & SWITCH  
LEADS

Alignment Procedure

	CONNECT OSCILLATOR TD	DUMMY ANTENNA	INPUT SIG. FREQUENCY	SET DIAL AT	TRIMMERS
1	Converter Grid	.5 Mfd.	455 Kc.	600 Kc.	L3, 4, 5, 6
2	One Turn Loop Coupled Loosely to Wave Magnet	—	1600 Kc.	1600 Kc.	CID
3		—	1400 Kc.	1400 Kc.	CIB



NOTES:  
USE ONLY ZENITH NON-INDUCTIVE ELECTROLYTIC CONDENSERS FOR REPLACEMENT. IF ANY OTHER TYPE OF ELECTROLYTIC IS USED, IT WILL BE NECESSARY TO ADD PARTS SHOWN IN DOTTED LINES.  
I.F. TRANSFORMER NUMBERING STARTS WITH NO. 1 TERMINAL AS FIRST TERMINAL CLOCKWISE AND ADJACENT TO MARKER AS VIEWED FROM BOTTOM OF CHASSIS.  
ALL VOLTAGES MEASURED FROM COMMON RETURN TO POINTS INDICATED WITH AN A.C.-D.C. OR VACUUM TUBE VOLTMETER.  
ALL VOLTAGES ARE D.C. UNLESS OTHERWISE SPECIFIED.  
ALL RESISTOR TOLERANCES ±20%, CARBON, 1/2 WATT UNLESS OTHERWISE SPECIFIED.