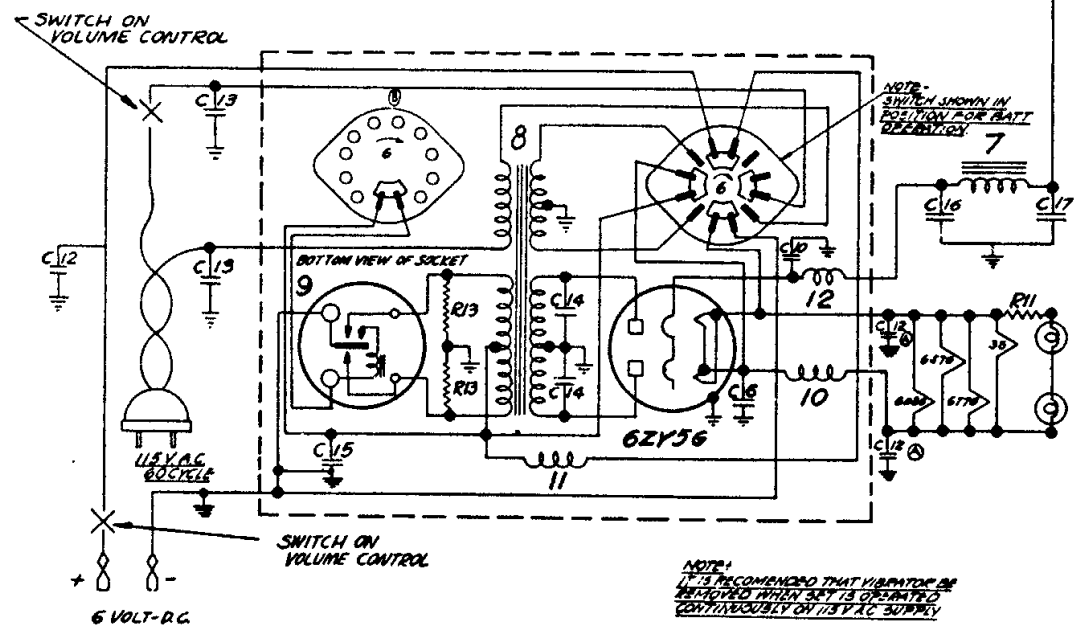


QTY.	PART NO.	DESCRIPTION	QTY.	PART NO.	DESCRIPTION
C1	22-593	TWO GANG VARIABLE	R1	63-632	560 OHM 1/4 W ± 10
C2	22-487	.05 MFD. 400 V.	R2	63-593	47M OHM 1/4 W ± 20
C3	22-289	50 MMFD. 600 V.	R3	63-589	10 M OHM 1/4 W ± 20
C4	22-358	.002 MFD. 600 V.	R4	63-150	10 M OHM 1/2 W ± 20
C5	22-363	FIXED PADDER	R5	63-681	36 M OHM 1/2 W ± 10
C6	22-250	.05 MFD. 200 V.	R6	63-271	1 MEG OHM 1/4 W ± 20
C7	22-243	.01 MFD. 400 V.	R7	63-634	820 OHM 1/4 W ± 10
C8	22-182	.00025 MFD. 600 V.	R8	63-160	100 M OHM 1/2 W ± 10
C9	22-147	.0005 MFD. 600 V.	R9	63-597	470 M OHM 1/4 W ± 20
C10	22-212	.05 MFD. 400 V.	R10	63-689	400 M OHM VOLUME CONTROL
C11	22-492	.002 MFD. 600 V.	R11	63-533	1.5 OHM WIREWOUND
C12	22-350	.25 MFD. 200 V.	R12	63-418	1500 OHM 1/2 W ± 10
C13	22-435	.02 MFD. 600 V.	R13	63-577	100 OHM 1/4 W ± 20
C14	22-374	.02 MFD. 600 V.			
C15	22-199	.5 MFD. 200 V.			
C16		8 MFD ELECTROLYTIC 250 V.			
C17	22-577	8 MFD. 250 V.			
C18		10 MFD. 25 V.			
<b>VARIABLE TRIMMERS</b>					
A		1st I.F. TRANSFORMER PRIMARY	1	5-5303	ANT. COIL & SHIELD ASSEMBLY
B		1st I.F. TRANSFORMER SECONDARY	2	5-4909	OSCILLATOR COIL ASSEMBLY
C		2nd I.F. TRANSFORMER PRIMARY	3	95-443	1st I.F. TRANSFORMER
D		2nd I.F. TRANSFORMER SECONDARY	4	95-444	2nd I.F. TRANSFORMER
E		BROADCAST OSCILLATOR (SEE NOTE)	5	85-104	BAND SELECTOR SWITCH
F		ANTENNA BROADCAST (ON GANG)	6	85-425	POWER SUPPLY SWITCH
G		*22-519 BROADCAST PADDER	7	95-298	POWER CHOKES
H		SHORT WAVE OSCILLATOR (SEE NOTE)	8	95-425	POWER TRANSFORMER
I		SHORT WAVE DETECTOR (SEE NOTE)	9	190-11	VIBRATOR
J			10	5-2778	R.F. CHOKES ASSEMBLY
K			11	5-5043	R.F. CHOKES ASSEMBLY
L			12	20-82	R.F. CHOKES
			13		SPEAKER TRANSFORMER

NOTE — TRIMMERS F, K, & L MOUNTED ON BAKELITE STRIP "ER-324"



I.F. FREQUENCY 456 K.C.  
 5 TUBE BATTERY SUPERHETERODYNE  
 6VOLT D.C. + 115 VOLT A.C.  
 CHASSIS NO 5524

ZENITH RADIO CORP.

Models 5-J-217, 5-J-247, 5-J-255 (5524 Chassis)