

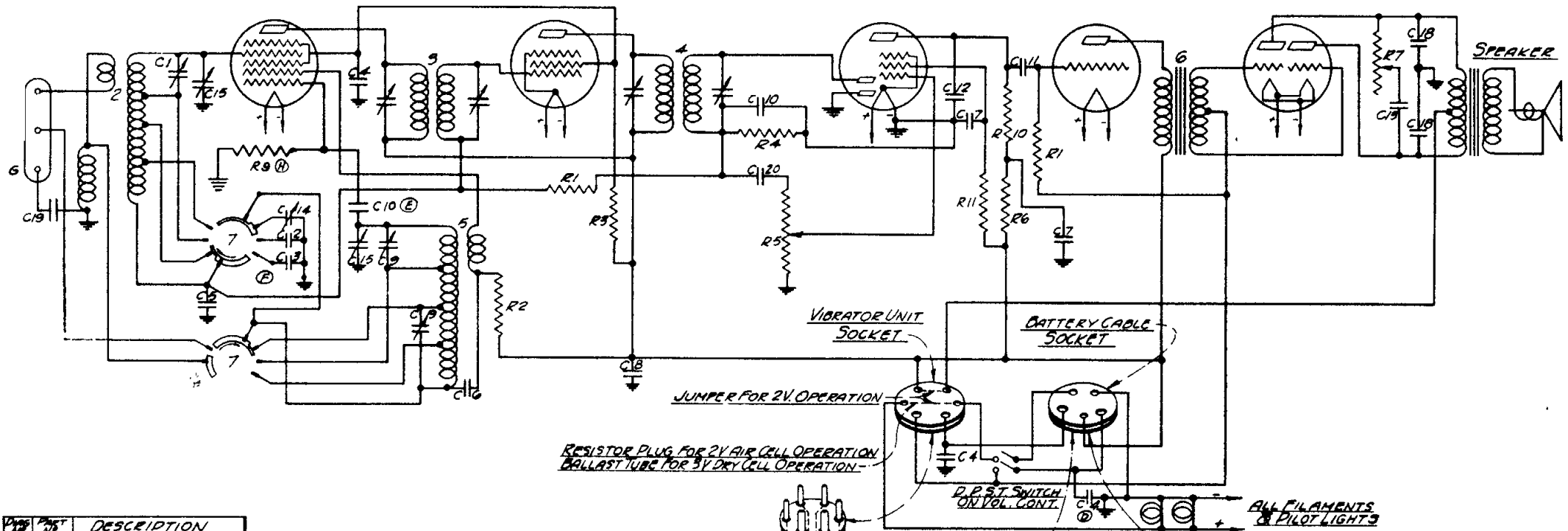
DETECTOR-OSCILLATOR  
1C7

I.F. TUBE  
105

2ND DETECTOR-A.V.C.  
1F7

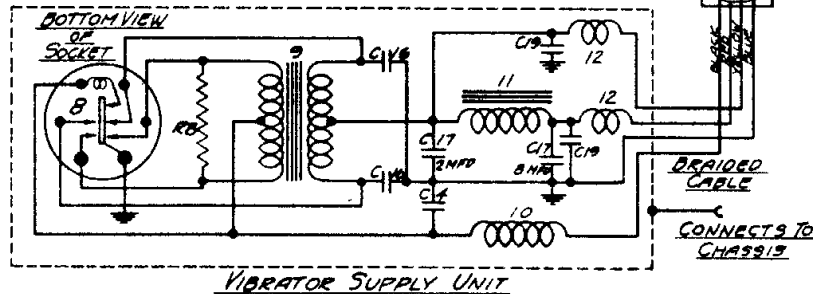
DRIVER TUBE  
1H4

POWER TUBE  
1V6

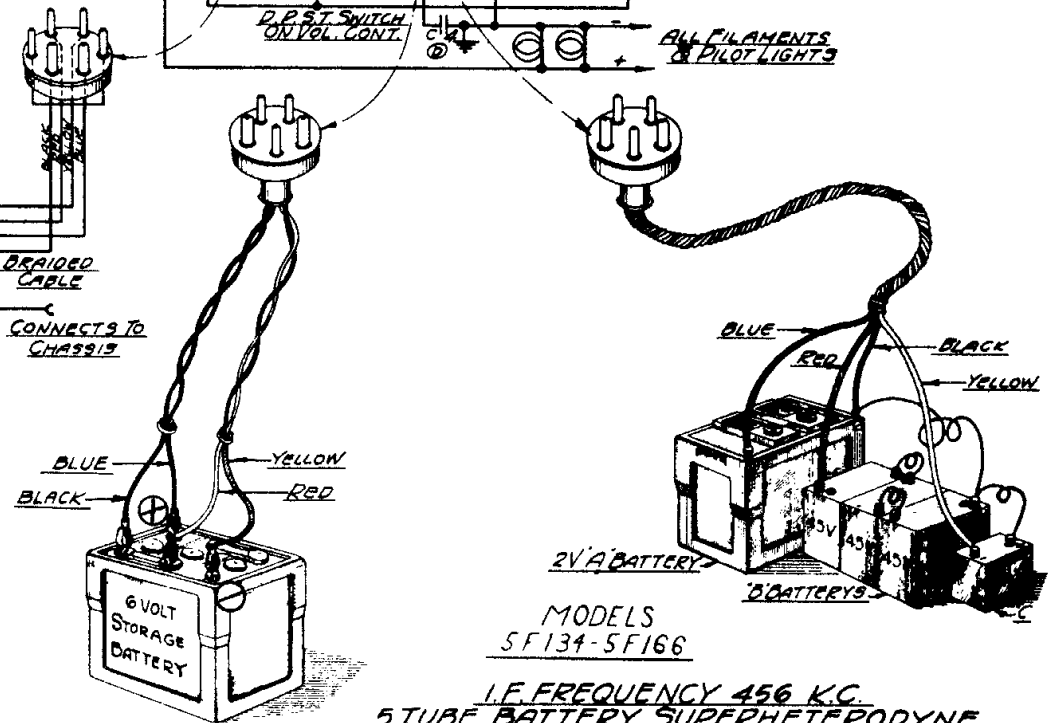


Part No.	DESCRIPTION	Value
C1	2-35 MMFD PADER	600V
C2	.0015 MFD	600V
C3	.005 MFD	200V
C4	.05 MFD	400V
C5	.05 MFD	600V
C6	.0012 MFD	200V
C7	.05 MFD	200V
C8	.05 MFD	400V
C9	2-35 MMFD TRIMMER	600V
C10	50 MMFD	400V
C11	.02 MFD	600V
C12	.00025 MFD	600V
C13	.05 MFD	600V
C14	200-550 MFD PADER	1800V
C15	2 GANG VARIABLE COND	1800V
C16	.01 MFD	250V
C17	28.5 MFD DRY ELEC.	600V
C18	.002 MFD	400V
C19	.01 MFD (TUBULAR)	200V
C20	.02 MFD (TUBULAR)	200V

Part No.	DESCRIPTION	Value
R1	65-293	990 M OHMS
R2	361	9 M OHMS
R3	359	40 M OHMS
R4	481	400 M OHMS
R5	541	1 MEG OHM VOL. CONT.
R6	278	99 M OHMS
R7	521	50 M OHM TONE CONTROL
R8	394	200 OHMS
R9	339	75 M OHMS
R10	400	250 M OHMS
R11	441	1 MEG OHM



SPEAKER MODEL	
49-162-6"PM	5F-134
49-164-8"PM	5F-166



MODELS  
5F134-5F166  
I.F. FREQUENCY 456 KC.  
5 TUBE BATTERY SUPERHETERODYNE  
CHASSIS NO 5518

ZENITH RADIO CORPORATION