

USE ONLY ZENITH NON-INDUCTIVE ELECTROLYTIC CONDENSER FOR REPLACEMENT. IF ANY OTHER TYPE OF ELECTROLYTIC IS USED IT WILL BE NECESSARY TO ADD PARTS SHOWN IN DOTTED LINES.

I.F. TRANSFORMER NUMBERING STARTS WITH #1 TERMINAL AS FIRST TERMINAL CLOCKWISE AND ADJACENT TO MARKER AS VIEWED FROM BOTTOM OF CHASSIS.

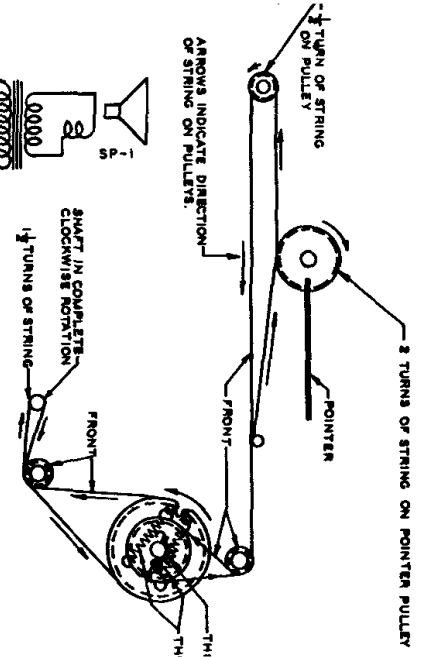
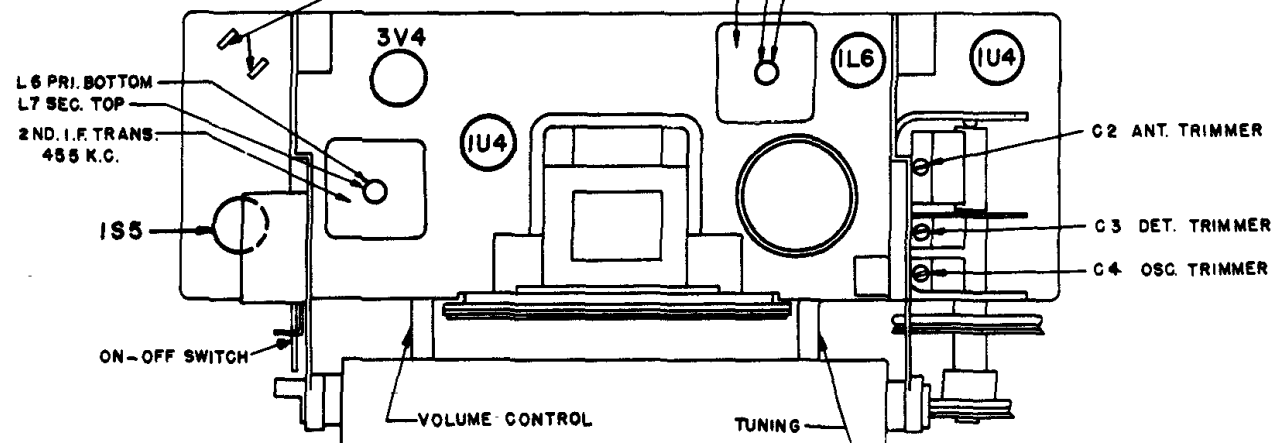
ALL VOLTAGES MEASURED FROM COMMON RETURN TO POINTS INDICATED WITH A D.C. VACUUM TUBE VOLTMETER.

ALL RESISTORS ± 20% TOLERANCE UNLESS OTHERWISE SPECIFIED.

10 WATTS
117V.A.C.-D.C.
INSERT A.C. PLUG HERE
FOR BATTERY OPERATION

1ST. I.F. TRANS.
455 K.C.
L4 PRI. BOTTOM
L5 SEC. TOP

I.F. FREQUENCY 455 K.C.
TUNING RANGE
835-1620 K.C. STD. BC.
BATTERY PACK NO. Z 909



MODEL G503—CHASSIS 5G41

