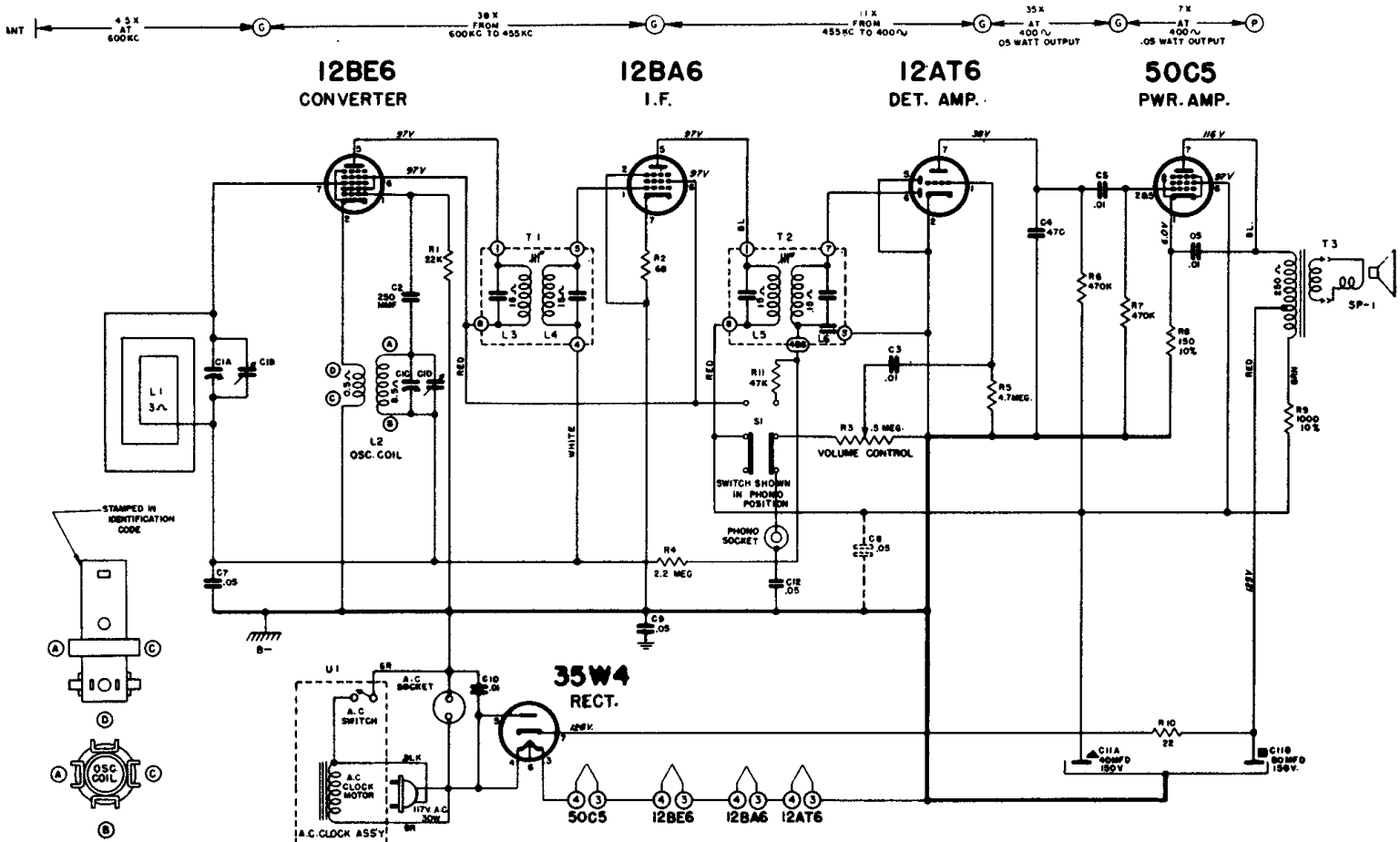
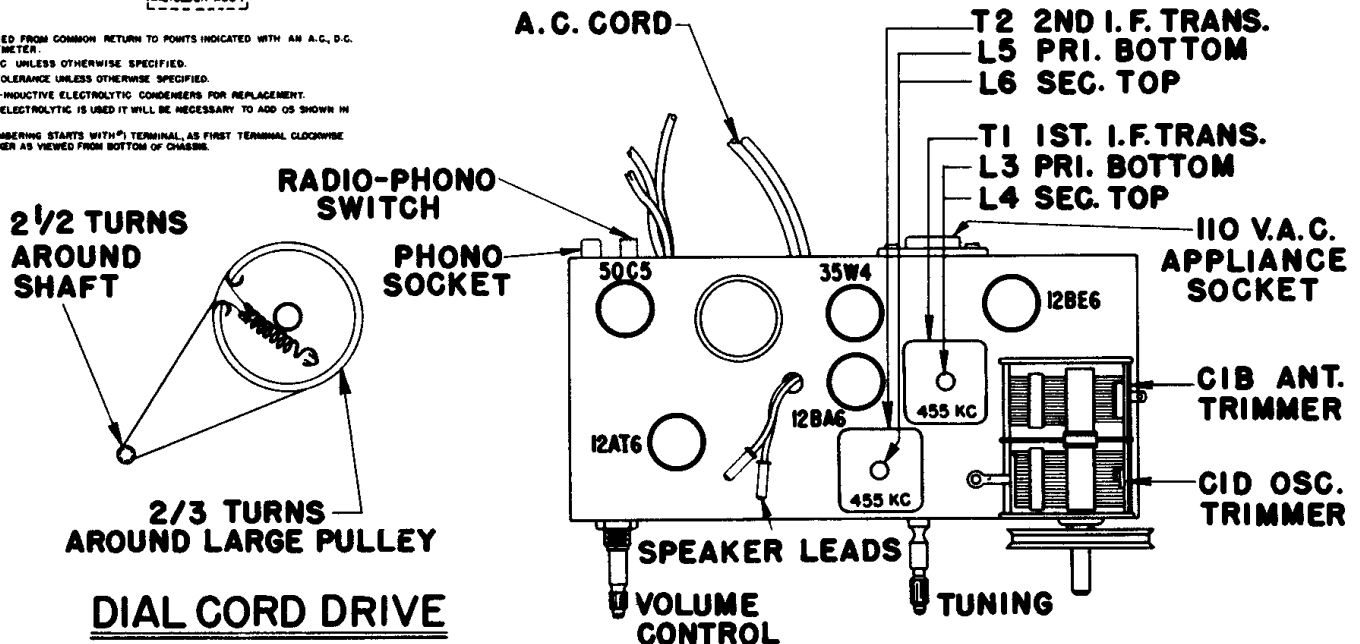


# ZENITH RADIO CORPORATION

## MODELS T522R, G, W, V & F CHASSIS 5T06



NOTES:  
ALL VOLTAGES MEASURED FROM COMMON RETURN TO POINTS INDICATED WITH AN A.C., D.C.  
OR VACUUM TUBE VOLT-METER.  
ALL VOLTAGES ARE D.C. UNLESS OTHERWISE SPECIFIED.  
ALL RESISTORS  $\pm 20\%$  TOLERANCE UNLESS OTHERWISE SPECIFIED.  
USE ONLY ZENITH NON-INDUCTIVE ELECTROLYTIC CONDENSERS FOR REPLACEMENT.  
IF ANY OTHER TYPE OF ELECTROLYTIC IS USED IT WILL BE NECESSARY TO ADD OS SHOWN IN  
DOTTED LINES.  
I.F. TRANSFORMER NUMBERING STARTS WITH 1<sup>ST</sup> TERMINAL AS FIRST TERMINAL CLOCKWISE  
AND ADJACENT TO MARKER AS VIEWED FROM BOTTOM OF CHASSIS.



### ALIGNMENT PROCEDURE

OPERATION	CONNECT OSCILLATOR TO	DUMMY ANTENNA	INPUT SIG. FREQUENCY	SET DIAL AT	TRIMMERS	PURPOSE
1	Converter Grid	.5 Mfd.	455 Kc.	600 Kc.	L3, 4, 5, 6	For I.F. Alignment
2	One Turn Loop Coupled Loosely to Wave Magnet	—	1600 Kc.	1600 Kc.	CID	Set Oscillator to Dial Scale
3		—	1400 Kc.	1400 Kc.	CIB	Align Antenna Stage

DENOTES CHASSIS  
 DENOTES COMMON RETURN