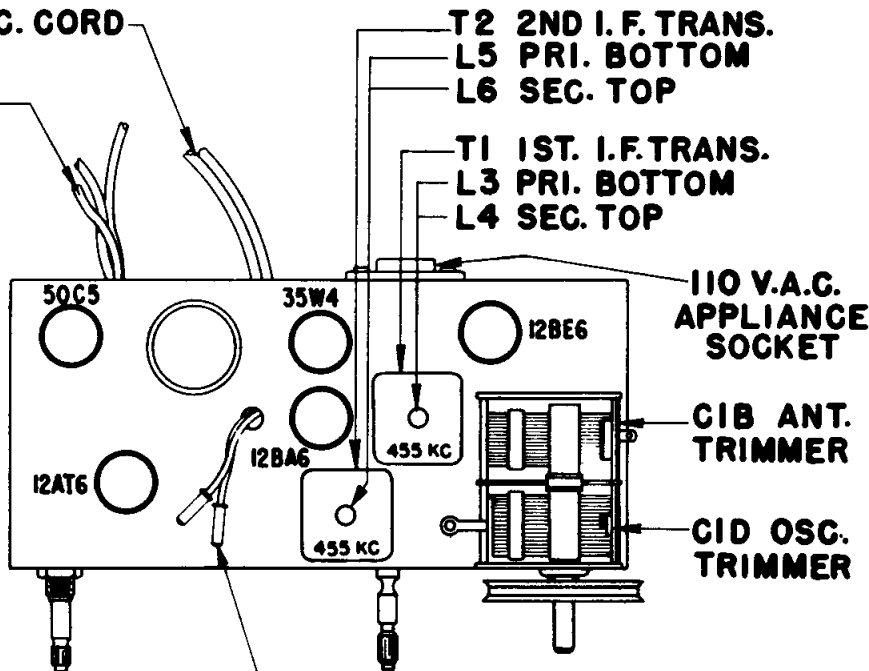
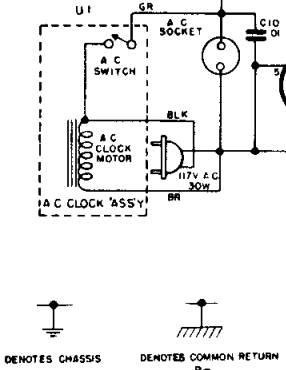


ANT. — 4.5X AT 600KC — (G) — 30X FROM 600KC TO 455KC — (G) — 11X FROM 455KC TO 400~ — (G) — 35X AT 400~ 0.5 WATT OUTPUT — (G) — 7X AT 400~ 0.5 WATT OUTPUT — (P)



OPERATION	CONNECT OSCILLATOR TO	DUMMY ANTENNA	INPUT SIG. FREQUENCY	SET DIAL AT	TRIMMERS	PURPOSE
1	Converter Grid	.5 Mfd.	455 Kc.	600 Kc.	L3, 4, 5, 6	For I.F. Alignment
2	One Turn Loop Coupled Loosely to Wave Magnet	—	1600 Kc.	1600 Kc.	C1D	Set Oscillator to Dial Scale
3		—	1400 Kc.	1400 Kc.	C1B	Align Antenna Stage