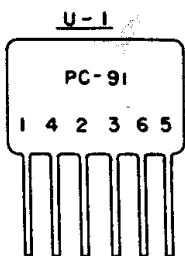
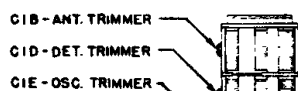


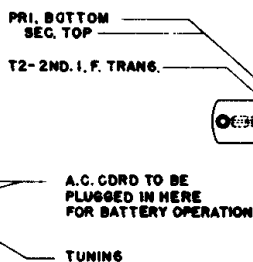
POSITION OF
TERMINALS
SWITCH S-1



ON COUPLER, SECTION LEADS
LINE UP ACCORDING TO THE PART
NUMBER AS SHOWN.



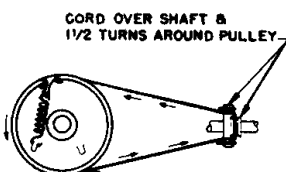
ON-OFF SWITCH
& VOLUME CONTROL



TUNE AT 600 KC

T1-1ST. I.F. TRANS.
PRI. BOTTOM
SEC. TOP

A.C. CORD



DIAL DRIVE CORD

USE ONLY ZENITH NON-INDUCTIVE ELECTROLYTIC CONDENSER
FOR REPLACEMENT.

IF ANY OTHER TYPE OF ELECTROLYTIC IS USED IT WILL BE NECESSARY
TO ADD PARTS SHOWN IN DOTTED LINES.

I.F. TRANSFORMER NUMBERING STARTS WITH NO. 1 TERMINAL AS FIRST
TERMINAL CLOCKWISE AND ADJACENT TO MARKER AS VIEWED FROM
BOTTOM OF CHASSIS.

ALL VOLTAGES MEASURED FROM COMMON RETURN TO POINTS INDICATED
WITH A D.C. VACUUM TUBE VOLTMETER.

ALL RESISTORS $\pm 20\%$ TOLERANCE UNLESS OTHERWISE SPECIFIED.

I.F. FREQUENCY 455 K.C. TUNING RANGE

535-1620 K.C. STD. BC.

BATTERY PACK NO. Z962.

OPERATION	CONNECT OSCILLATOR TO	DUMMY ANTENNA	INPUT SIG. FREQUENCY	BAND	SET DIAL TO	TRIMMERS	PURPOSE
1	Converter Grid	.1 Mfd	455 Kc	BC	600 Kc.	Pri. & Sec. 1st. & 2nd. I. F.	I. F. Alignment
2	Two turns loosely coupled to Wavemagnet		1600 Kc.	BC	1600 Kc.	Osc. Trim. C1E	Set Oscillator to scale
3	Two turns loosely coupled to Wavemagnet		1400 Kc.	BC	1400 Kc.	Ant. & Det. Trims. C1B & C1D	Align Wave-magnet