

# WESTERN AIR PATROL

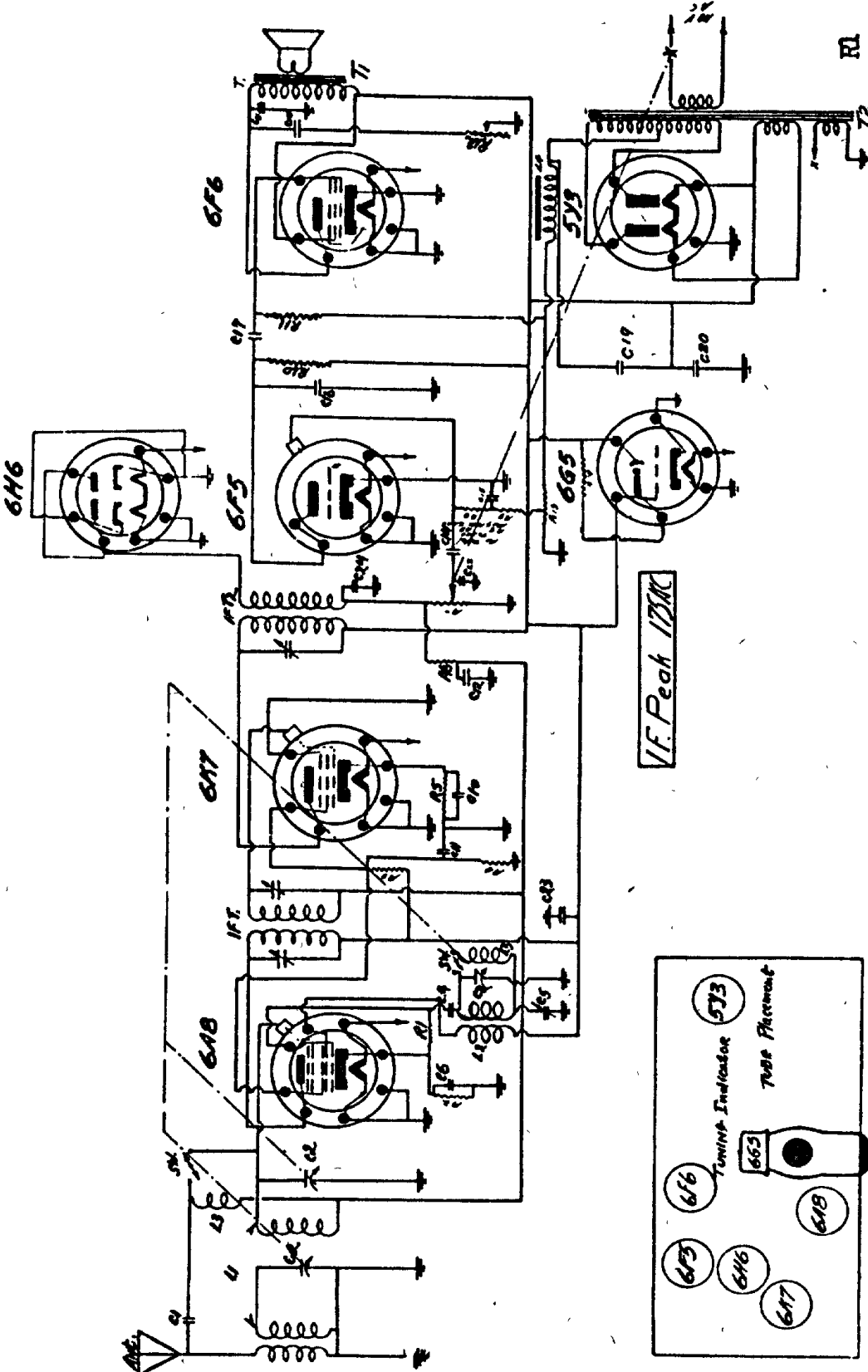
MODEL 66  
Chassis W486

## CONDENSERS

C1	.00022 MFD
C2	Variable Cond.
C4	.00005 MFD
C5	500 MMFD
C6	.1 MFD
C10	.1 MFD
C11	.1 MFD
C12	.1 MFD
C14	.02 MFD
C15	.1 MFD
C16	.0003 MFD
C17	.02 MFD
C18	.05 MFD
C19	8 MFD
C20	4 MFD
C21	.006 MFD
C22	.00025 MFD
C23	.25 MFD
C24	.001 MFD

## RESISTORS

R1	60,000 wire wound
R2	100 $\Omega$
R3	30,000 $\Omega$
R4	50,000 $\Omega$
R5	100 $\Omega$
R6	50,000 $\Omega$
R7	500,000 $\Omega$
R8	1 Meg.
R9	100,000 $\Omega$
R10	250,000 $\Omega$
R11	1 Meg.
R12	50,000 tone Cont.
R13	360.40 $\Omega$
R14	1 Meg. (in tube socket)



## KNOB LAYOUT

1 - Band Selector

2 - Station Selector

3 - Volume Control

4 - Tone Control

Blue Wire - Antenna

Black Wire - Ground

