

# WATTERSON RADIO MFG. CO.

MODEL 79  
MODEL 406  
MODEL 669

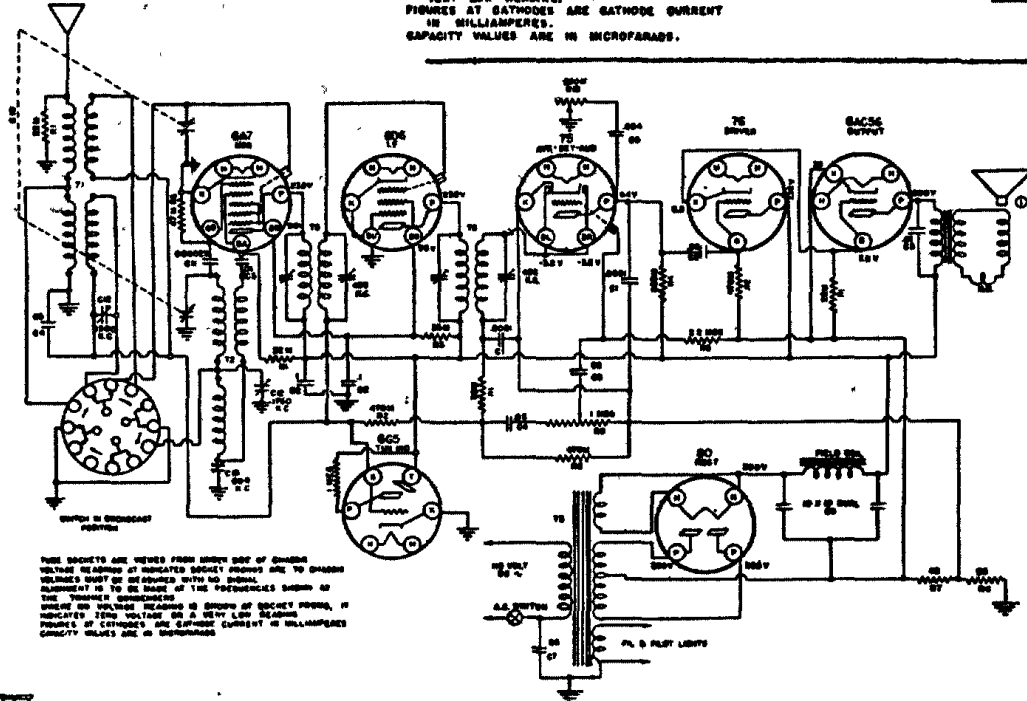
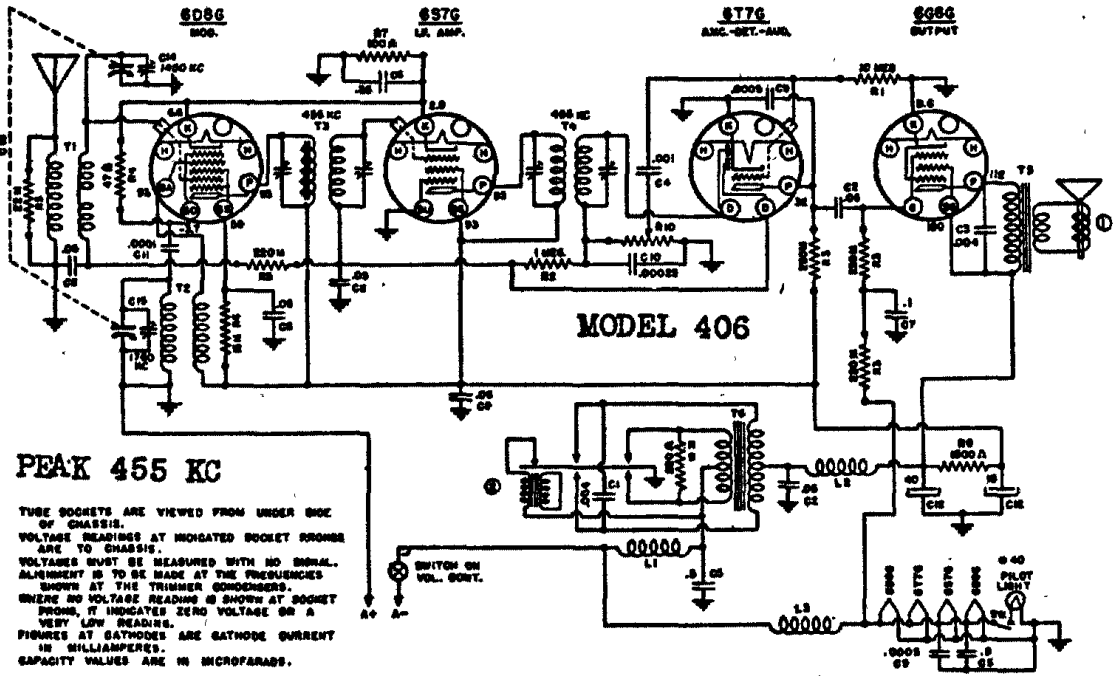
CODE	PART NO.	DESCRIPTION
C1	10-127	.004 MFD. 1000 V. BUFFER COND.
C2	1407	.05
C3	10-128	.004
C4	10-124	.001
C5	10-112	.5
C6	10-120	.25
C7	10-118	.1
C8	10-116	.05
C9	10-112	.0005
C10	10-112	.0005
C11	10-112	.0005
C12	10-112	.0005
C13	10-112	.0005
C14	10-112	.0005
C15	10-112	.0005
C16	10-112	.0005
C17	10-112	.0005
C18	10-112	.0005
C19	10-112	.0005
C20	10-112	.0005
C21	10-112	.0005
C22	10-112	.0005
C23	10-112	.0005
C24	10-112	.0005
C25	10-112	.0005
C26	10-112	.0005
C27	10-112	.0005
C28	10-112	.0005
C29	10-112	.0005
C30	10-112	.0005
C31	10-112	.0005
C32	10-112	.0005
C33	10-112	.0005
C34	10-112	.0005
C35	10-112	.0005
C36	10-112	.0005
C37	10-112	.0005
C38	10-112	.0005
C39	10-112	.0005
C40	10-112	.0005
C41	10-112	.0005
C42	10-112	.0005
C43	10-112	.0005
C44	10-112	.0005
C45	10-112	.0005
C46	10-112	.0005
C47	10-112	.0005
C48	10-112	.0005
C49	10-112	.0005
C50	10-112	.0005
C51	10-112	.0005
C52	10-112	.0005
C53	10-112	.0005
C54	10-112	.0005
C55	10-112	.0005
C56	10-112	.0005
C57	10-112	.0005
C58	10-112	.0005
C59	10-112	.0005
C60	10-112	.0005
C61	10-112	.0005
C62	10-112	.0005
C63	10-112	.0005
C64	10-112	.0005
C65	10-112	.0005
C66	10-112	.0005
C67	10-112	.0005
C68	10-112	.0005
C69	10-112	.0005
C70	10-112	.0005
C71	10-112	.0005
C72	10-112	.0005
C73	10-112	.0005
C74	10-112	.0005
C75	10-112	.0005
C76	10-112	.0005
C77	10-112	.0005
C78	10-112	.0005
C79	10-112	.0005
C80	10-112	.0005
C81	10-112	.0005
C82	10-112	.0005
C83	10-112	.0005
C84	10-112	.0005
C85	10-112	.0005
C86	10-112	.0005
C87	10-112	.0005
C88	10-112	.0005
C89	10-112	.0005
C90	10-112	.0005
C91	10-112	.0005
C92	10-112	.0005
C93	10-112	.0005
C94	10-112	.0005
C95	10-112	.0005
C96	10-112	.0005
C97	10-112	.0005
C98	10-112	.0005
C99	10-112	.0005
C100	10-112	.0005

CODE	PART NO.	DESCRIPTION
R1	60-103	10 MEGOHM 1/2 W RESISTOR
R2	60-103	10 MEGOHM 1/2 W RESISTOR
R3	60-103	10 MEGOHM 1/2 W RESISTOR
R4	60-103	10 MEGOHM 1/2 W RESISTOR
R5	60-103	10 MEGOHM 1/2 W RESISTOR
R6	60-103	10 MEGOHM 1/2 W RESISTOR
R7	60-103	10 MEGOHM 1/2 W RESISTOR
R8	60-103	10 MEGOHM 1/2 W RESISTOR
R9	60-103	10 MEGOHM 1/2 W RESISTOR
R10	60-103	10 MEGOHM 1/2 W RESISTOR
R11	60-103	10 MEGOHM 1/2 W RESISTOR
R12	60-103	10 MEGOHM 1/2 W RESISTOR
R13	60-103	10 MEGOHM 1/2 W RESISTOR
R14	60-103	10 MEGOHM 1/2 W RESISTOR
R15	60-103	10 MEGOHM 1/2 W RESISTOR
R16	60-103	10 MEGOHM 1/2 W RESISTOR
R17	60-103	10 MEGOHM 1/2 W RESISTOR
R18	60-103	10 MEGOHM 1/2 W RESISTOR
R19	60-103	10 MEGOHM 1/2 W RESISTOR
R20	60-103	10 MEGOHM 1/2 W RESISTOR
R21	60-103	10 MEGOHM 1/2 W RESISTOR
R22	60-103	10 MEGOHM 1/2 W RESISTOR
R23	60-103	10 MEGOHM 1/2 W RESISTOR
R24	60-103	10 MEGOHM 1/2 W RESISTOR
R25	60-103	10 MEGOHM 1/2 W RESISTOR
R26	60-103	10 MEGOHM 1/2 W RESISTOR
R27	60-103	10 MEGOHM 1/2 W RESISTOR
R28	60-103	10 MEGOHM 1/2 W RESISTOR
R29	60-103	10 MEGOHM 1/2 W RESISTOR
R30	60-103	10 MEGOHM 1/2 W RESISTOR
R31	60-103	10 MEGOHM 1/2 W RESISTOR
R32	60-103	10 MEGOHM 1/2 W RESISTOR
R33	60-103	10 MEGOHM 1/2 W RESISTOR
R34	60-103	10 MEGOHM 1/2 W RESISTOR
R35	60-103	10 MEGOHM 1/2 W RESISTOR
R36	60-103	10 MEGOHM 1/2 W RESISTOR
R37	60-103	10 MEGOHM 1/2 W RESISTOR
R38	60-103	10 MEGOHM 1/2 W RESISTOR
R39	60-103	10 MEGOHM 1/2 W RESISTOR
R40	60-103	10 MEGOHM 1/2 W RESISTOR
R41	60-103	10 MEGOHM 1/2 W RESISTOR
R42	60-103	10 MEGOHM 1/2 W RESISTOR
R43	60-103	10 MEGOHM 1/2 W RESISTOR
R44	60-103	10 MEGOHM 1/2 W RESISTOR
R45	60-103	10 MEGOHM 1/2 W RESISTOR
R46	60-103	10 MEGOHM 1/2 W RESISTOR
R47	60-103	10 MEGOHM 1/2 W RESISTOR
R48	60-103	10 MEGOHM 1/2 W RESISTOR
R49	60-103	10 MEGOHM 1/2 W RESISTOR
R50	60-103	10 MEGOHM 1/2 W RESISTOR
R51	60-103	10 MEGOHM 1/2 W RESISTOR
R52	60-103	10 MEGOHM 1/2 W RESISTOR
R53	60-103	10 MEGOHM 1/2 W RESISTOR
R54	60-103	10 MEGOHM 1/2 W RESISTOR
R55	60-103	10 MEGOHM 1/2 W RESISTOR
R56	60-103	10 MEGOHM 1/2 W RESISTOR
R57	60-103	10 MEGOHM 1/2 W RESISTOR
R58	60-103	10 MEGOHM 1/2 W RESISTOR
R59	60-103	10 MEGOHM 1/2 W RESISTOR
R60	60-103	10 MEGOHM 1/2 W RESISTOR
R61	60-103	10 MEGOHM 1/2 W RESISTOR
R62	60-103	10 MEGOHM 1/2 W RESISTOR
R63	60-103	10 MEGOHM 1/2 W RESISTOR
R64	60-103	10 MEGOHM 1/2 W RESISTOR
R65	60-103	10 MEGOHM 1/2 W RESISTOR
R66	60-103	10 MEGOHM 1/2 W RESISTOR
R67	60-103	10 MEGOHM 1/2 W RESISTOR
R68	60-103	10 MEGOHM 1/2 W RESISTOR
R69	60-103	10 MEGOHM 1/2 W RESISTOR
R70	60-103	10 MEGOHM 1/2 W RESISTOR
R71	60-103	10 MEGOHM 1/2 W RESISTOR
R72	60-103	10 MEGOHM 1/2 W RESISTOR
R73	60-103	10 MEGOHM 1/2 W RESISTOR
R74	60-103	10 MEGOHM 1/2 W RESISTOR
R75	60-103	10 MEGOHM 1/2 W RESISTOR
R76	60-103	10 MEGOHM 1/2 W RESISTOR
R77	60-103	10 MEGOHM 1/2 W RESISTOR
R78	60-103	10 MEGOHM 1/2 W RESISTOR
R79	60-103	10 MEGOHM 1/2 W RESISTOR
R80	60-103	10 MEGOHM 1/2 W RESISTOR
R81	60-103	10 MEGOHM 1/2 W RESISTOR
R82	60-103	10 MEGOHM 1/2 W RESISTOR
R83	60-103	10 MEGOHM 1/2 W RESISTOR
R84	60-103	10 MEGOHM 1/2 W RESISTOR
R85	60-103	10 MEGOHM 1/2 W RESISTOR
R86	60-103	10 MEGOHM 1/2 W RESISTOR
R87	60-103	10 MEGOHM 1/2 W RESISTOR
R88	60-103	10 MEGOHM 1/2 W RESISTOR
R89	60-103	10 MEGOHM 1/2 W RESISTOR
R90	60-103	10 MEGOHM 1/2 W RESISTOR
R91	60-103	10 MEGOHM 1/2 W RESISTOR
R92	60-103	10 MEGOHM 1/2 W RESISTOR
R93	60-103	10 MEGOHM 1/2 W RESISTOR
R94	60-103	10 MEGOHM 1/2 W RESISTOR
R95	60-103	10 MEGOHM 1/2 W RESISTOR
R96	60-103	10 MEGOHM 1/2 W RESISTOR
R97	60-103	10 MEGOHM 1/2 W RESISTOR
R98	60-103	10 MEGOHM 1/2 W RESISTOR
R99	60-103	10 MEGOHM 1/2 W RESISTOR
R100	60-103	10 MEGOHM 1/2 W RESISTOR

CODE	PART NO.	DESCRIPTION
T1	10-230	ANTENNA TRANSFORMER
T2	10-240	OSCILLATOR
T3	10-250	1ST I.F.
T4	10-252	2ND I.F.
T5	10-254	3RD I.F.
T6	10-256	4TH I.F.
T7	10-258	5TH I.F.
T8	10-260	6TH I.F.
T9	10-262	7TH I.F.
T10	10-264	8TH I.F.
T11	10-266	9TH I.F.
T12	10-268	10TH I.F.
T13	10-270	11TH I.F.
T14	10-272	12TH I.F.
T15	10-274	13TH I.F.
T16	10-276	14TH I.F.
T17	10-278	15TH I.F.
T18	10-280	16TH I.F.
T19	10-282	17TH I.F.
T20	10-284	18TH I.F.
T21	10-286	19TH I.F.
T22	10-288	20TH I.F.
T23	10-290	21TH I.F.
T24	10-292	22TH I.F.
T25	10-294	23TH I.F.
T26	10-296	24TH I.F.
T27	10-298	25TH I.F.
T28	10-300	26TH I.F.
T29	10-302	27TH I.F.
T30	10-304	28TH I.F.
T31	10-306	29TH I.F.
T32	10-308	30TH I.F.
T33	10-310	31TH I.F.
T34	10-312	32TH I.F.
T35	10-314	33TH I.F.
T36	10-316	34TH I.F.
T37	10-318	35TH I.F.
T38	10-320	36TH I.F.
T39	10-322	37TH I.F.
T40	10-324	38TH I.F.
T41	10-326	39TH I.F.
T42	10-328	40TH I.F.
T43	10-330	41TH I.F.
T44	10-332	42TH I.F.
T45	10-334	43TH I.F.
T46	10-336	44TH I.F.
T47	10-338	45TH I.F.
T48	10-340	46TH I.F.
T49	10-342	47TH I.F.
T50	10-344	48TH I.F.
T51	10-346	49TH I.F.
T52	10-348	50TH I.F.
T53	10-350	51TH I.F.
T54	10-352	52TH I.F.
T55	10-354	53TH I.F.
T56	10-356	54TH I.F.
T57	10-358	55TH I.F.
T58	10-360	56TH I.F.
T59	10-362	57TH I.F.
T60	10-364	58TH I.F.
T61	10-366	59TH I.F.
T62	10-368	60TH I.F.
T63	10-370	61TH I.F.
T64	10-372	62TH I.F.
T65	10-374	63TH I.F.
T66	10-376	64TH I.F.
T67	10-378	65TH I.F.
T68	10-380	66TH I.F.
T69	10-382	67TH I.F.
T70	10-384	68TH I.F.
T71	10-386	69TH I.F.
T72	10-388	70TH I.F.
T73	10-390	71TH I.F.
T74	10-392	72TH I.F.
T75	10-394	73TH I.F.
T76	10-396	74TH I.F.
T77	10-398	75TH I.F.
T78	10-400	76TH I.F.
T79	10-402	77TH I.F.
T80	10-404	78TH I.F.
T81	10-406	79TH I.F.
T82	10-408	80TH I.F.
T83	10-410	81TH I.F.
T84	10-412	82TH I.F.
T85	10-414	83TH I.F.
T86	10-416	84TH I.F.
T87	10-418	85TH I.F.
T88	10-420	86TH I.F.
T89	10-422	87TH I.F.
T90	10-424	88TH I.F.
T91	10-426	89TH I.F.
T92	10-428	90TH I.F.
T93	10-430	91TH I.F.
T94	10-432	92TH I.F.
T95	10-434	93TH I.F.
T96	10-436	94TH I.F.
T97	10-438	95TH I.F.
T98	10-440	96TH I.F.
T99	10-442	97TH I.F.
T100	10-444	98TH I.F.
T101	10-446	99TH I.F.
T102	10-448	100TH I.F.

IF PEAK 455 KC

TUBE SOCKETS ARE VIEWED FROM UNDER SIDE OF CHASSIS.  
VOLTAGE READINGS AT INDICATED SOCKET PRONGS ARE TO CHASSIS.  
VOLTAGES MUST BE MEASURED WITH NO SIGNAL. ALIGNMENT IS TO BE MADE AT THE FREQUENCIES SHOWN AT THE TUNING CONDENSERS.  
WHERE NO VOLTAGE READING IS SHOWN AT SOCKET PRONGS, IT INDICATES ZERO VOLTAGE OR A VERY LOW READING.  
FIGURES AT CATHODES ARE CATHODE CURRENT IN MILLIAMPERES.  
CAPACITY VALUES ARE IN MICROFARADS.



CODE	PART NO.	DESCRIPTION
C1	10-127	.004 MFD. 1000 V. BUFFER COND.
C2	1407	.05
C3	10-128	.004
C4	10-124	.001
C5	10-112	.5
C6	10-120	.25
C7	10-118	.1
C8	10-116	.05
C9	10-112	.0005
C10	10-112	.0005
C11	10-112	.0005
C12	10-112	.0005
C13	10-112	.0005
C14	10-112	.0005
C15	10-112	.0005
C16	10-112	.0005