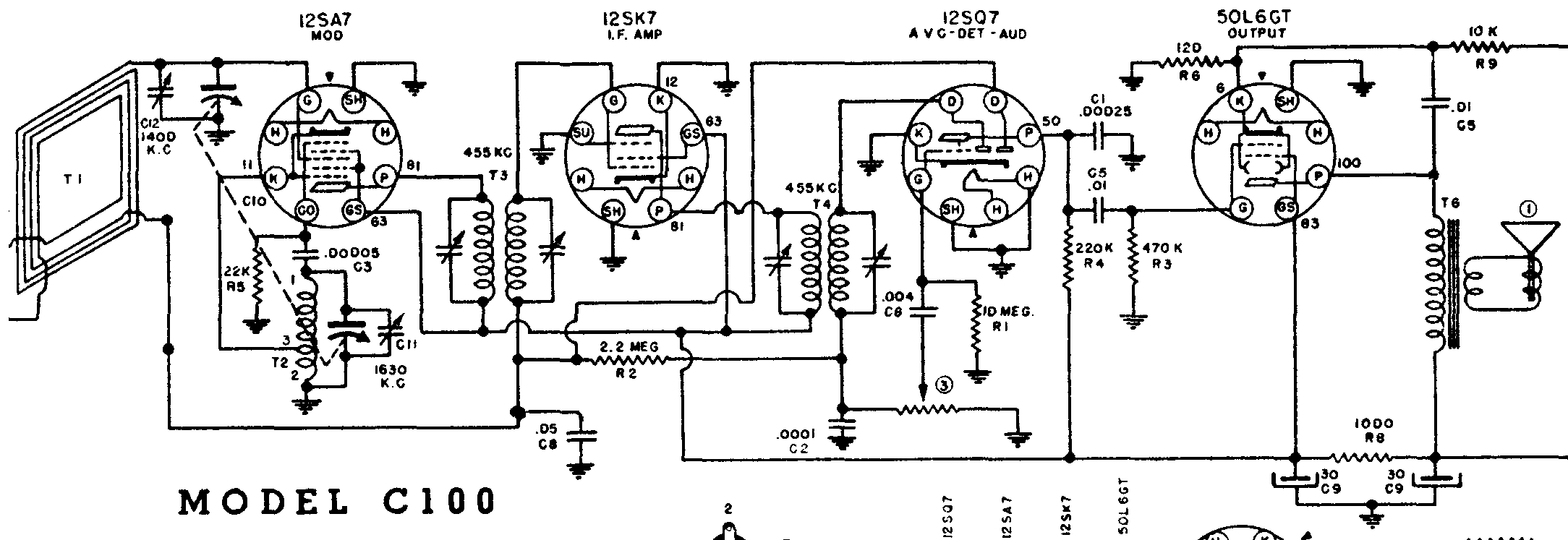
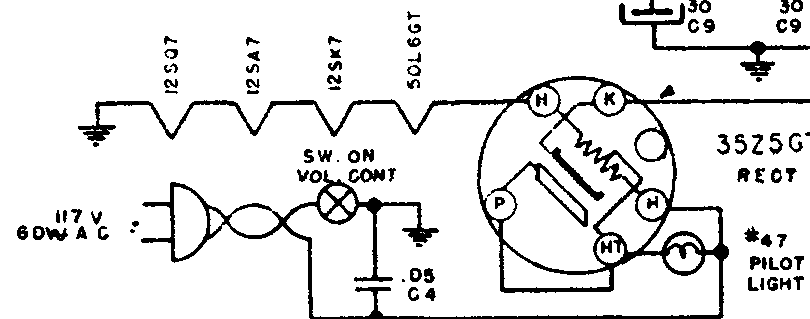
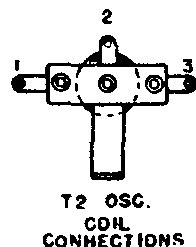


# WARWICK MANUFACTURING CORPORATION



## MODEL C100

TUBE SOCKETS ARE VIEWED FROM UNDERSIDE OF CHASSIS  
VOLTAGE READINGS INDICATED AT SOCKET TERMINAL ARE  
TO CHASSIS WITH 1000 OHM PER VOLT METER, WITH  
NO SIGNAL ON 117 VOLT LINE.  
WHERE NO VOLTAGE IS SHOWN, IT INDICATES ZERO VOLTAGE  
OR A VERY LOW READING  
ALIGNMENT IS TO BE MADE AT THE FREQUENCY SHOWN AT  
EACH TRIMMER CONDENSER  
CAPACITY VALUES ARE IN MICROFARADS.



CODE	PART NO.	DESCRIPTION	CODE	PART NO.	DESCRIPTION
R 1		10 MEGOHM 1/4 WATT RESISTOR	C 1		.00025 MFD MICA CONDENSER
R 2		2.2 " " " "	C 2		.0001 " " " "
R 3		470K " " " "	C 3		.00005 " " " "
R 4		220K " " " "	C 4		.05 MFD. 400V TUBULAR CONDENSER
R 5		22 K " " " "	C 5		.01 " " " "
R 6		120 " " " "	C 6		.004 " " " "
R 7		27 " " " "	C 7		" " " "
R 8		1000 1/2 WATT " "	C 8		.05 " 200 V " "
R 9		10 K 1 WATT " "	C 9	18-266	30 X 30 MFD 150 W V ELECTROLYTIC
			C 10	19-177	2 GANG VARIABLE CONDENSER (ALSO C1 & C12)

Model C101 is similar to C100, but uses a record player.