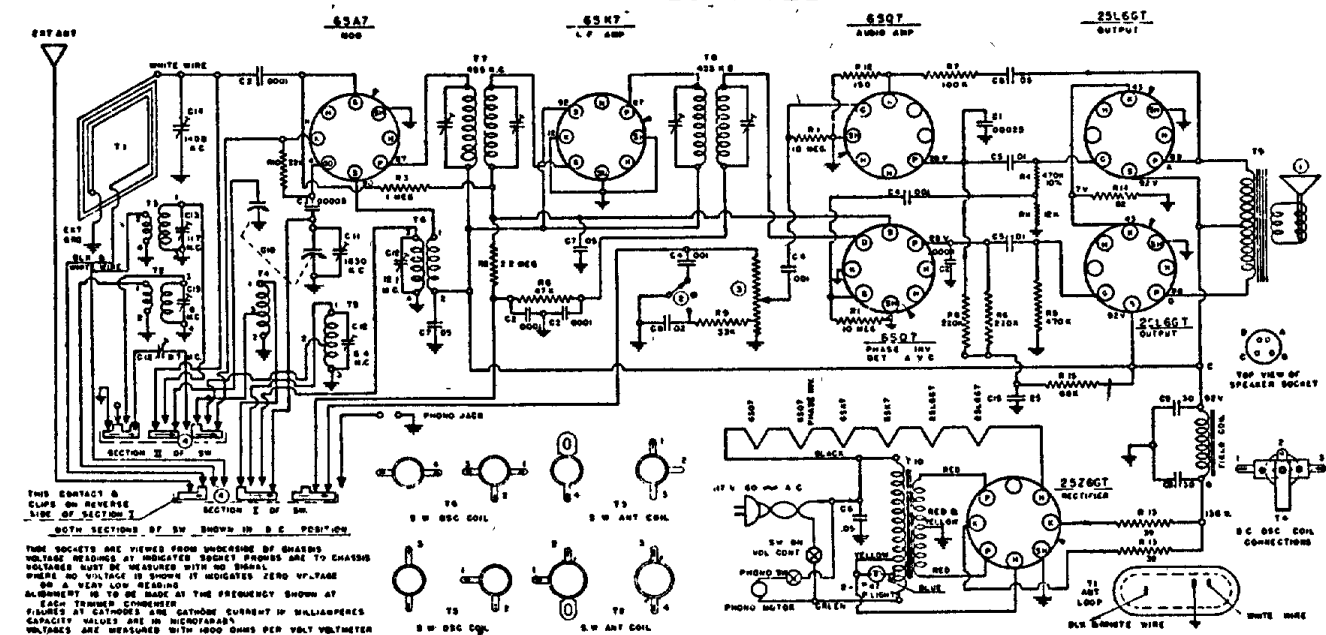


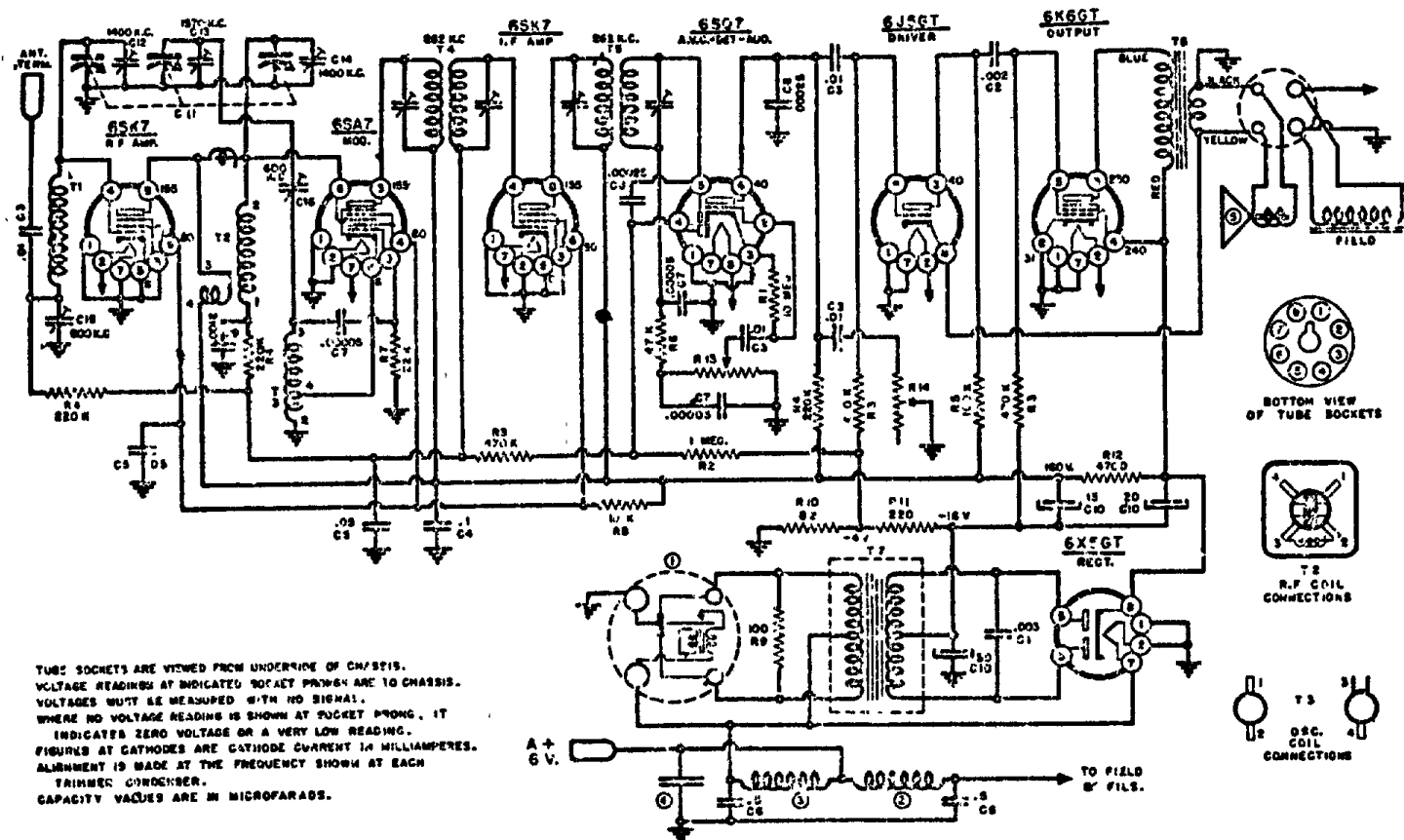
WARWICK MFG. CORP.

MODELS 2-711 TO 2-714



CODE	PART NO	DESCRIPTION	CODE	PART NO	DESCRIPTION	CODE	PART NO	DESCRIPTION
B	80 153	10 MEGOHM 1/4 WATT RESISTOR	C	1504	00025 HIGH MICA CAPACITOR	T	82 33	LOOP ANTENNA
B	80 154	2.2 "	C	1501	00008 " "	T	82 34	ANT. COIL 4.7 TO 2.4 M. S.
B	80 155	" "	C	1503	00005 " "	T	80 40B	ANT. COIL 5 TO 11 M. S.
B	80 156	100K OHM " "	C	1502	00004 " "	T	80 37	OSCILLATOR COIL 1.5 TO 1.0 M. S.
B	80 176	100K OHM " "	C	1505	00001 500 V TUBULAR CAPACITOR	T	80 38	" " " " 4.7 TO 6.6 M. S.
B	80 178	100K OHM " "	C	1507	00001 " "	T	80 39	" " " " TO 6.1 M. S.
B	80 179	100K OHM " "	C	1506	00001 " "	T	80 40	15V 1/2 TRANSFORMER
B	80 180	100K OHM " "	C	1508	00001 " "	T	80 41	500V 1/2 " "
B	80 177	4.7 " "	C	1509	00001 " "	T	80 42	OUTPUT " " (ON SPKR)
B	80 178	12.5 " "	C	1510	30 X 30 MFD 50V M. V. ELECTROLYTIC	T	80 43	POWER " " " "
B	80 179	22 " "	C	1511	500 V VARIABLE POWERED TAPED GIL	T	80 44	" " " " " "
B	80 180	100K OHM " "	C	1512	TRIMMER (ON 1.3 SECTION)	T	80 45	" " " " " "
B	80 181	100K OHM " "	C	1513	TRIMMER (ON LOOP)	T	80 46	" " " " " "
B	80 182	100K OHM " "	C	1514	TRIMMER (ON LOOP)	T	80 47	" " " " " "
B	80 183	100K OHM " "	C	1515	500 V 500 V TUBULAR CAPACITOR	T	80 48	" " " " " "
B	80 184	100K OHM " "	C	1516	500 V 500 V TUBULAR CAPACITOR	T	80 49	" " " " " "
B	80 185	100K OHM " "	C	1517	500 V 500 V TUBULAR CAPACITOR	T	80 50	" " " " " "
B	80 186	100K OHM " "	C	1518	500 V 500 V TUBULAR CAPACITOR	T	80 51	" " " " " "
B	80 187	100K OHM " "	C	1519	500 V 500 V TUBULAR CAPACITOR	T	80 52	" " " " " "
B	80 188	100K OHM " "	C	1520	500 V 500 V TUBULAR CAPACITOR	T	80 53	" " " " " "
B	80 189	100K OHM " "	C	1521	500 V 500 V TUBULAR CAPACITOR	T	80 54	" " " " " "
B	80 190	100K OHM " "	C	1522	500 V 500 V TUBULAR CAPACITOR	T	80 55	" " " " " "
B	80 191	100K OHM " "	C	1523	500 V 500 V TUBULAR CAPACITOR	T	80 56	" " " " " "
B	80 192	100K OHM " "	C	1524	500 V 500 V TUBULAR CAPACITOR	T	80 57	" " " " " "
B	80 193	100K OHM " "	C	1525	500 V 500 V TUBULAR CAPACITOR	T	80 58	" " " " " "
B	80 194	100K OHM " "	C	1526	500 V 500 V TUBULAR CAPACITOR	T	80 59	" " " " " "
B	80 195	100K OHM " "	C	1527	500 V 500 V TUBULAR CAPACITOR	T	80 60	" " " " " "
B	80 196	100K OHM " "	C	1528	500 V 500 V TUBULAR CAPACITOR	T	80 61	" " " " " "
B	80 197	100K OHM " "	C	1529	500 V 500 V TUBULAR CAPACITOR	T	80 62	" " " " " "
B	80 198	100K OHM " "	C	1530	500 V 500 V TUBULAR CAPACITOR	T	80 63	" " " " " "
B	80 199	100K OHM " "	C	1531	500 V 500 V TUBULAR CAPACITOR	T	80 64	" " " " " "
B	80 200	100K OHM " "	C	1532	500 V 500 V TUBULAR CAPACITOR	T	80 65	" " " " " "
B	80 201	100K OHM " "	C	1533	500 V 500 V TUBULAR CAPACITOR	T	80 66	" " " " " "
B	80 202	100K OHM " "	C	1534	500 V 500 V TUBULAR CAPACITOR	T	80 67	" " " " " "
B	80 203	100K OHM " "	C	1535	500 V 500 V TUBULAR CAPACITOR	T	80 68	" " " " " "
B	80 204	100K OHM " "	C	1536	500 V 500 V TUBULAR CAPACITOR	T	80 69	" " " " " "
B	80 205	100K OHM " "	C	1537	500 V 500 V TUBULAR CAPACITOR	T	80 70	" " " " " "
B	80 206	100K OHM " "	C	1538	500 V 500 V TUBULAR CAPACITOR	T	80 71	" " " " " "
B	80 207	100K OHM " "	C	1539	500 V 500 V TUBULAR CAPACITOR	T	80 72	" " " " " "
B	80 208	100K OHM " "	C	1540	500 V 500 V TUBULAR CAPACITOR	T	80 73	" " " " " "
B	80 209	100K OHM " "	C	1541	500 V 500 V TUBULAR CAPACITOR	T	80 74	" " " " " "
B	80 210	100K OHM " "	C	1542	500 V 500 V TUBULAR CAPACITOR	T	80 75	" " " " " "
B	80 211	100K OHM " "	C	1543	500 V 500 V TUBULAR CAPACITOR	T	80 76	" " " " " "
B	80 212	100K OHM " "	C	1544	500 V 500 V TUBULAR CAPACITOR	T	80 77	" " " " " "

CHASSIS 10-72



CODE	PART NO	DESCRIPTION	QTY	PART NO	DESCRIPTION	QTY	PART NO	DESCRIPTION	QTY
R1	60-195	10 MEGOHM	1	C1	18-147	.003 MFD.	1	10-208	ANTENNA COIL
R2	60-195	"	1	C2	18-158	.002 " 400 V	1	10-361	R.F. COIL
R3	60-178	470K OHM	"	C3	18-112	01 " "	1	10-330	OSCILLATOR COIL
R4	60-180	P20K "	"	C4	18-112	" " "	1	10-340	1ST I.F. TRANSFORMER
R5	60-196	100K "	"	C5	16-112	.05 " 500 V.	1	10-212	2ND I.F. "
R6	60-187	47K "	"	C6	18-112	" " "	1	60-201	OUTPUT TRANSFORMER
R7	6C-395	21K "	"	C7	1503	.00005 MICA CONDENSER	1	60-202	VIBRATOR TRANSFORMER
R8	60-215	10K "	"	C8	1504	.00025 " "	1		
R9	60-182	100 " 1/2 WATT	"	C9	18-109	.001 " "	1	34-104	VIBRATOR
R10	60-483	"	"				2	33-210	FILAMENT CHOKES
R11	60-531	220 " 1 WATT	"	C10	18-264	15 " 500 V.	1	33-211	VIBRATOR CHOKES
R12	60-646	4700 " 2 WATT	"				4	89-1	SPARK PLATE
R13	84-103	300K " VOLUME CONTROL	"	C11	18-108	3 PHASE VARIABLE COND. (ALSO CR. C13, & C14)	1	78-302	5" DYNAMIC SPEAKER
R14	85-103	300K " TONE CONTROL	"	C12	20-116	PADRING CONDENSER 500 - 1500 MMFD.			
				C13	20-130	PADRING CONDENSER 350 - 550 MMFD.			