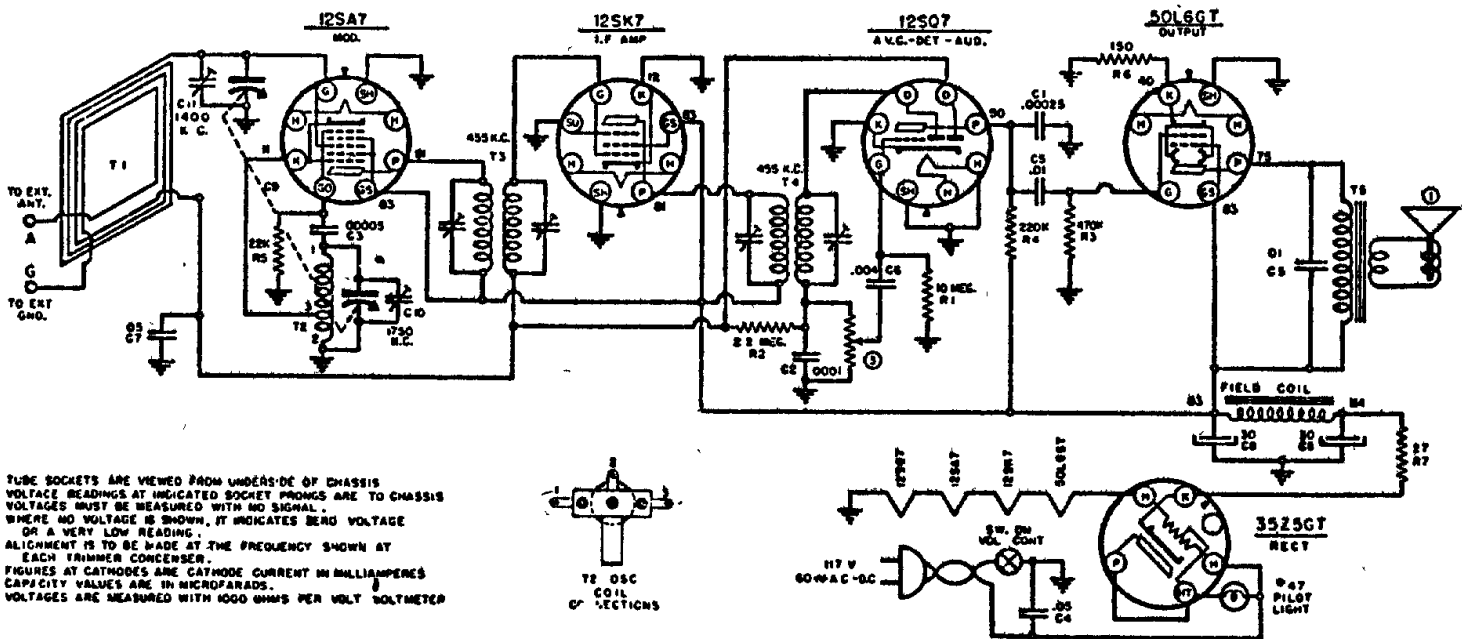
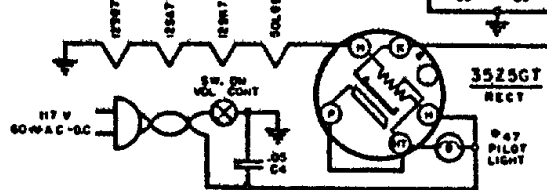
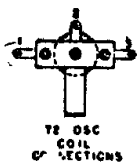


# WARWICK MFG. CORP.

## MODELS 2-530 TO 2-539

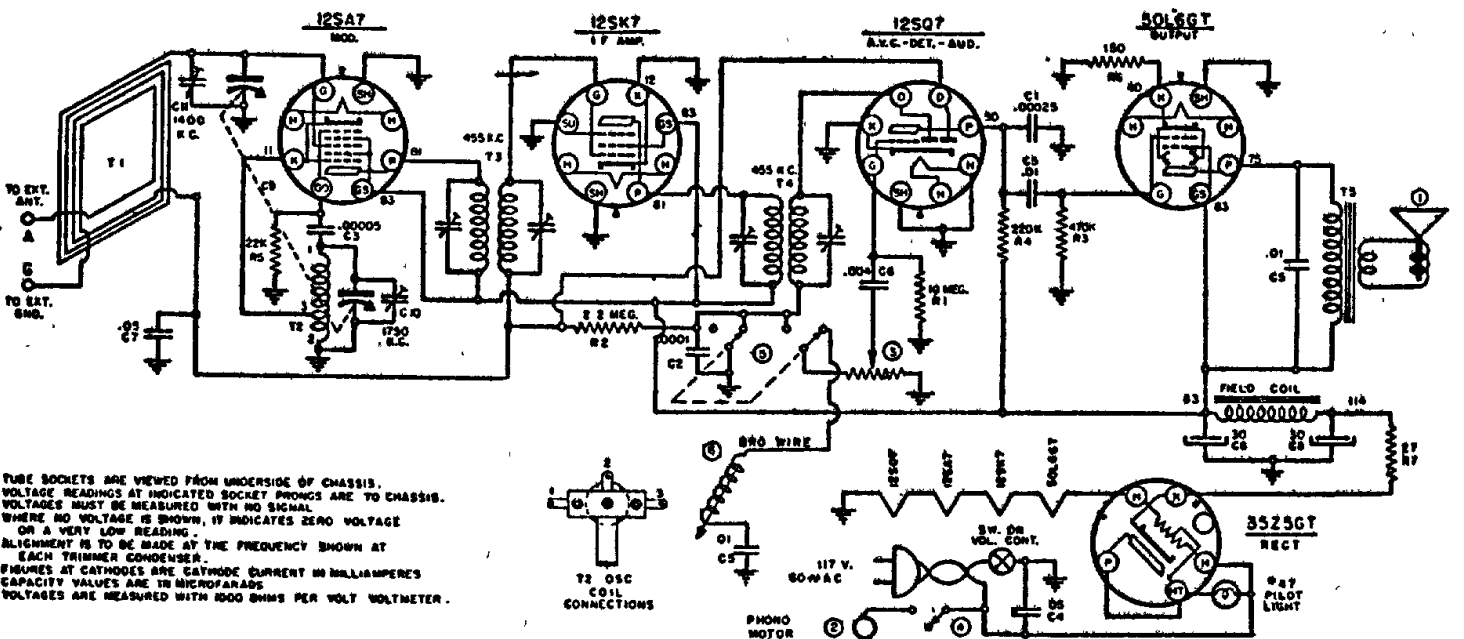


TUBE SOCKETS ARE VIEWED FROM UNDERSIDE OF CHASSIS. VOLTAGE READINGS AT INDICATED SOCKET PRONGS ARE TO CHASSIS. VOLTAGES MUST BE MEASURED WITH NO SIGNAL. WHERE NO VOLTAGE IS SHOWN, IT INDICATES ZERO VOLTAGE OR A VERY LOW READING. ALIGNMENT IS TO BE MADE AT THE FREQUENCY SHOWN AT EACH TRIMMER CONDENSER. FIGURES AT CATHODES ARE CATHODE CURRENT IN MILLIAMPERES. CAPACITY VALUES ARE IN MICROFARADS. VOLTAGES ARE MEASURED WITH 1000 OHMS PER VOLT VOLTMETER.

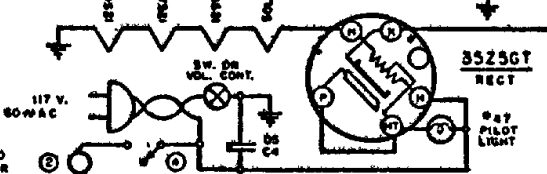
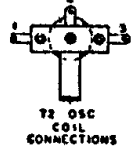


CODE	PART NO.	DESCRIPTION	CODE	PART NO.	DESCRIPTION	CODE	PART NO.	DESCRIPTION	2-53
R1	60-193	10 MEGOHM 1/4 WATT RESISTOR	C1	1504	.0025 MFD. MICA CONDENSER	T1	82-30	LOOP ANTENNA	
R2	60-179	22K	C2	1501	.0001	T2	80-394	OSCILLATOR COIL	
R3	60-178	470K OHM	C3	1503	.00005	T3	80-369	1ST I.F. TRANSFORMER	
R4	60-180	220K	C4	1607	.05 MFD. 400 V. TUBULAR CONDENSER	T4	80-370	2ND I.F. TRANSFORMER	
R5	60-185	22K	C5	16-119	.01	T5		OUTPUT TRANSFORMER (8W SPKR)	
R6	60-184	150	C6	16-125	.004				
R7	60-551	27	C7	1622	.05 200 V.				
			C8	18-266	30 X 30 MFD. 150 W.V. ELECTROLYTIC				
			C9	19-177	2 GANG VARIABLE CONDENSER (ALSO GRID SHIELD)				

## MODELS 2-550 TO 2-559



TUBE SOCKETS ARE VIEWED FROM UNDERSIDE OF CHASSIS. VOLTAGE READINGS AT INDICATED SOCKET PRONGS ARE TO CHASSIS. VOLTAGES MUST BE MEASURED WITH NO SIGNAL. WHERE NO VOLTAGE IS SHOWN, IT INDICATES ZERO VOLTAGE OR A VERY LOW READING. ALIGNMENT IS TO BE MADE AT THE FREQUENCY SHOWN AT EACH TRIMMER CONDENSER. FIGURES AT CATHODES ARE CATHODE CURRENT IN MILLIAMPERES. CAPACITY VALUES ARE IN MICROFARADS. VOLTAGES ARE MEASURED WITH 1000 OHMS PER VOLT VOLTMETER.



CODE	PART NO.	DESCRIPTION	CODE	PART NO.	DESCRIPTION	CODE	PART NO.	DESCRIPTION	2-55
R1	60-193	10 MEGOHM 1/4 WATT RESISTOR	C1	1504	.0025 MFD. MICA CONDENSER	T1	82-30	LOOP ANTENNA	
R2	60-179	22K	C2	1501	.0001	T2	80-394	OSCILLATOR COIL	
R3	60-178	470K OHM	C3	1503	.00005	T3	80-369	1ST I.F. TRANSFORMER	
R4	60-180	220K	C4	1607	.05 MFD. 400 V. TUBULAR CONDENSER	T4	80-370	2ND I.F. TRANSFORMER	
R5	60-185	22K	C5	16-119	.01	T5		OUTPUT TRANSFORMER (8W SPKR)	
R6	60-184	150	C6	16-125	.004				
R7	60-551	27	C7	1622	.05 200 V.				
			C8	18-266	30 X 30 MFD. 150 W.V. ELECTROLYTIC				
			C9	19-177	2 GANG VARIABLE CONDENSER (ALSO GRID SHIELD)				
				83-216	PHONO PICK-UP				