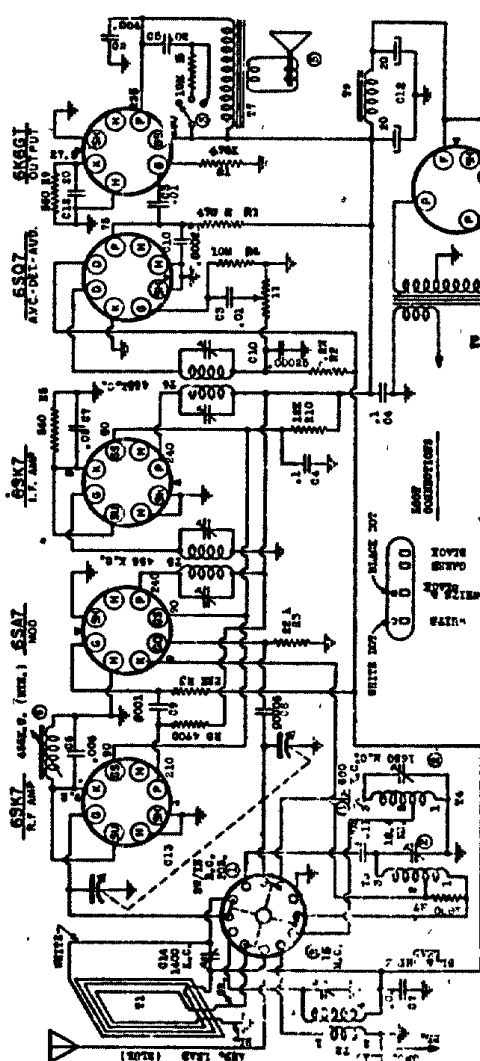


**MODEL 1-61**

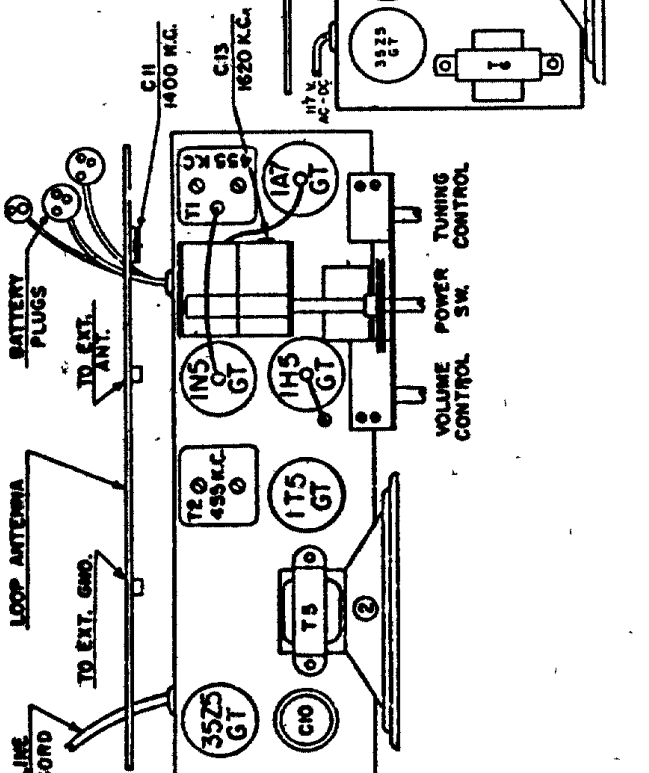


1. THE FOLLOWING INFORMATION IS FOR THE USE OF THE  
 2. OFFICE OF THE ATTORNEY GENERAL, AND IS NOT TO BE  
 3. DISCLOSED TO THE PUBLIC.  
 4. THE INFORMATION IS FOR THE USE OF THE  
 5. OFFICE OF THE ATTORNEY GENERAL, AND IS NOT TO BE  
 6. DISCLOSED TO THE PUBLIC.  
 7. THE INFORMATION IS FOR THE USE OF THE  
 8. OFFICE OF THE ATTORNEY GENERAL, AND IS NOT TO BE  
 9. DISCLOSED TO THE PUBLIC.  
 10. THE INFORMATION IS FOR THE USE OF THE  
 11. OFFICE OF THE ATTORNEY GENERAL, AND IS NOT TO BE  
 12. DISCLOSED TO THE PUBLIC.

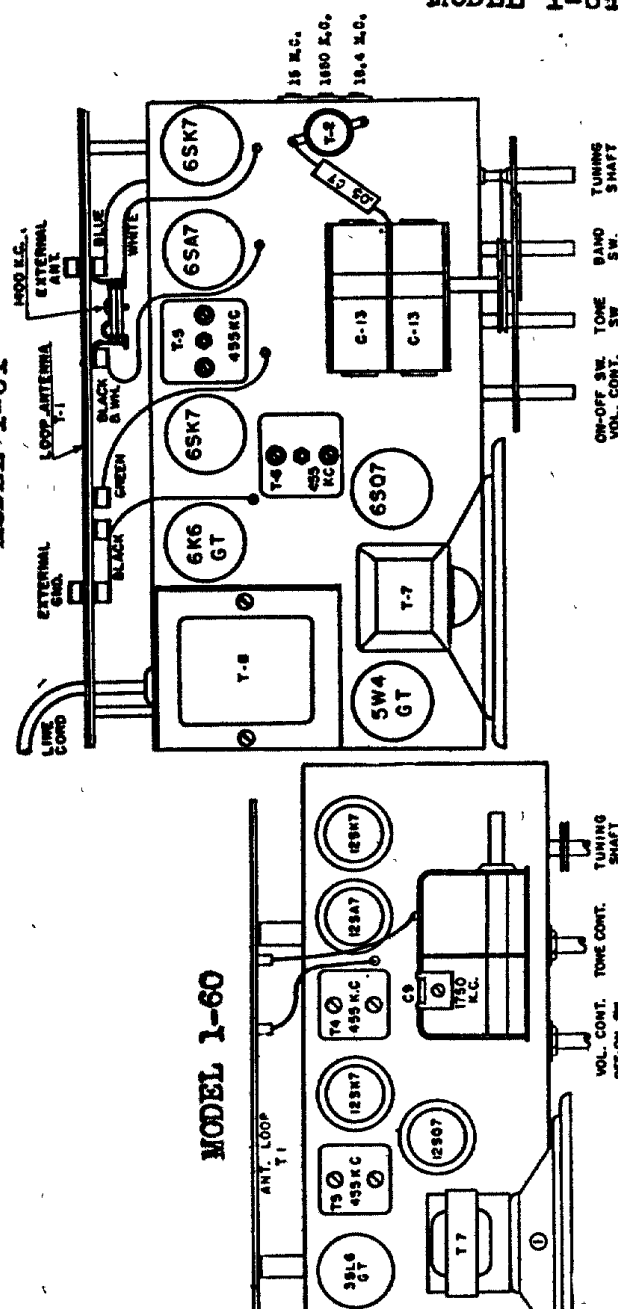
CODE	REF NO.	DESCRIPTION	CODE	PART NO.	2-SEC. TIME	CODE	PART NO.	DESCRIPTION
B1	60-176	470 G 8M 1/4 WATT 25K	01	1007	0-8 WPT.	00	400 WPT.	1007 ARTSRIA COIL
B2	60-176	470 G 8M 1/4 WATT 25K	C15	18-116	"	"	"	1008 ARTSRIA COIL
B3	60-176	470 G 8M 1/4 WATT 25K	C15	18-116	"	"	"	1009 ARTSRIA COIL
B4	60-176	470 G 8M 1/4 WATT 25K	04	18-116	"	"	"	1010 ARTSRIA COIL
B5	60-176	470 G 8M 1/4 WATT 25K	05	18-116	"	"	"	1011 ARTSRIA COIL
B6	60-176	470 G 8M 1/4 WATT 25K	06	18-116	"	"	"	1012 ARTSRIA COIL
B7	60-217	1000 GEM 1/4 WATT 25K	07	1682	0-8 WPT.	00	400 WPT.	1013 ARTSRIA COIL
B8	60-228	4700 GEM 1/4 WATT 25K	08	1803	0-0008 WPT.	00	400 WPT.	1014 ARTSRIA COIL
B9	60-228	4700 GEM 1/4 WATT 25K	09	1803	0-0008 WPT.	00	400 WPT.	1015 ARTSRIA COIL
B10	60-245	15 G 8M 2 WATT 25K	C10	1804	0-0018 WPT.	00	400 WPT.	1016 ARTSRIA COIL
B11	60-346	7000						

Diagram illustrating the circuit components and connections for a radio receiver, including:

- Power Supply Section:**
  - 35Z5 GT (Rectifier Tube)
  - 120 450 KC. (Capacitor)
  - 1T5 GT (Tuning Indicator Tube)
  - 1H5 GT (Volume Control Tube)
- Tuning Section:**
  - 1A7 GT (Tuning Indicator Tube)
  - 1H5 GT (Volume Control Tube)
- Volume Control Section:**
  - 1T5 GT (Volume Control Tube)
  - 1H5 GT (Volume Control Tube)
- Antenna Section:**
  - LOOP ANTENNA
  - TO EXT. GND.
- Power Section:**
  - BATTERY PLUGS
  - TO EXT. ANT.
- Controls:**
  - VOLUME CONTROL SW.
  - TUNING POWER CONTROL



**MODEL 1-60**



**VOL. CONT. TONE CONT. TUNING SHAFT**

**MODEL 1-61**