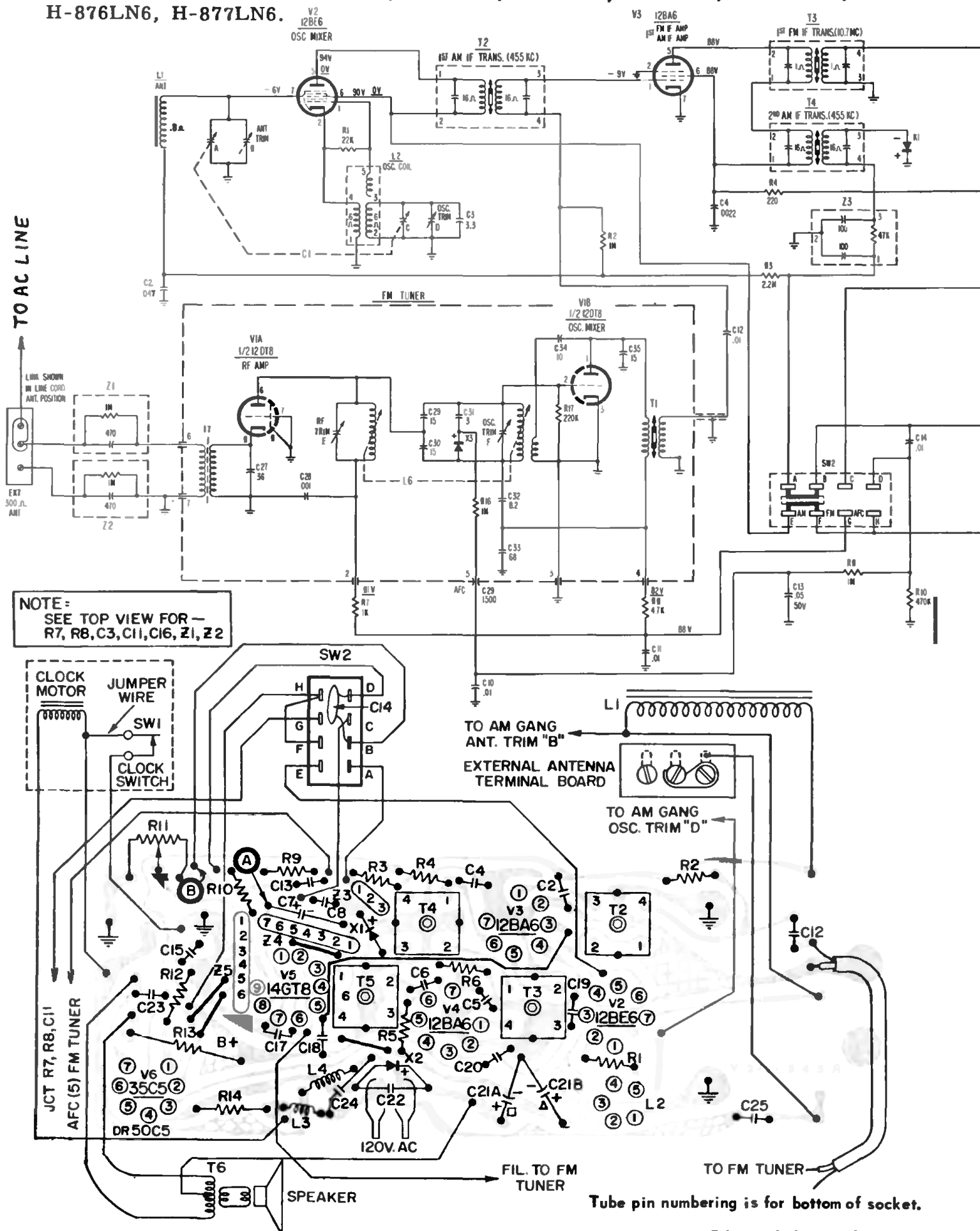
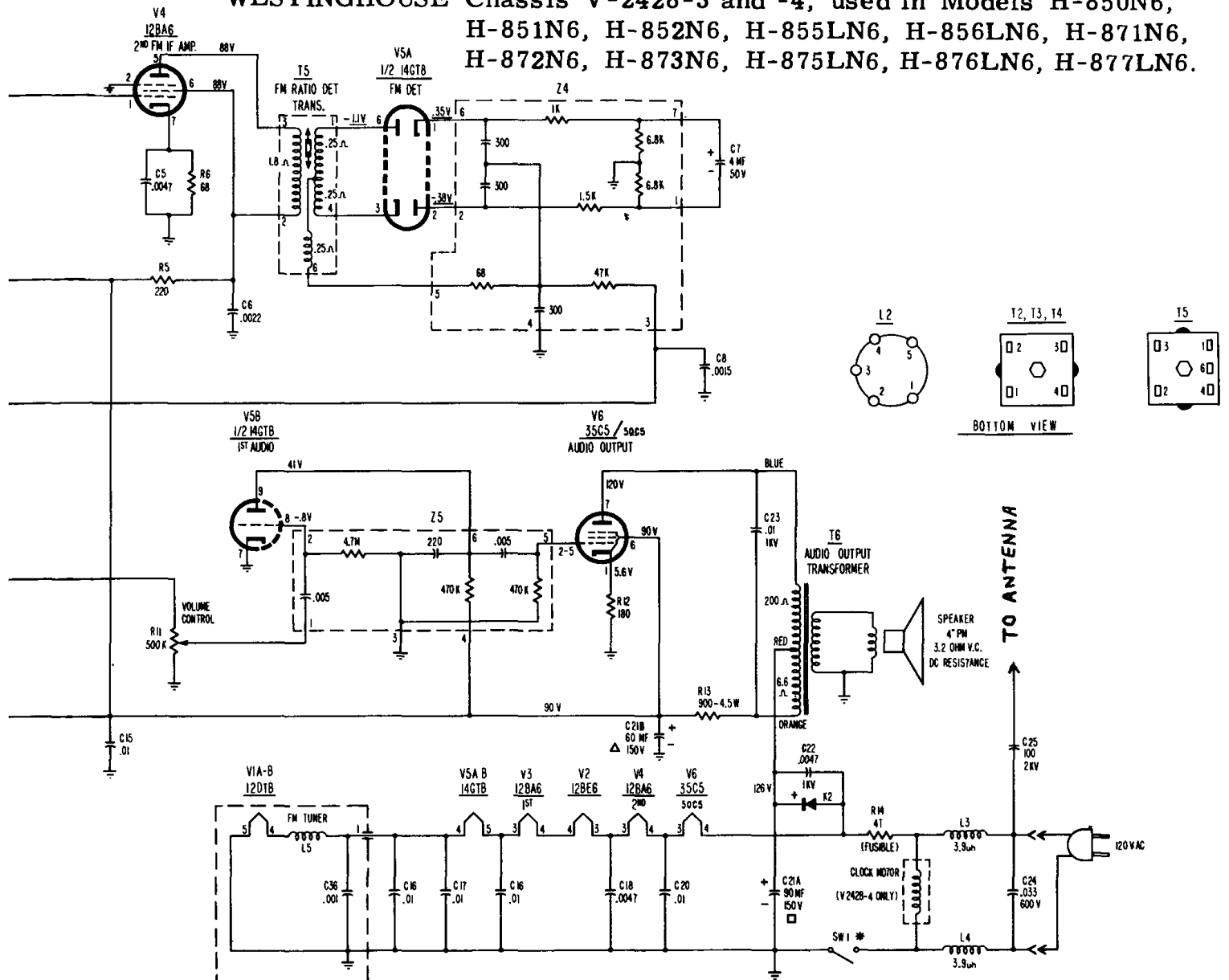


WESTINGHOUSE Chassis V-2428-3 and -4, used in Models H-850N6, H-851N6, H-852N6, H-855LN6, H-856LN6, H-871N6, H-872N6, H-873N6, H-875LN6, H-876LN6, H-877LN6.

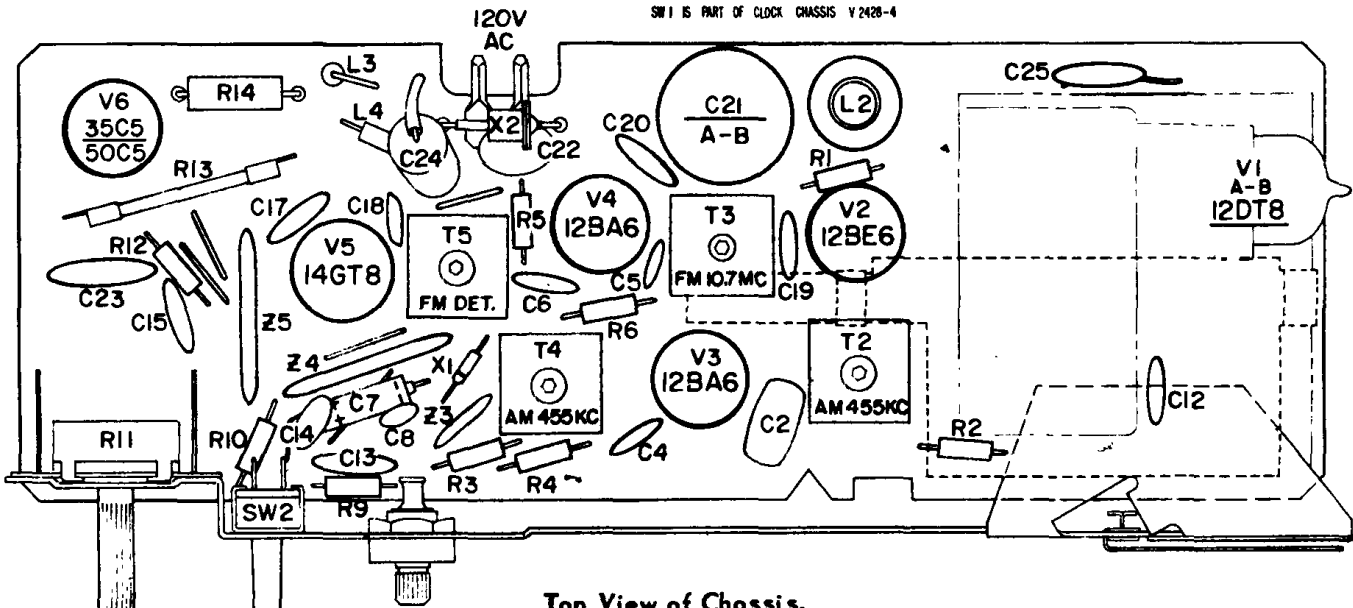


WESTINGHOUSE Chassis V-2428-3 and -4, used in Models H-850N6, H-851N6, H-852N6, H-855LN6, H-856LN6, H-871N6, H-872N6, H-873N6, H-875LN6, H-876LN6, H-877LN6.



NOTES:

1. ALL CAPACITANCE VALUES LESS THAN 1(ONE) ARE IN PF AND VALUES GREATER THAN 1(ONE) ARE IN PF (PICOFARAD). ALL RESISTANCE VALUES ARE IN OHMS 1/2 WATT UNLESS OTHERWISE INDICATED.
 2. VOLTAGES TAKEN WITH A VTVM FROM POINTS INDICATED TO B-, TUNING CAPACITOR AT MAXIMUM, VOLUME CONTROL AT MINIMUM, LINE VOLTAGE AT 120 V. AC NO SIGNAL INPUT. SW 2 IN AM POSITION. UNDERLINED VOLTAGES SW 2 IN FM POSITION.
- * SW 1 IS PART OF VOLUME CONTROL CHASSIS V 2428-3
SW 1 IS PART OF CLOCK CHASSIS V 2428-4



Top View of Chassis.