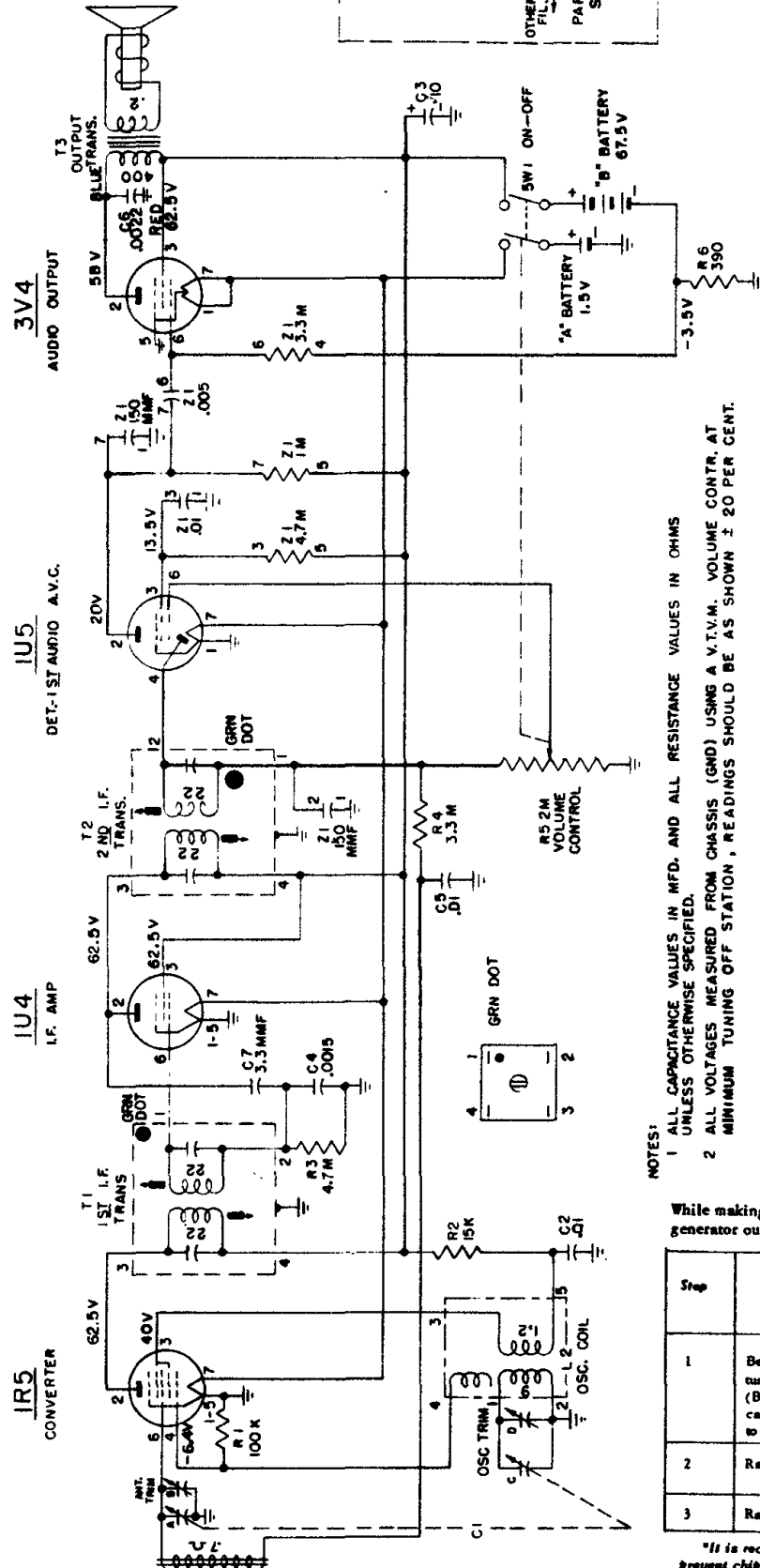
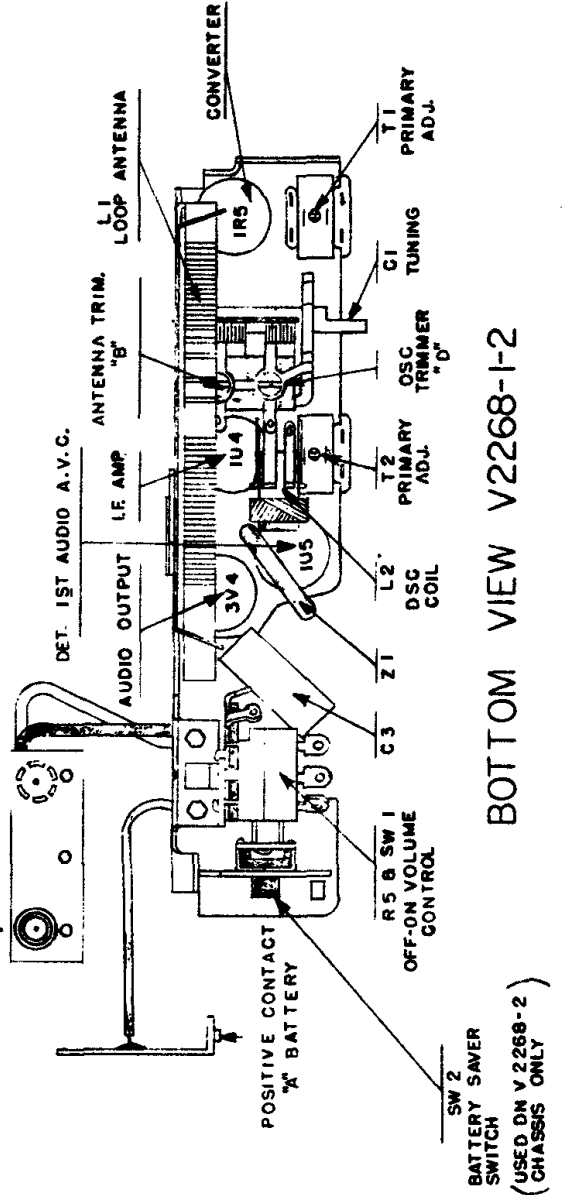
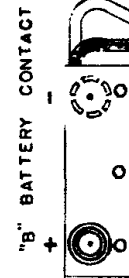
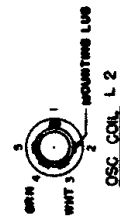


# Westinghouse

Models H-562P4, -A, H-563P4, -A,  
H-564P4, -A, and H-565P4,  
Using Chassis V-2268-1, -2, -3, -4



- NOTES:
- 1 ALL CAPACITANCE VALUES IN MFD. AND ALL RESISTANCE VALUES IN OHMS UNLESS OTHERWISE SPECIFIED.
  - 2 ALL VOLTAGES MEASURED FROM CHASSIS (GND) USING A V.T.V.M. VOLUME CONTR. AT MINIMUM TUNING OFF STATION, READINGS SHOULD BE AS SHOWN  $\pm 20$  PER CENT.



## ALIGNMENT

While making the following adjustments, keep the volume control set for maximum output and the signal generator output attenuated to avoid AVC act. Align in "normal" position of battery saver switch.

Step	Connect Signal Generator	Signal Generator Frequency Med. 400 Cycles	Radio Dial	Connect VTVM Across Voice Coil and Adjust for Maximum Output.
1	Between Stator of R-F tuning capacitor (A) and (B), through a .01 mfd. capacitor and low side to ground.	455 kc.	minimum capacity	Top and bottom slugs in 2nd and 1st I-F trans. in order given, *
2	Radiated Signal	1625 kc.	minimum capacity	Osc. trimmer (D)
3	Radiated Signal	1400 kc.	1400 kc.	Ant. trimmer (B)

\*It is recommended that a fiber aligning tool that snugly fits the slot in the powdered iron core be used to prevent chipping of the slot.

BOTTOM VIEW V2268-1-2

(USED ON V2268-2)  
(CHASSIS ONLY)