

Westinghouse

CHASSIS V-2239-1, MODELS, H-523T4, H-524T4, H-525T4

(BLACK)

(IVORY)

(CORAL)

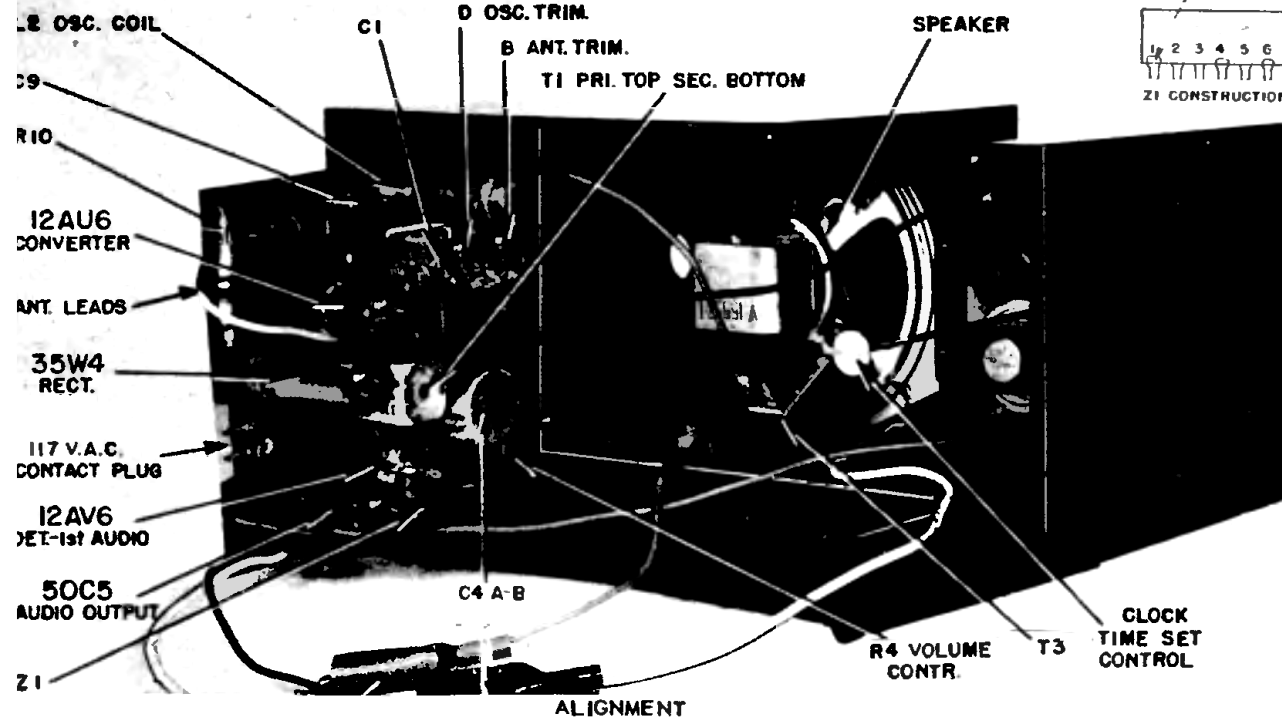
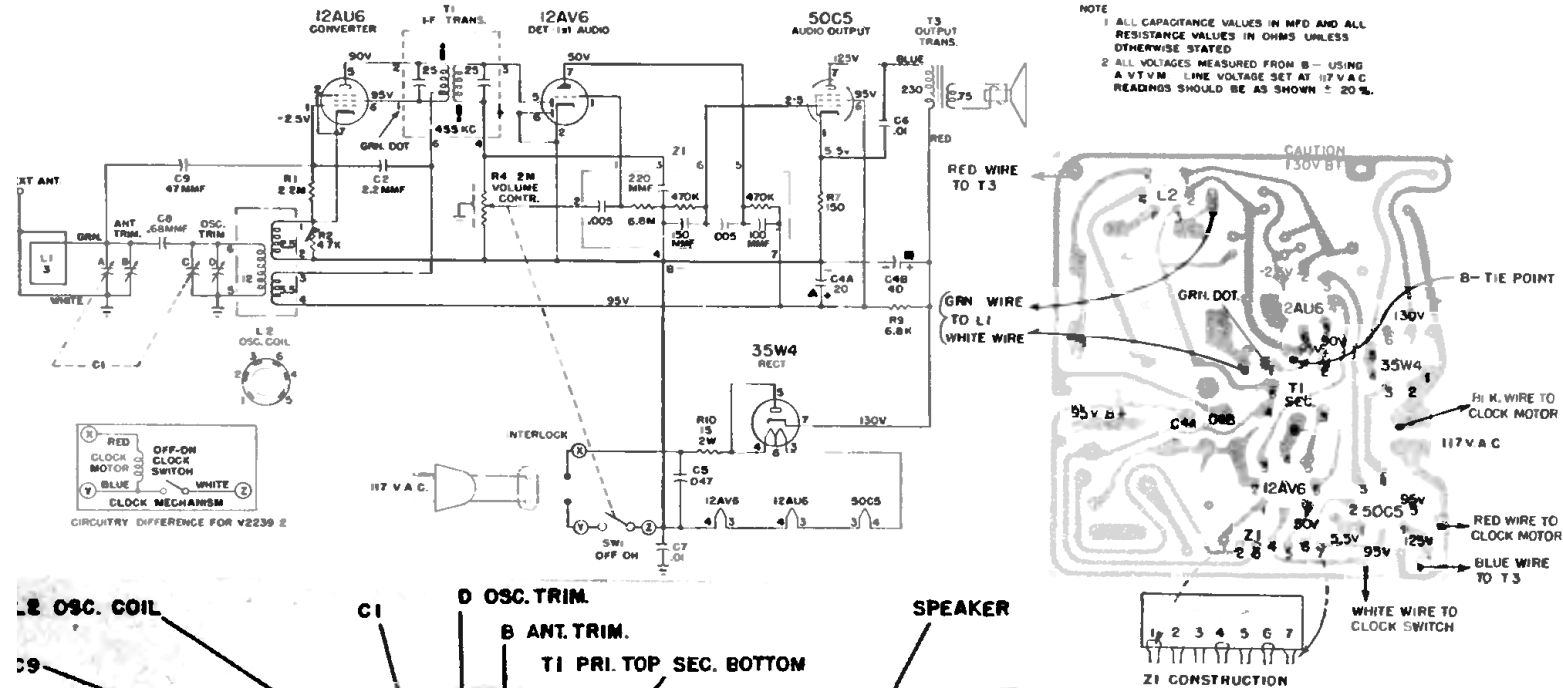
CHASSIS V-2239-2, MODELS, H-538T4, H-539T4, H-540T4

(BLACK)

(IVORY)

(CORAL)

The V-2239-1 chassis is basically the same as the V-2239-2 chassis, except that a clock is used with the V-2239-2 chassis and not with the V-2239-1. In the V-2239-1 chassis the off-on switch is ganged with the volume control and in the V-2239-2 chassis the off-on switch is part of the clock mechanism.



To remove the printed board from the cabinet, remove the front control knobs then remove the screw mounting the printed board to the front of the cabinet. Remove the back cover, interlock and mounting button. Unsolder the blue lead from the output transformer and the white lead from the clock. The printed board can now be removed from the cabinet.

It is recommended that the chassis be isolated from the power line by means of an isolation transformer. While making the following adjustments, keep the volume control set for maximum output and the signal generator output attenuated as much as possible. Connect VTVM across voice coil.

Step	Connect Signal Generator To:	Signal Generator Frequency	Tuning Capacitor	Adjust for Maximum Output
1.	Stator of tuning capacitor (A) through 0200 mmfd. capacitor and low side to B-.	455KC 400 Cycle 30% mod.	Minimum capacity	Top and bottom slugs of T1
2.	Radiated signal	1625KC	Minimum capacity	Oscillator trimmer (D)
3.	Radiated signal	1400KC	1400KC	Antenna trimmer (B)