

WESTINGHOUSE

MODELS

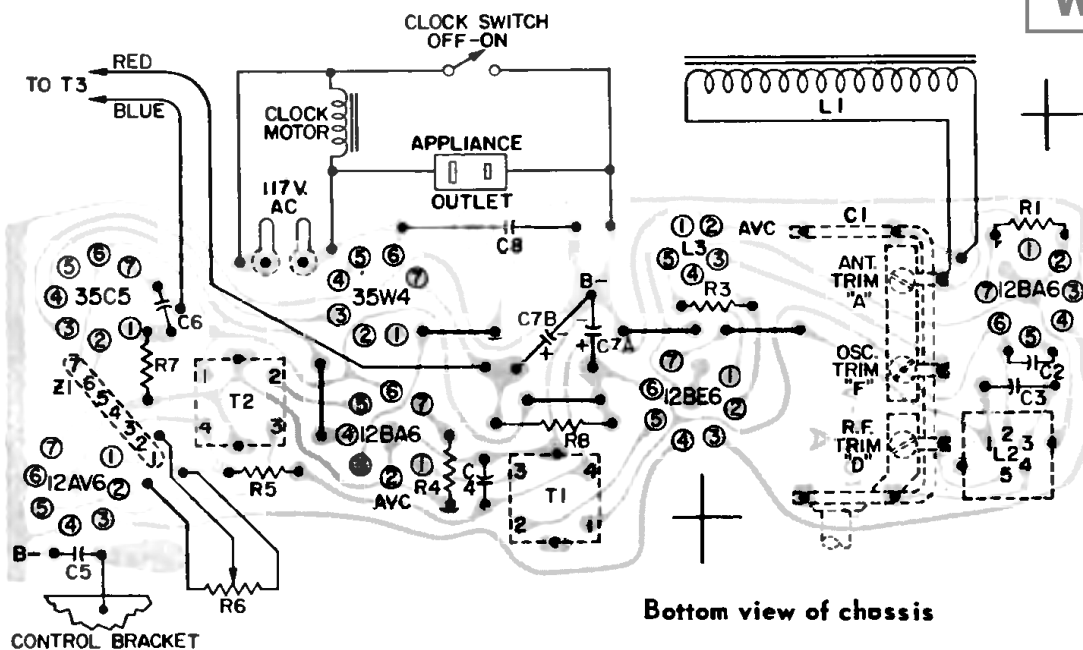
H-722T6

(Cameo beige/mocha)

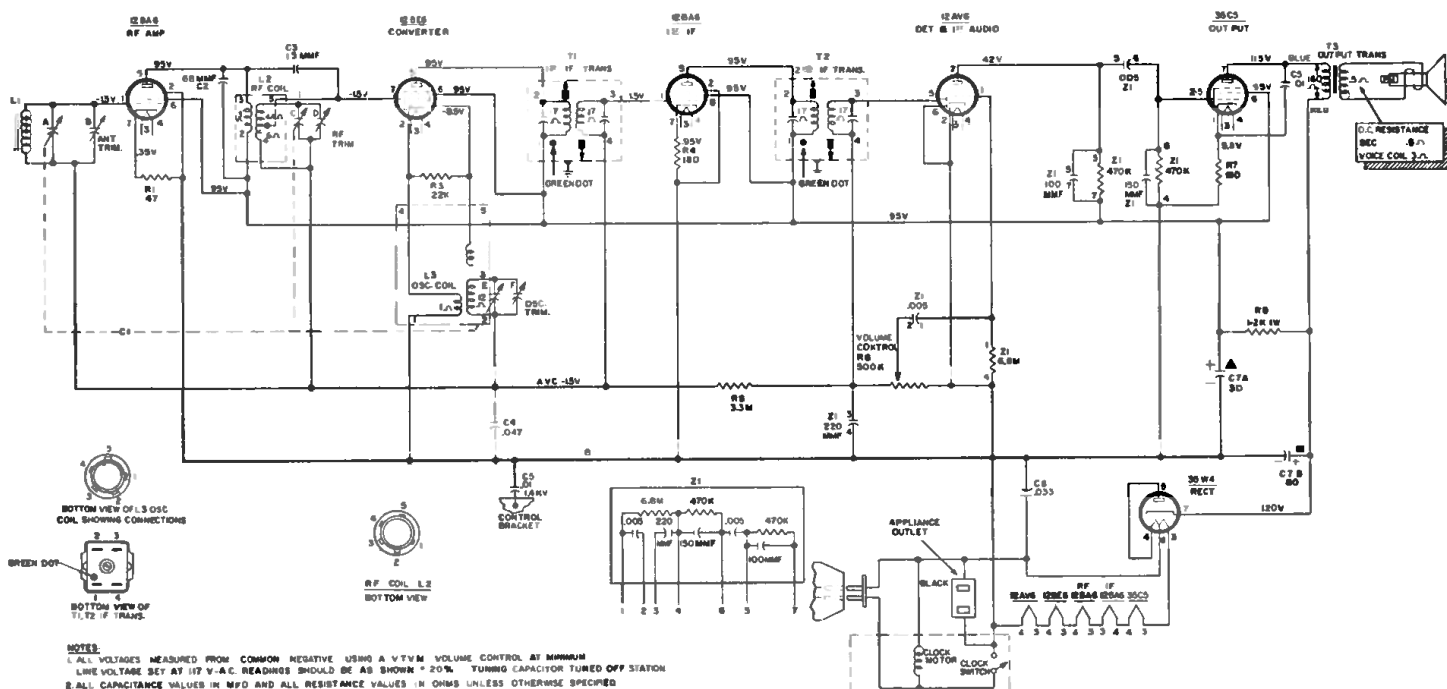
H-723T6

(Pink/Charcoal)

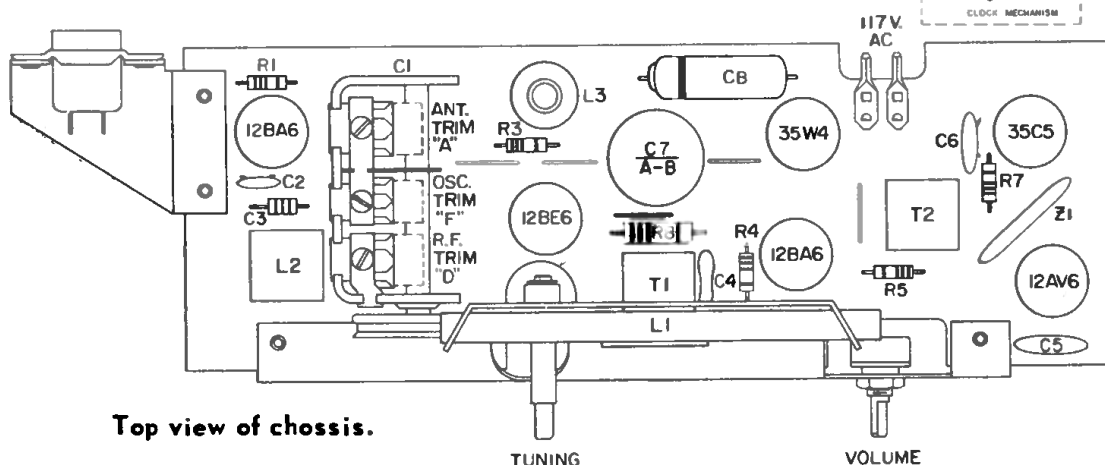
CHASSIS V-2401-2



Bottom view of chassis



NOTES:
1. ALL VOLTAGES MEASURED FROM COMMON NEGATIVE USING A VTVM VOLUME CONTROL AT MINIMUM
LINE VOLTAGE SET AT 117 V-A.C. READINGS SHOULD BE AS SHOWN $\pm 20\%$ TUNING CAPACITOR TUNED OFF STATION
2. ALL CAPACITANCE VALUES IN MFD AND ALL RESISTANCE VALUES IN OHMS UNLESS OTHERWISE SPECIFIED



Top view of chossis.

TUNING

VOLUME

Frequency Range 540 to 1600KC
Intermediate Frequency 455KC

CHASSIS REMOVAL

1. Remove four screws, two from top corners on cabinet back and two from cabinet bottom.
2. Slide cabinet front and attached chassis out from cabinet.

