

Westinghouse

MODELS

H-718T5

(Turquoise/White)

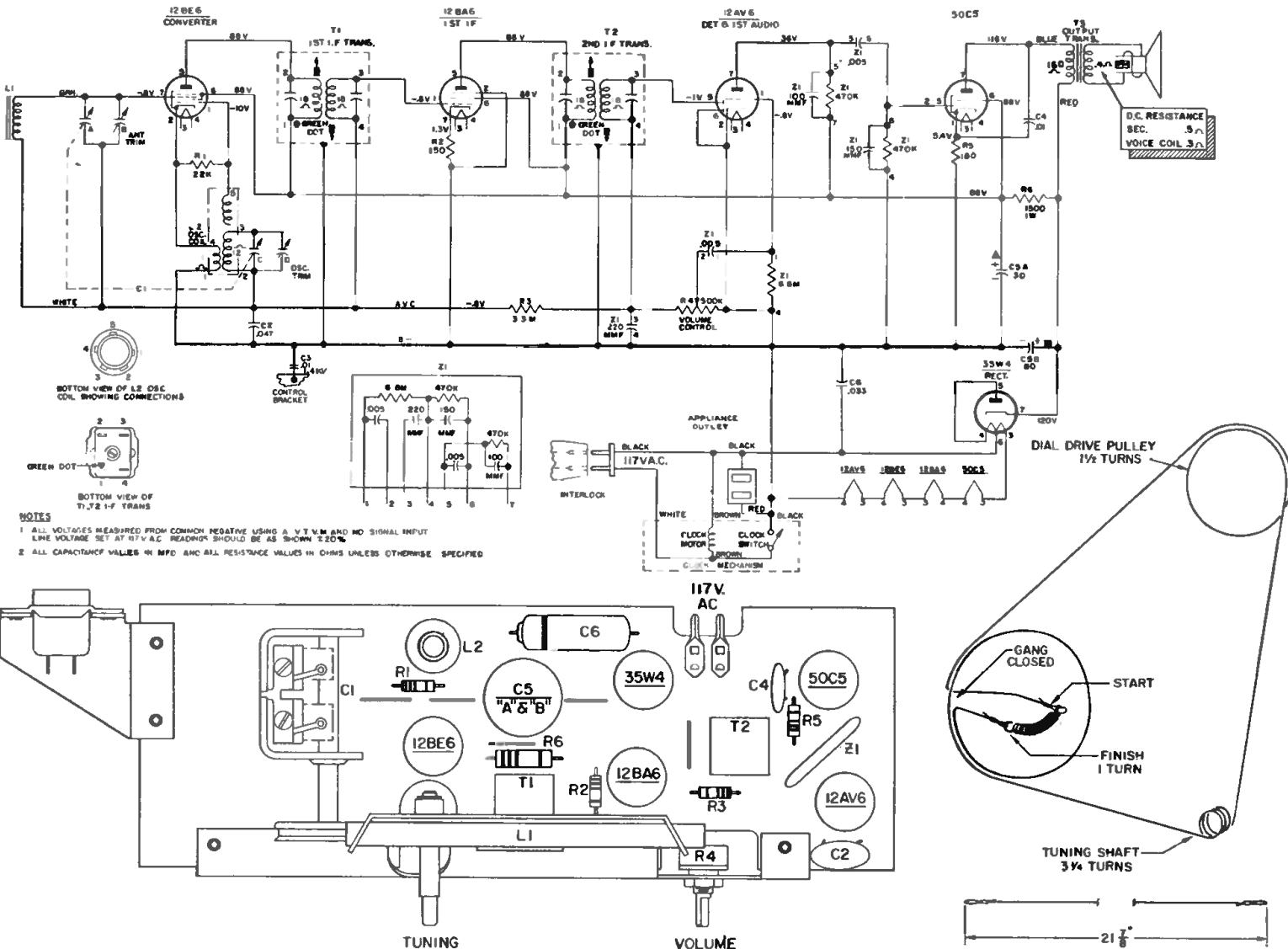
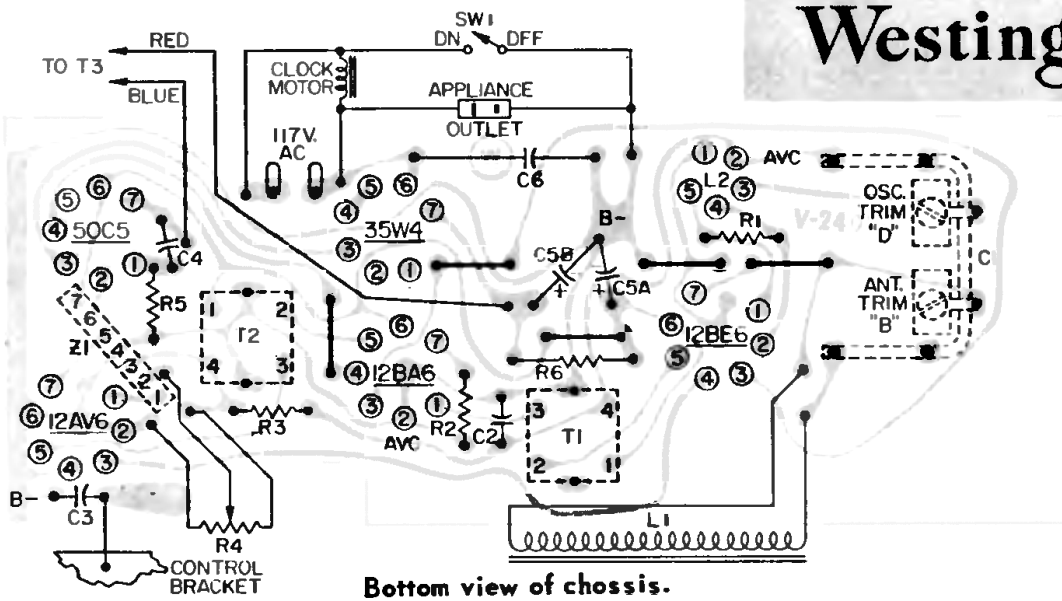
H-719T5

(Ivory/White)

H-720T5

(Coral/White - Pink/White)

CHASSIS V-2401-1



While making the following adjustments, keep the volume control set for maximum output and the signal generator output attenuated to weakest usable signal level.

Step	Connect Signal Generator to -	Signal Gen. Frequency	Radio Dial	Connect VTVM Across Voice Coil and Adjust for Maximum Output -
1	Stator of ant. tuning capacitor (A) through a 200 mmf capacitor.	455 KC 400 Cps. 30% Mod.	Minimum capacity	Top and bottom slugs of T2 and T1.
2	Radiated signal	1625 KC	Minimum capacity	Oscillator trimmer (D)
3	Radiated signal	1400 KC	1400 KC	Antenna trimmer (B)

WESTINGHOUSE

MODELS

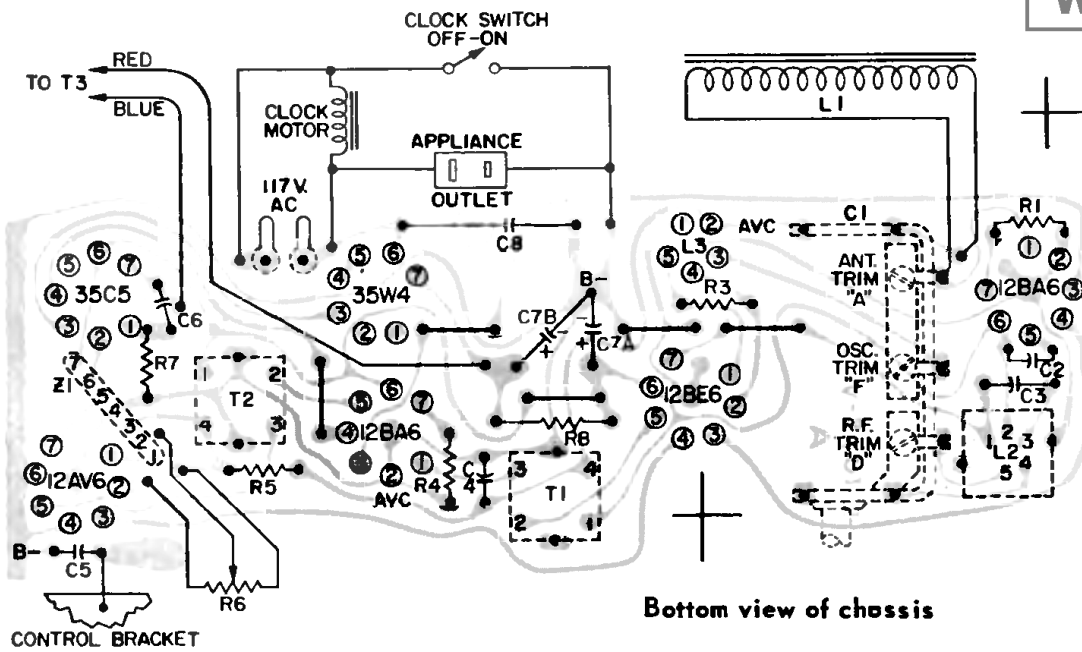
H-722T6

(Cameo beige/mocha)

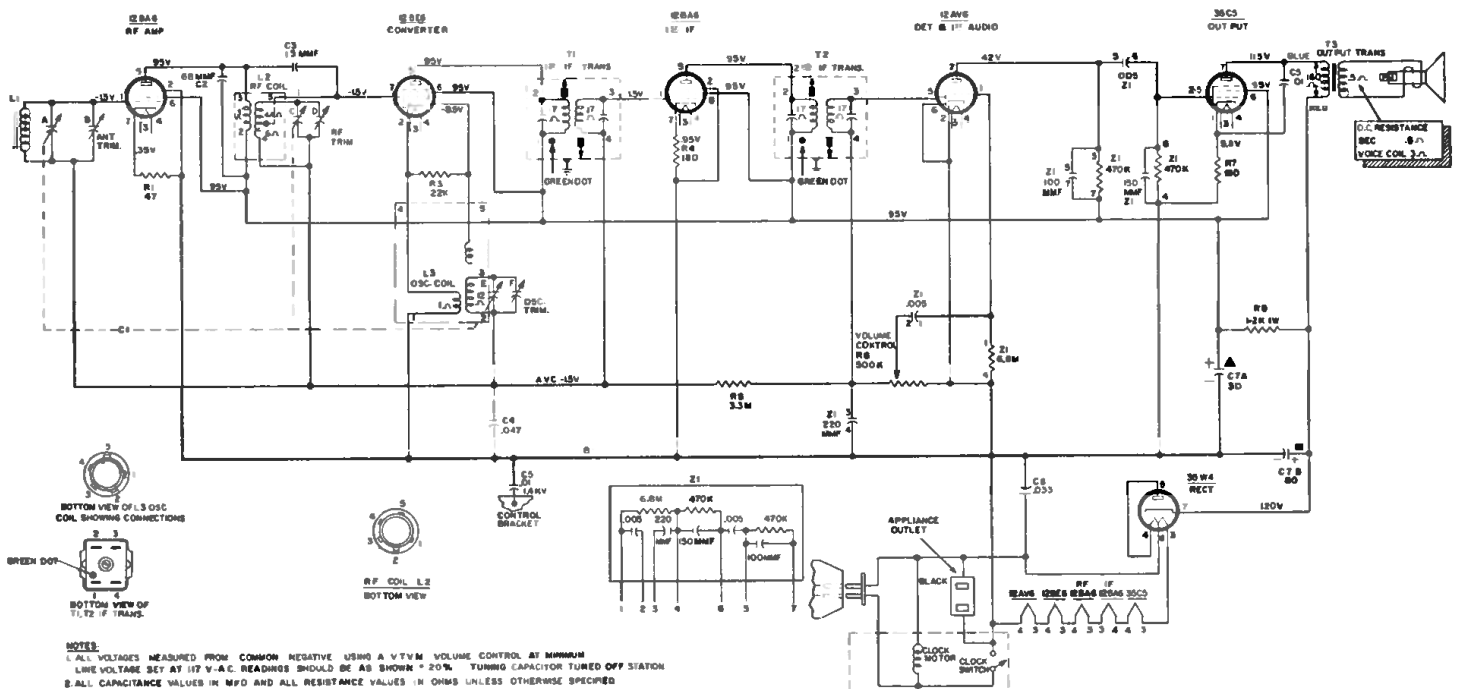
H-723T6

(Pink/Charcoal)

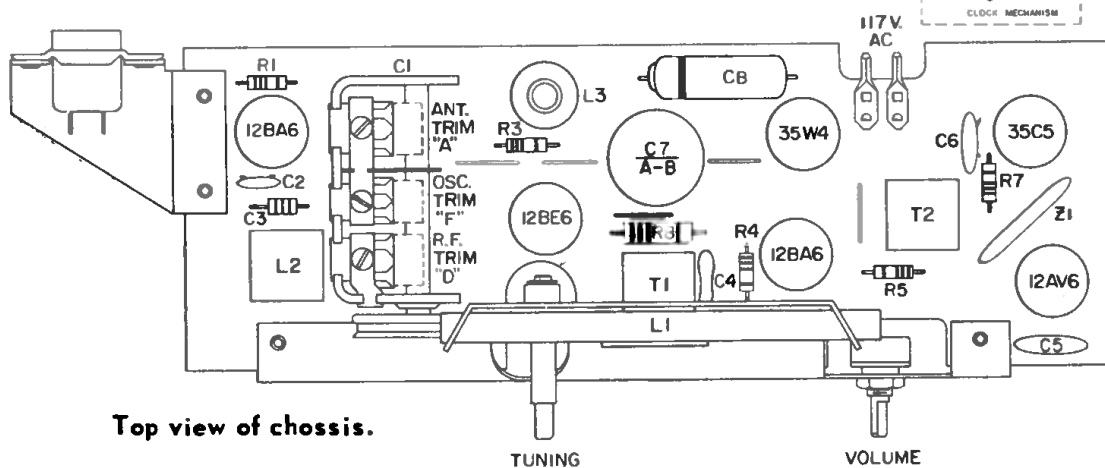
CHASSIS V-2401-2



Bottom view of chassis



NOTES:
1. ALL VOLTAGES MEASURED FROM COMMON NEGATIVE USING A VTVM VOLUME CONTROL AT MINIMUM
LINE VOLTAGE SET AT 117 V-A.C. READINGS SHOULD BE AS SHOWN $\pm 20\%$. TUNING CAPACITOR TUNED OFF STATION
2. ALL CAPACITANCE VALUES IN MFD AND ALL RESISTANCE VALUES IN OHMS UNLESS OTHERWISE SPECIFIED



Top view of chossis.

TUNING

VOLUME

Frequency Range 540 to 1600KC
Intermediate Frequency 455KC

CHASSIS REMOVAL

1. Remove four screws, two from top corners on cabinet back and two from cabinet bottom.
2. Slide cabinet front and attached chassis out from cabinet.

