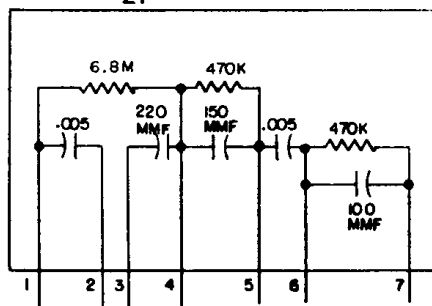
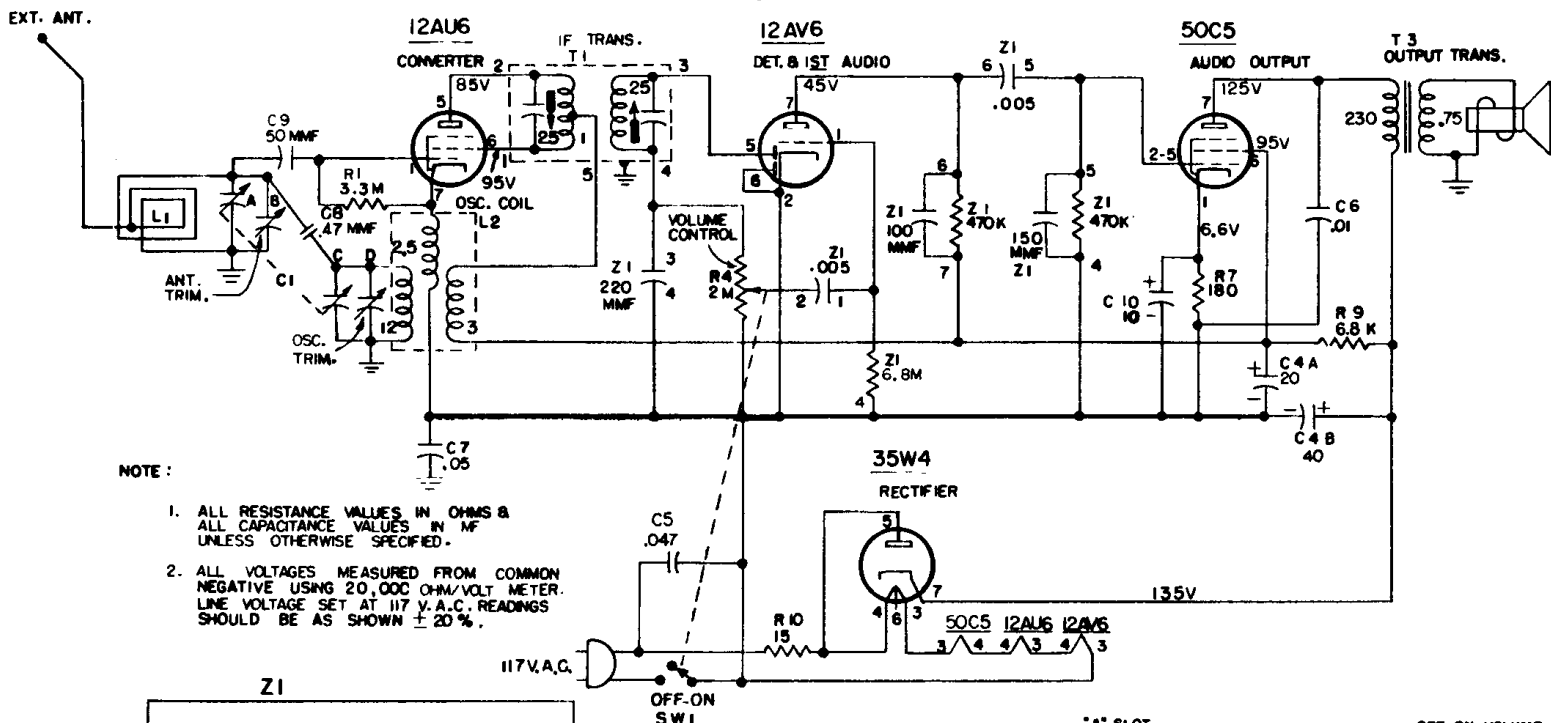


Westinghouse

TELEVISION RADIO

CHASSIS V-2184-4

MODELS H-447T4, H-448T4 AND H-449T4



REMOVING COVER With the right hand, insert a screwdriver into the slot marked "A" (see Fig 2). With the left hand, grasp the chassis so that the thumb is on the speaker magnet and the second finger is pressing forward slightly on the tab (see Fig. 2). Then with a slight turn of the screwdriver the bottom cover will unlock from the chassis.

ALIGNMENT

While making the following adjustments, keep the volume control set for maximum output and the signal generator output attenuated to avoid AVC action.

Step	Connect Signal Generator to -	Signal Generator Frequency	Radio Dial	Adjust for Maximum Output -
1	Stator of ant. tuning capacitor (A) through a 200 mmf capacitor	455 kc.	Minimum capacity	Bottom and top slugs of T1 *
2	Same as step 1	1625 kc.	Minimum capacity	Oscillator trimmer (D)
3	Radiated signal	1400 kc.	1400 kc.	Antenna trimmer (B)

* It is recommended that a fiber aligning tool that snugly fits the slot in the powdered iron core be used to prevent chipping of the slot.

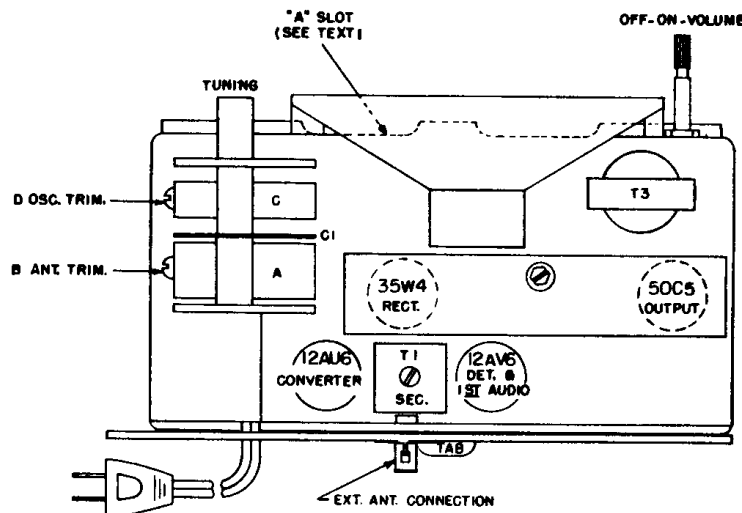


FIG 2 Chassis Layout