

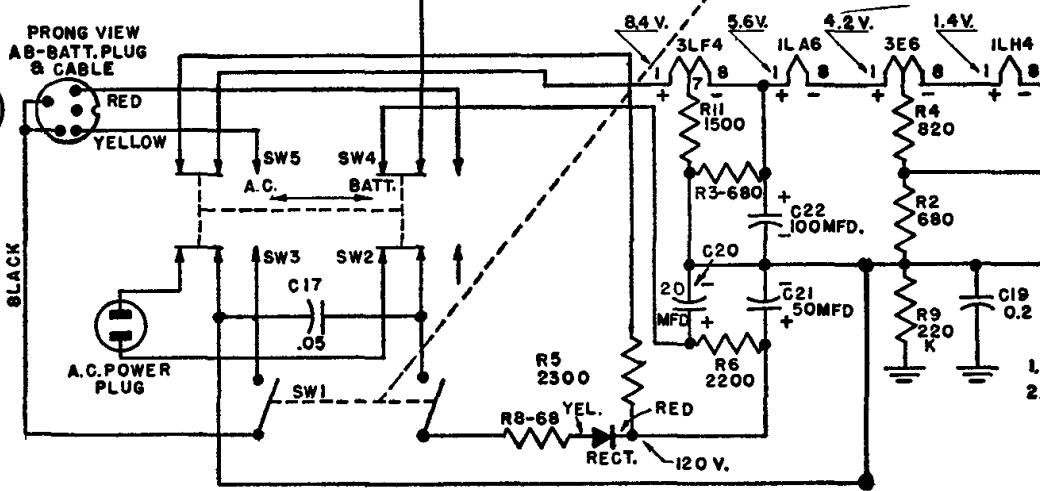
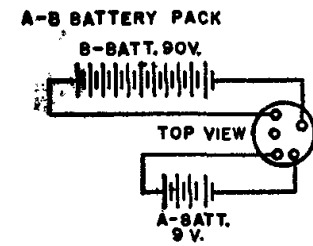
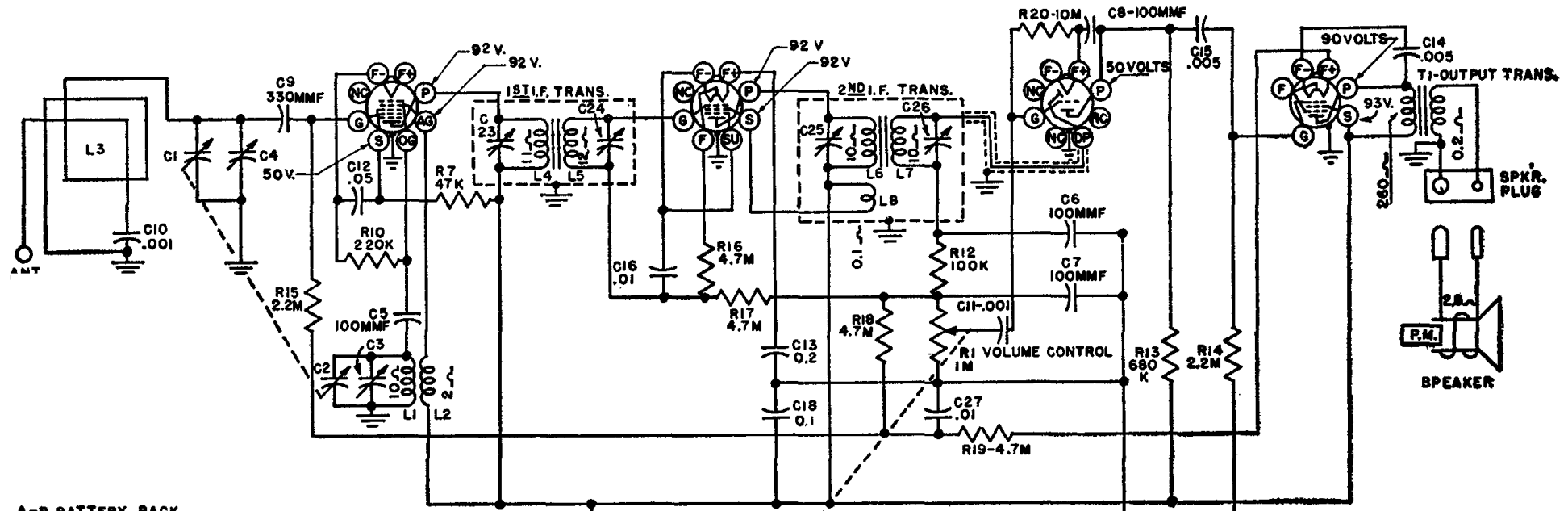
Westinghouse  
RADIO • TELEVISION

**1LA6**  
CONVERTER

**3E6**  
I.F. AMP.

**1LH4**  
DET.-A.V.C. & 1ST A.F.

**3LF4**  
OUTPUT

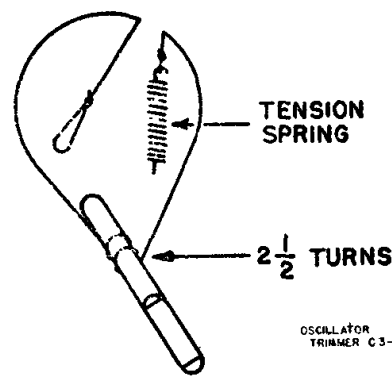


*Westinghouse Electric*

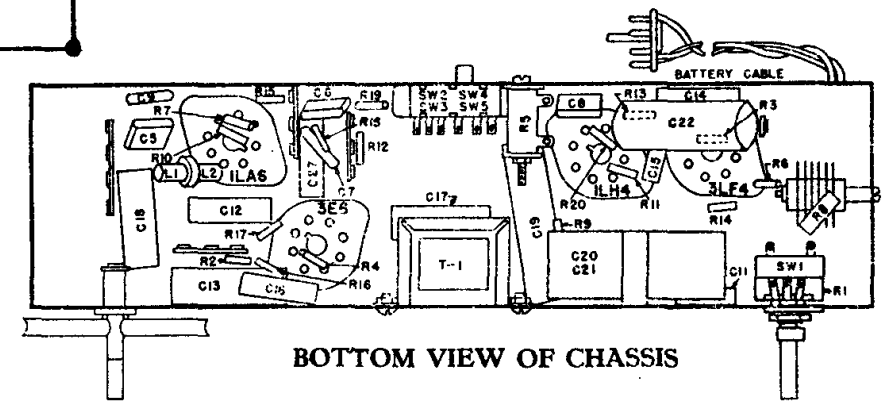
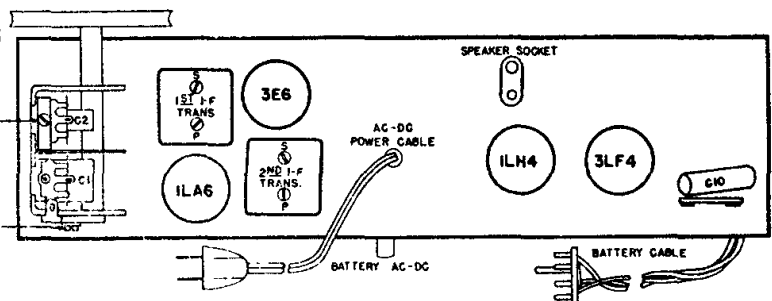
# MODEL H-148

INTERMEDIATE FREQUENCY 455 KC.

1. SWITCHES SW. 2-3-4-5 ARE SHOWN IN A.C. POSITION.
2. VOLTAGES MEASURED FROM COMMON NEGATIVE USING A 20,000 OHM/VOLT METER. (A.C. OPERATION - 115V. LINE.)



DIAL DRIVE MECHANISM



BOTTOM VIEW OF CHASSIS