

# Westinghouse

## RADIO . TELEVISION

# H-202

# H-204

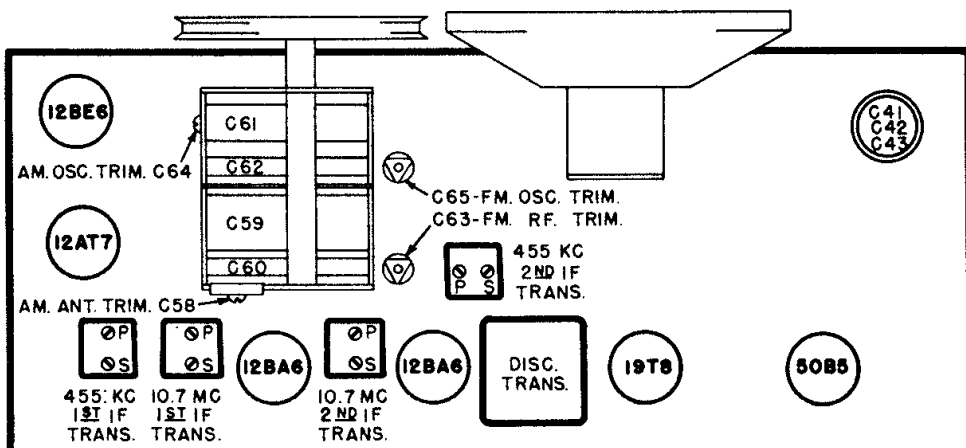


FIG. 1 - UNDER CHASSIS ADJUSTMENT

### FREQUENCY RANGES:

Standard Broadcast ... 540 to 1600 kc.  
Frequency Modulation ... 88 to 108 mc.

### INTERMEDIATE FREQUENCIES:

Amplitude Modulation ..... 455 kc.  
Frequency Modulation ..... 10.7 mc.

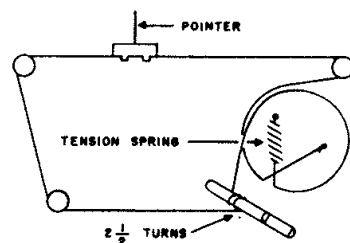
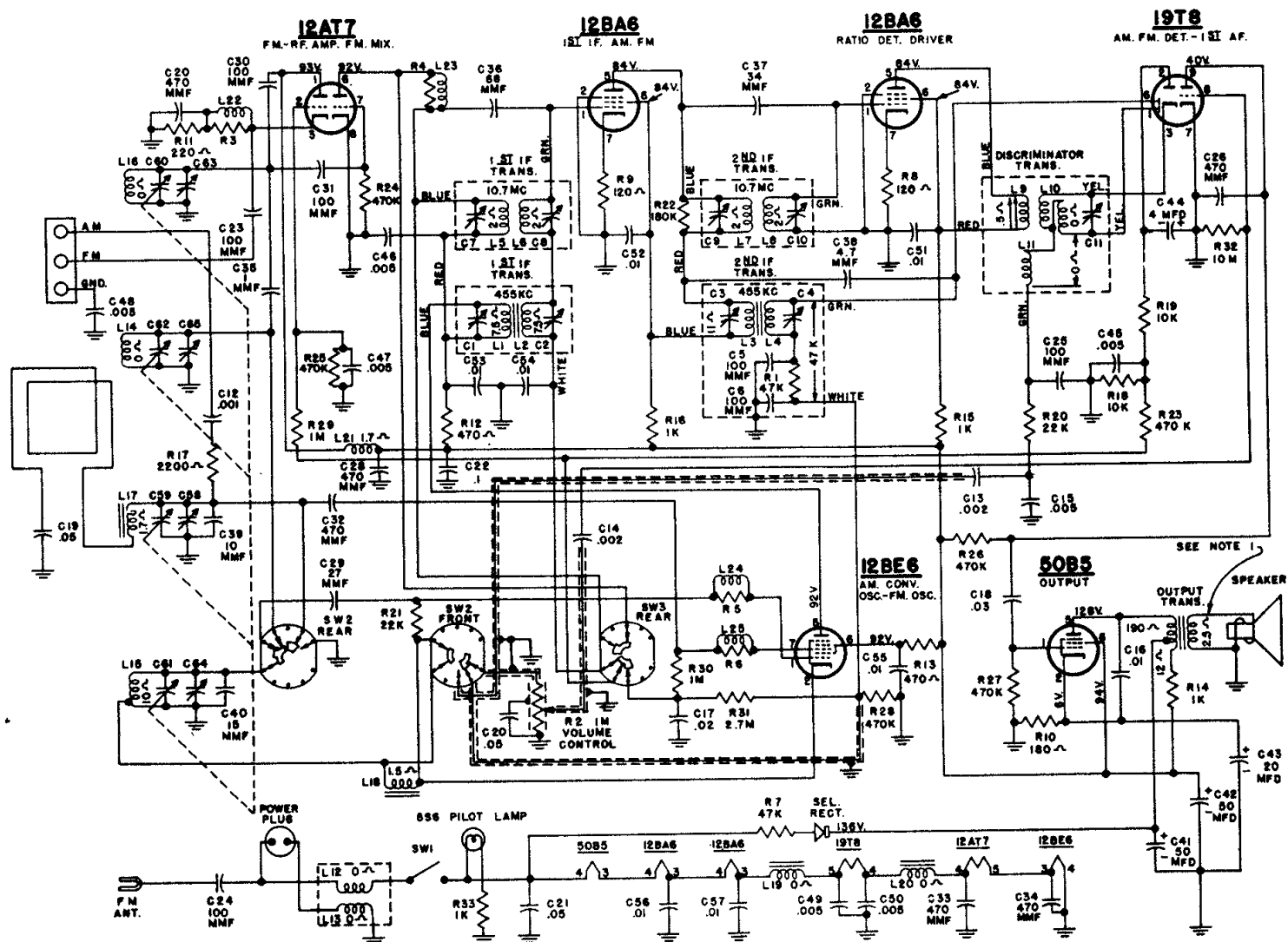


FIG. 2 - DIAL DRIVE



#### NOTE:

1. VOICE COIL DISCONNECTED.
2. SELECTOR SWITCH SW2-SW3 SHOWN IN EXTREME COUNTER CLOCKWISE POSITION OR AM BAND.
3. ALL VOLTAGES MEASURED FROM CHASSIS (GND.) USING 20,000 OHM/VOLT METER-LINE VOLTAGE 117 V.A.C. VOLTAGES SHOULD BE AS SHOWN  $\pm 20$  PER CENT.