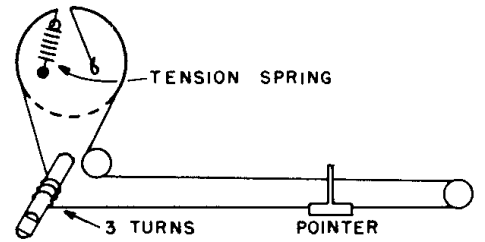
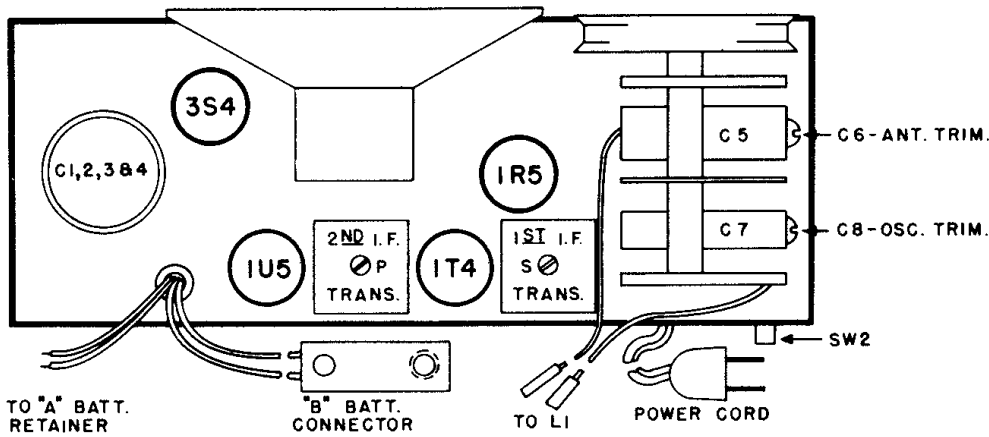
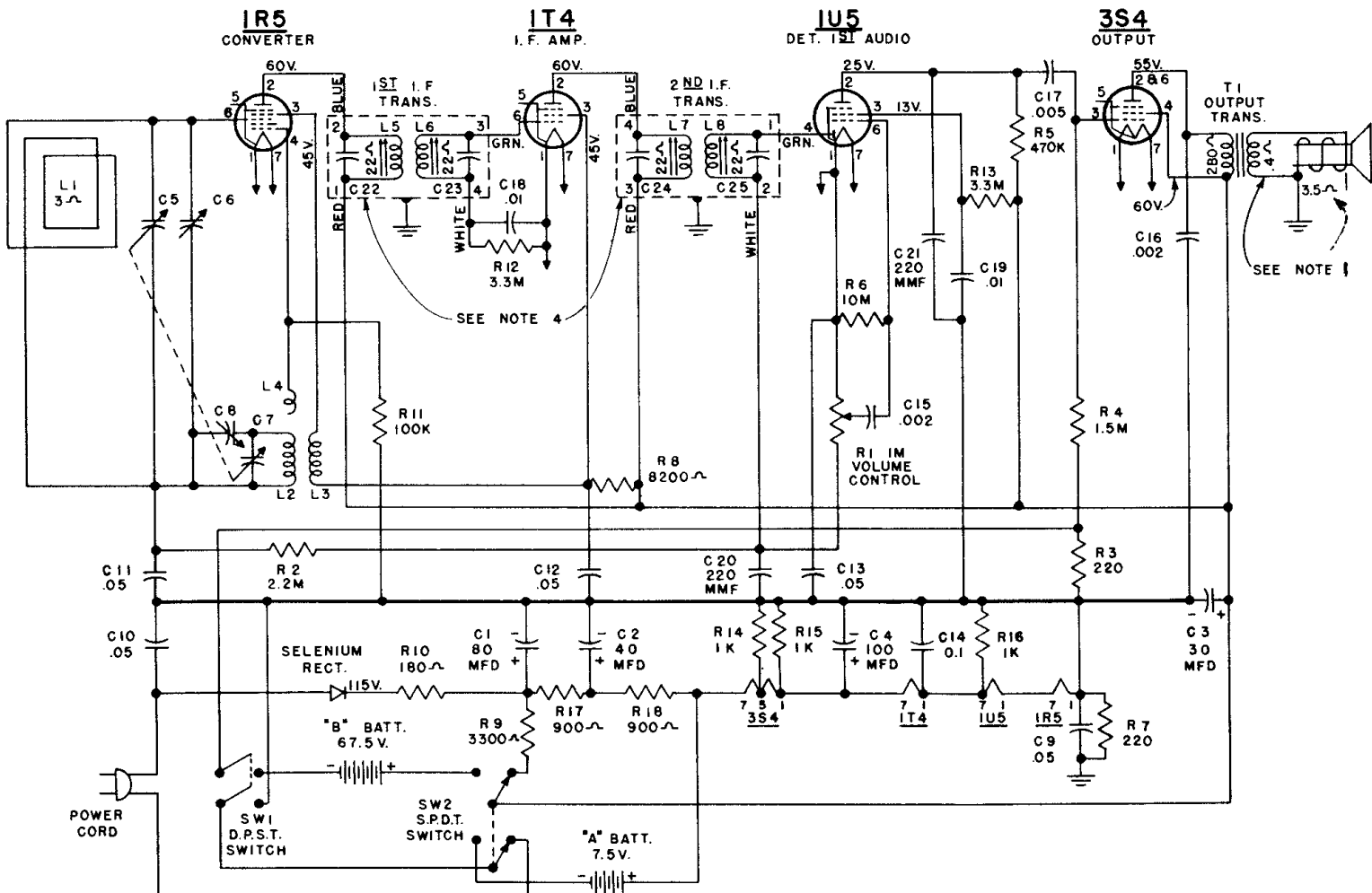


# Westinghouse Electric

Models H-185, H-195



| Step | Connect Signal Generator to -                                   | Signal Generator Frequency | Radio Dial | ALIGNMENT                       |
|------|---|----------------------------|------------|---------------------------------|
|      |   |                            |            | Adjust for Maximum Output       |
| 1    | Stator of R-F tuning capacitor (C5) through a 200 mmf capacitor | 455 kc                     | 455 kc     | Pri. and Sec. of 2nd I-F trans. |
| 2    | Stator of R-F tuning capacitor (C5) through a 200 mmf capacitor | 455 kc                     | 455 kc     | Pri. and Sec. of 1st I-F trans. |
| 3    | Recheck steps 1 and 2   |                            |            |                                 |
| 4    | Radiated Signal   | 1615 kc                    | 1615 kc    | Oscillator Trimmer (C8)         |
| 5    | Radiated Signal   | 1400 kc                    | 1400 kc    | R-F Trimmer (C6)                |



- NOTE:
1. VOICE COIL DISCONNECTED
  2. SWITCH NO. 2 SHOWN IN AC/DC POSITION.
  3. ALL VOLTAGES MEASURED FROM CIRCUIT (GND) USING A 20,000 OHMS/VOLT METER-LINE VOLTAGE AT 117 V.A.C. VOLTAGES SHOULD BE AS SHOWN  $\pm 20$  PER CENT.
  4. SOME MODELS MAY HAVE CAPACITOR TRIMMERS.

CHASSIS NO. V-2131 AND V-2131-1