

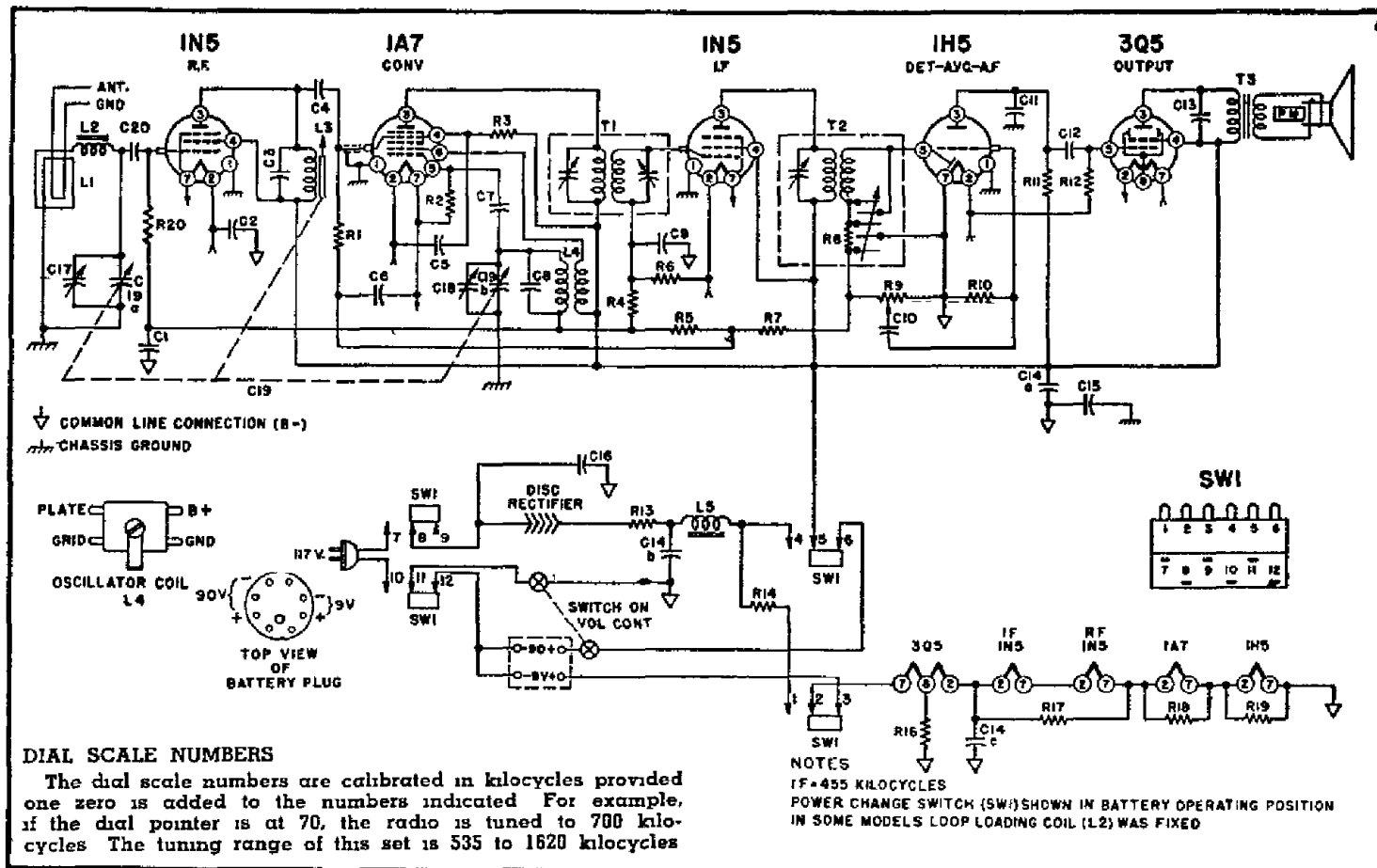
MODELS D3630, D3630N POWER SUPPLY

WESTERN AUTO SUPPLY CO.

BATTERY

This receiver is designed to operate on either a Battery Pack or any AC (Alternating Current) power supply line of 105 to 125 volts, 50 to 60 cycles, or DC (Direct Current) power supply line of 105 to 125 volts.

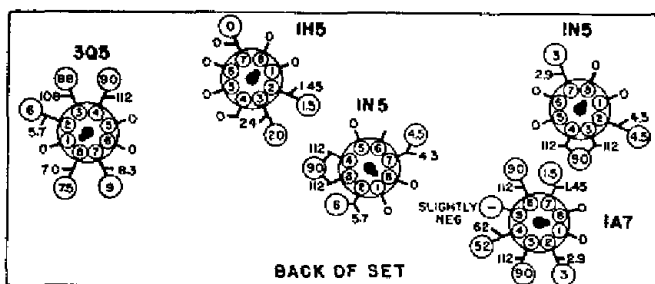
Any one of the following battery packs may be used in this portable radio Western Auto Supply Wizard B6480 or B6470, Ensign AB50, Ensign AB49, General 80A-6F6-5, General 60B-6F6-5, Burgess F6A60, Burgess G6M60, Eveready 754, Ray-O-Vac AB878 or Ray-O-Vac AB994. For best results, use Western Auto Supply Wizard B6460 (Standard) or B6470 (Deluxe) battery packs for replacement.



DIAL SCALE NUMBERS

The dial scale numbers are calibrated in kilocycles provided one zero is added to the numbers indicated. For example, if the dial pointer is at 70, the radio is tuned to 700 kilocycles. The tuning range of this set is 535 to 1620 kilocycles.

VOLTAGE CHART



VOLTAGE DATA

1. Voltage readings circled (O) are for Battery Operation.
2. All readings made between Tube Socket Terminals and Pin No. 7 on the 1H5.
3. A.C. Voltages measured on a 117 Volt A.C. line.
4. Battery Voltages measured with a fresh battery.
5. Dial turned to low frequency end, no signal.
6. All Voltages measured with a 1000 ohm-per-volt meter.

REPLACEMENT PARTS

CONDENSERS			RESISTORS			COILS and TRANSFORMERS		
Symbol	Description	Part No	Symbol	Description	Part No	Symbol	Description	Part No
C1	05 Mfd, 200 Volt	Paper 64B1-32	R4	4.7 Megohms, 1/4 Watt, Carbon	60B2-475	T2	2nd IF Transformer	72B10-2
C2	25 Mfd, 200 Volt	Paper 64B1-28	R6	4.7 Megohms, 1/4 Watt, Carbon	60B2-475	T3	Transformer, Output	*
C3	00042 Mfd, Mica	65B1-13	R7	3.3 Megohms, 1/4 Watt, Carbon	60B2-335	* When ordering, specify all numbers on the speaker and transformer		
C4, C11	00025 Mfd, Mica	65B5-22	R8	47,000 Ohms, 1/2 Watt, Carbon	60B8-473	Switch, Power Change		
C5, C6, C9, C10, C12	01 Mfd, 400 Volt	Paper 64B1-25	R9	1 Megohm Volume Control	75B1-10C	D3630		
C7	00005 Mfd, Mica	65B5-11	R10	15 Megohms, 1/4 Watt, Carbon	60B2-156	77A6		
C8	000015 Mfd, Mica	65B5-3	R11, R20	1 Megohm, 1/4 Watt, Carbon	60B2-105	Switch, Power Change		
C13	002 Mfd, 600 Volt	Paper 64B1-14	R12	2.2 Megohms, 1/4 Watt, Carbon	60B2-225	D3630N		
C14a	50 Mfd, 150 Volt	Elect 67C7-42	R13	68 Ohms, Wire Wound, 1 Watt	60B28-4	77A10		
C14b	30 Mfd, 150 Volt		R14	2,275 Ohms Wire Wound 5 Watt	61A3-6	MISCELLANEOUS		
C14c	100 Mfd, 25 Volt	Cond	R16	1,500 Ohms 1/2 Watt Carbon	60B8-152	Description	Part No	
C15	2 Mfd, 400 Volt	Paper 64A2-1	R17	560 Ohms, 1/2 Watt, Carbon	60B8-561	Dial Background	21A18-2	
C16	05 Mfd, 400 Volt	Paper 64B1-22	R18	220 Ohms 1/2 Watt Carbon	60B8-221	Dial Cord 12"	50A1-3	
C17	Antenna Trimmer	68A12-5	R19	120 Ohms 1/2 Watt, Carbon	60B8-121	Dial Cord Tension Spring	19A1-2	
C18	Oscillator Trimmer (Part of Gang)	68B4	COILS and TRANSFORMERS			Lscutcheon and Dial Scale	23C14	
C19 {C19a	Condenser, Gang	68B4	L2	Coil, Loop Loading, (fixed)	AA114	Knob, Tuning	33A14-6	
C20	00025 Mfd, Mica	65B7-22	L3	Coil, Loop Loading, (variable)	AA115	Knob Volume	33A14-5	
RESISTORS			L4	Coil, Slug for plate coil	71B1-3	Plug Battery (9 prong)	88A3-3	
R1	100,000 Ohms, 1/2 Watt, Carbon	60B8-104	L5	Coil, Plate	AB100-5	Pointer Cream Tenite	21A15-1	
R2	220,000 Ohms, 1/2 Watt, Carbon	60B8-221	L6	Oscillator Coil	6947	Rectifier Selenium	91A1-2	
R3	47,000 Ohms, 1/2 Watt, Carbon	60B8-473	F5	Choke Filter	7445	Speaker and Output Transformer	78B8	
			L1	1:1 IF Transformer	72B9-2	Tube Shields	8748	