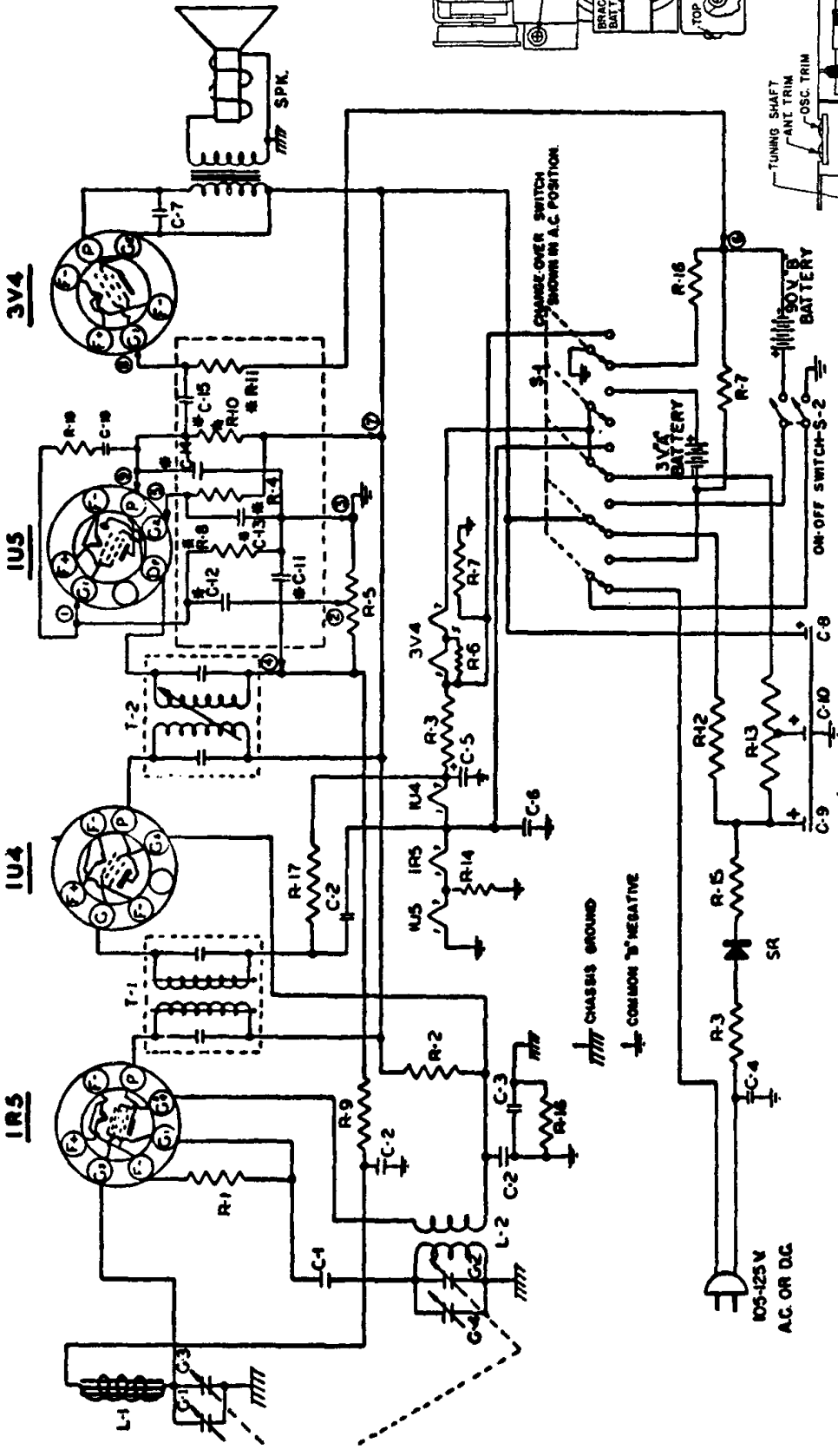


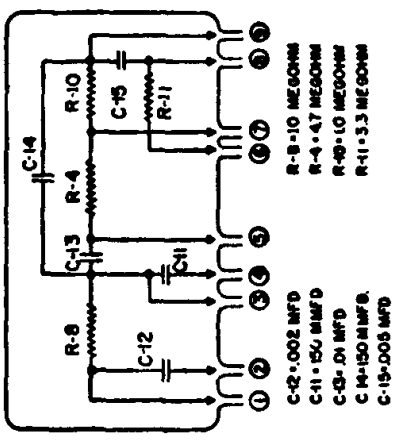
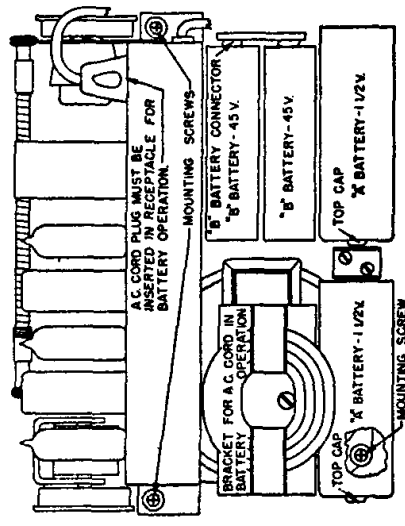
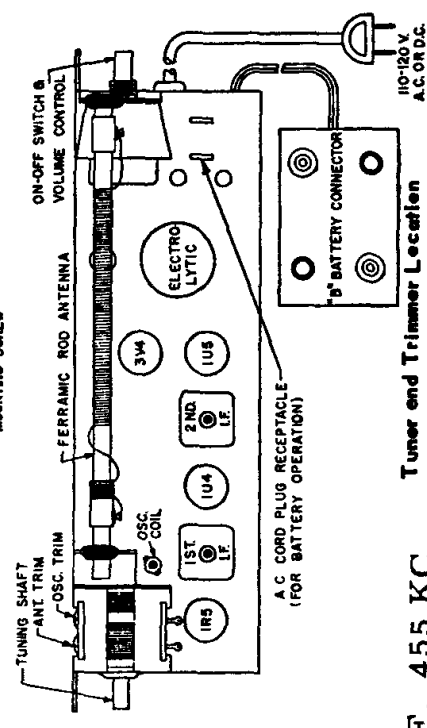
8 PART OF PRINTED CIRCUIT PC-185  
TRAILER PART NO. NC-18, SHOWN BELOW



PART NO.	SYMBOL	DESCRIPTION
IR-43	R-1	100 K 1/2 W. 10% Resistor
IR-63	R-2	15 K 1/2 W. 10% Resistor
IR-17	R-3	33 1/2 W. 20% Resistor
VC-47	R-5	1 MEGOHM Volume Control
IR-33	R-6	270 1/2 W. 10% Resistor
IR-39	R-7	620 1/2 W. 5% Resistor
IR-3	R-17	10 MEGOHM 1/2 W. 20% Resistor
IR-25	R-12	2200 1 W. 10% Resistor
WR-7	R-13	2100 10 W. 5% Wirewound Resistor
IR-1	R-14	470 1/2 W. 20% Resistor
IR-41	R-15	47 1 W. 10% Resistor
IR-23	R-9	33 MEGOHM 1/2 W. 20% Resistor
IR-20	R-16	220 K 1/2 W. 20% Resistor
CC-5	C-1	100 MMFD Ceramic Capacitor, 500 V.
CC-4	C-2	.01 MFD Paper Capacitor, 400 V.
PC-8	C-3	.05 MFD x 400 V. Paper Capacitor
PC-5	C-4	70 MFD @ 10 W.V. Electrolytic Capacitor
PC-6	C-5	.1 MFD x 200 V. Paper Capacitor
CC-3	C-6	1500 MMFD x 500 V. Ceramic Capacitor
CC-20	C-7	
EC-32	(C-8)	40 MFD
LO-18	(C-9)	150 V. Electrolytic Capacitor
LI-10	(C-10)	20 MFD
LI-30	L-2	Oscillator Coil
LI-11	L-1	Ferramic Rod Antenna
GC-12	T-1	Input I.F. Transformer
GC-12	T-2	Output I.F. Transformer
GC-12	(G-1)	Antenna Section
GC-12	(G-2)	Oscillator Section
GC-12	(G-3)	Antenna Trimmer
GC-12	(G-4)	Oscillator Trimmer
SW-18	(S-1)	6 Pole, 2 Position Switch
SW-18	(S-2)	2 Pole, 1 Position Switch on Volume Control
SR-2	SR	75 MIL Galenium Rectifier
SPK-29	SPK	4" P.M. Speaker with Output Transformer
IR-13	R-18	2.2 MEGOHM 1/2 W. 20% Resistor
CC-33	C-16	220 MMFD 500 V. 20% Ceramic Capacitor
CA-155		Cabinet - Complete
K-133		Volume Knob
K-154		Tunnel Knob

I.F. 455 KC.

Tuner and Trimmer Location



**Western Auto Supply**  
**MODEL NOS. D3503A, D3504A**