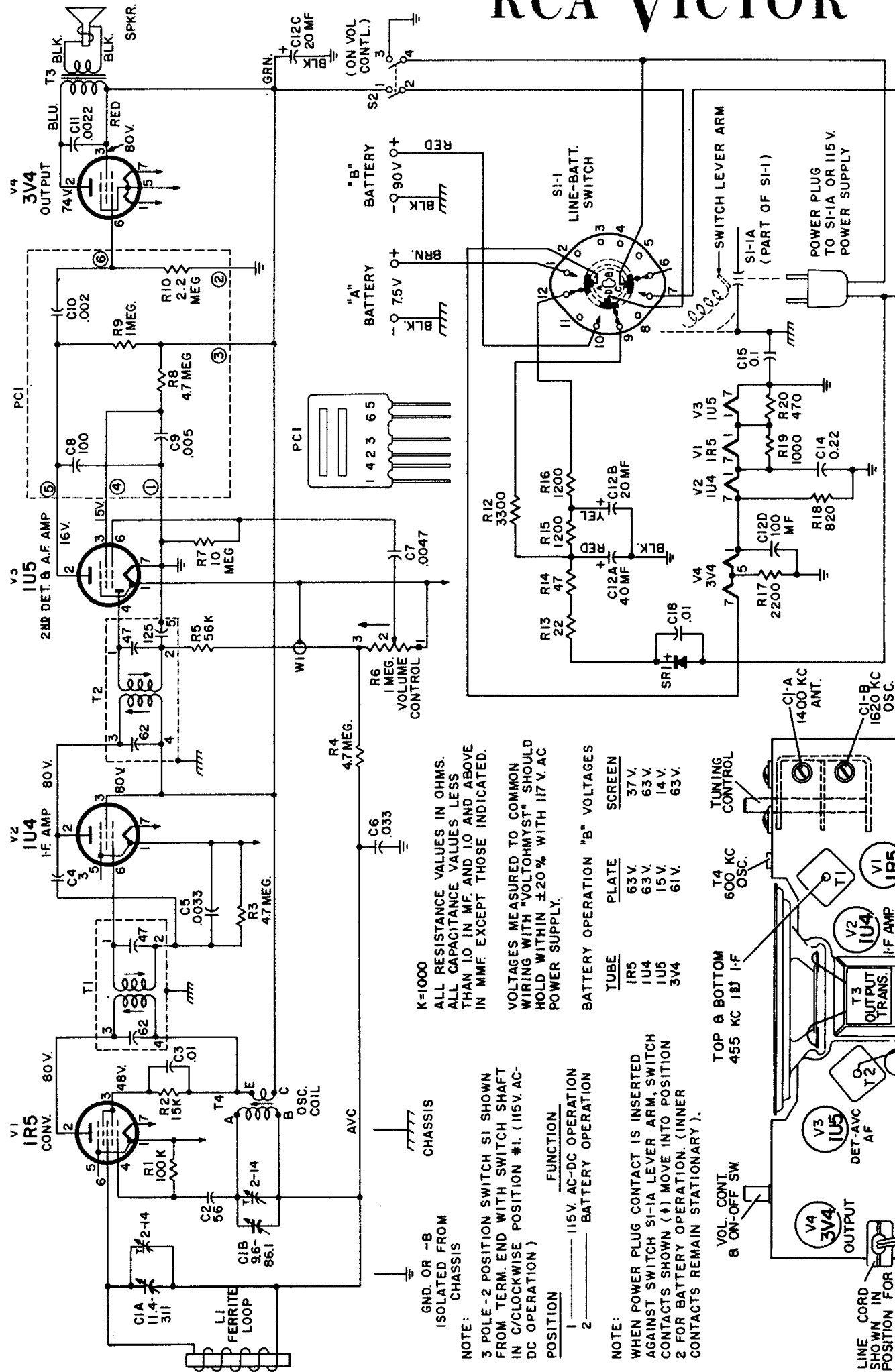
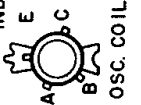


RCA VICTOR

**MODEL 8-BX-6 SERIES,
MODEL 8-BX-7 SERIES**
Chassis Nos. RC-1161, RC-1161A



INDEX TAB



K=1000
ALL RESISTANCE VALUES IN OHMS.
ALL CAPACITANCE VALUES LESS
THAN 10 IN MF. AND 10 AND ABOVE
IN MMF EXCEPT THOSE INDICATED.

VOLTAGES MEASURED TO COMMON
WIRING WITH "VOLTOHMYST" SHOULD
HOLD WITHIN $\pm 20\%$ WITH 117 V.A.C.
POWER SUPPLY.

BATTERY OPERATION "B" VOLTAGES

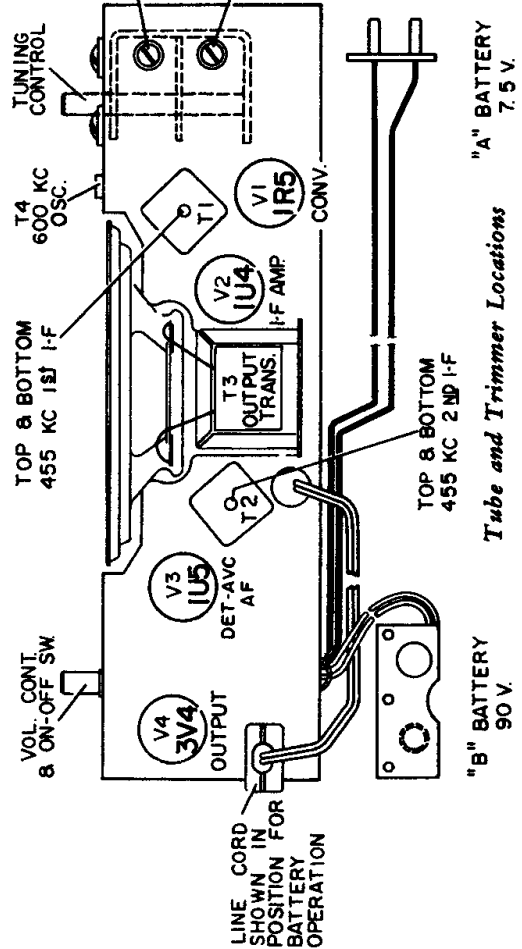
TUBE	PLATE	SCREEN
IR5	63 V.	37 V.
IU4	63 V.	63 V.
IU5	15 V.	14 V.
3V4	61 V.	63 V.

NOTE:
3 POLE-2 POSITION SWITCH S1 SHOWN
FROM TERM. END WITH SWITCH SHAFT
IN C/CLOCKWISE POSITION #1. (115V. AC-
DC OPERATION)

POSITION

1	115V. AC-DC OPERATION
2	BATTERY OPERATION

NOTE:
WHEN POWER PLUG CONTACT IS INSERTED
AGAINST SWITCH S1-1A LEVER ARM, SWITCH
CONTACTS SHOWN (4) MOVE INTO POSITION
2 FOR BATTERY OPERATION. (INNER
CONTACTS REMAIN STATIONARY).



"B" BATTERY 90 V.

"A" BATTERY 7.5 V.

Tube and Trimmer Locations