

600 KC  $1\frac{1}{2} X$     600-455 KC  $60 X$     455 KC  $.9 X$     455 KC  $100 X$     455 KC  $.9 X$     400 ~  $70 X$     400 ~  $20 X$

Standard Broadcast ("A" Band) 540-1600 kc  
Short Wave ("C" Band)..... 5.9-17.9 mc

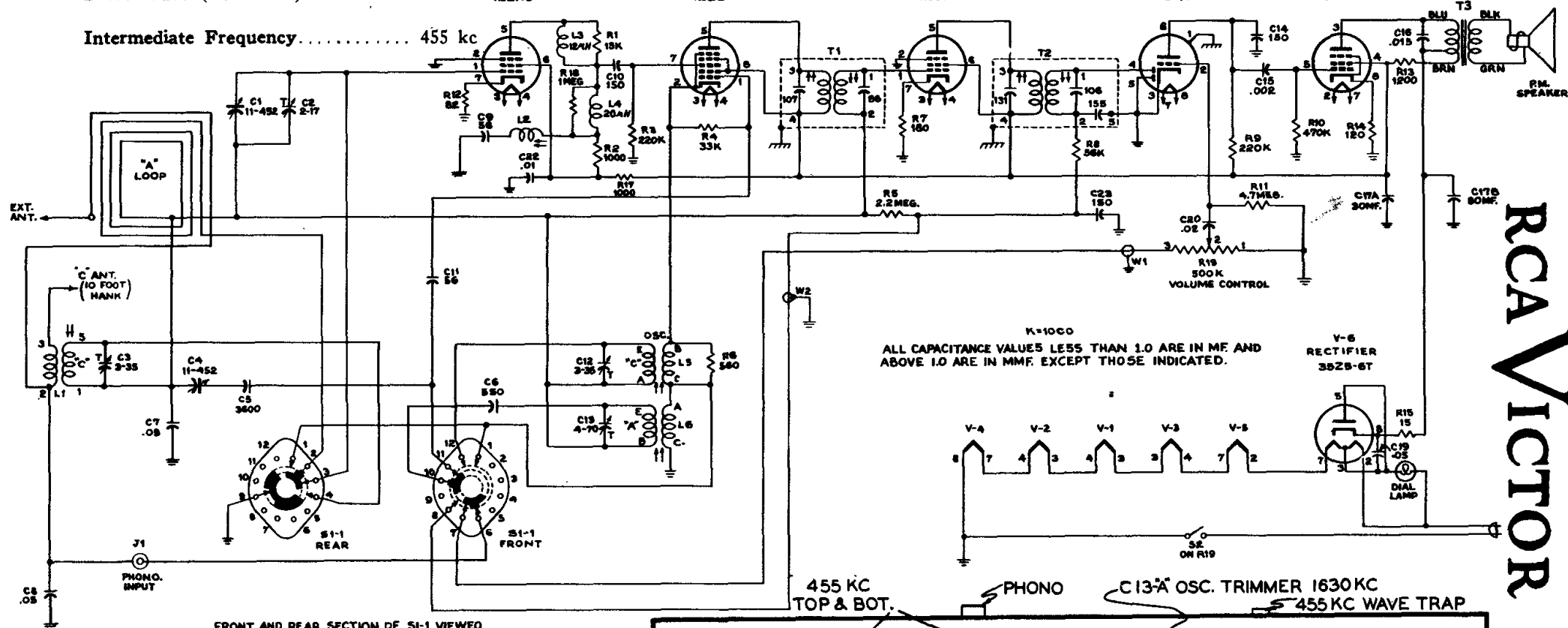
V-1  
R.F.  
12BA6

V-2  
CONVERTER  
12BE6

V-3  
LF  
12BA6

V-4  
2ND DET. - A.F. - A.V.C.  
125Q7

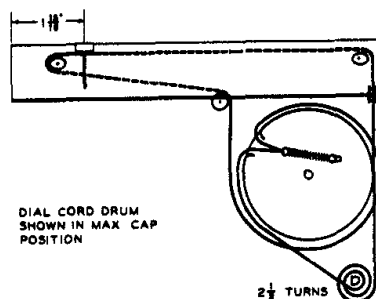
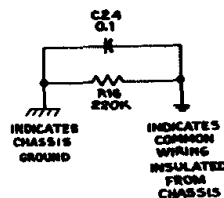
V-5  
OUTPUT  
35L6-GT



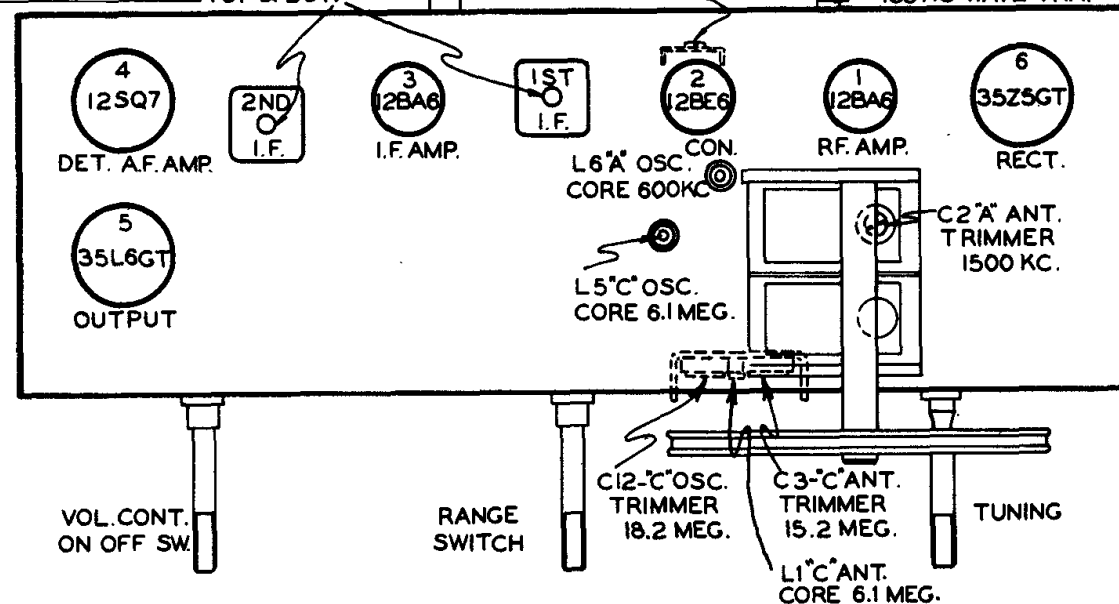
K=1000  
ALL CAPACITANCE VALUES LESS THAN 1.0 ARE IN MF AND  
ABOVE 1.0 ARE IN MMF, EXCEPT THOSE INDICATED.

FRONT AND REAR SECTION OF SI-1 VIEWED FROM FRONT WITH THE CONTROL SHAFT IN EXTREME C/CLOCKWISE POSITION #1 (PHONE)

51-1 SEQUENCE	
POS.	FUNCTION
1	PHONO.
2	"A" BAND
3	"C" BAND



### Dial Drive Mechanism



# RCA VICTOR

**MODELS 9X651, 9X652**  
Chassis No. RC-1085 RC-1085A