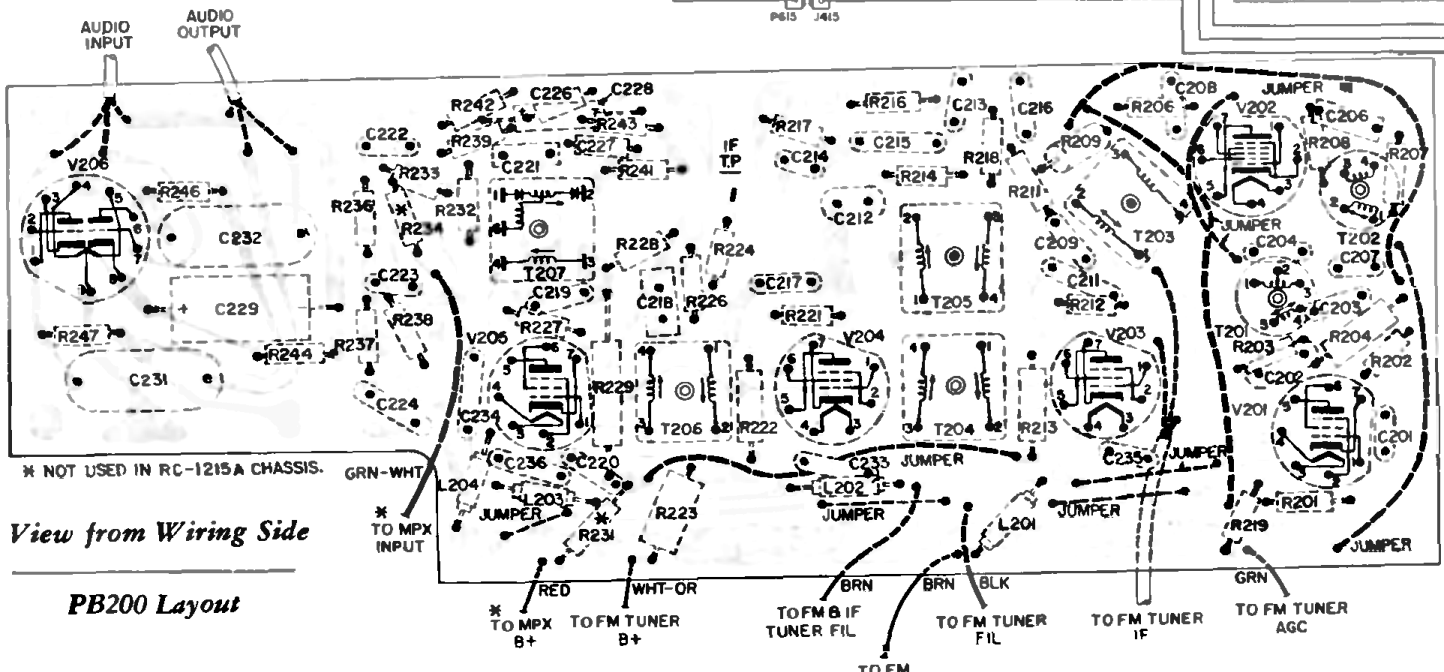
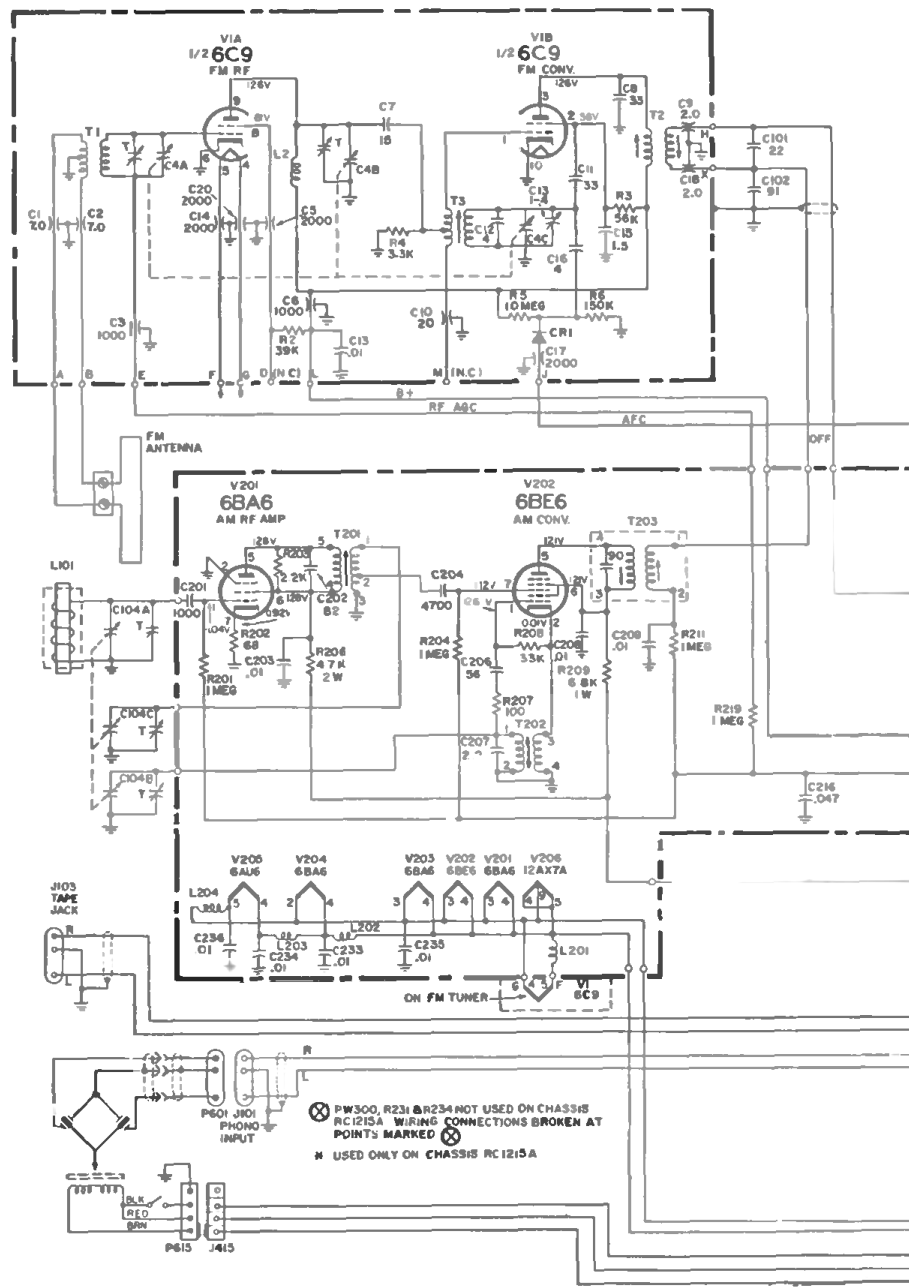
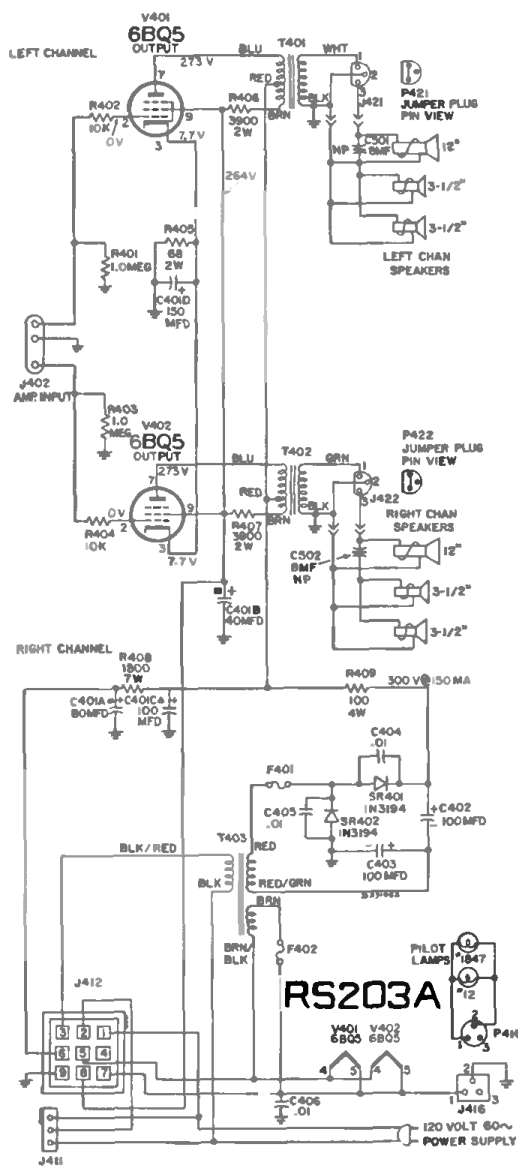
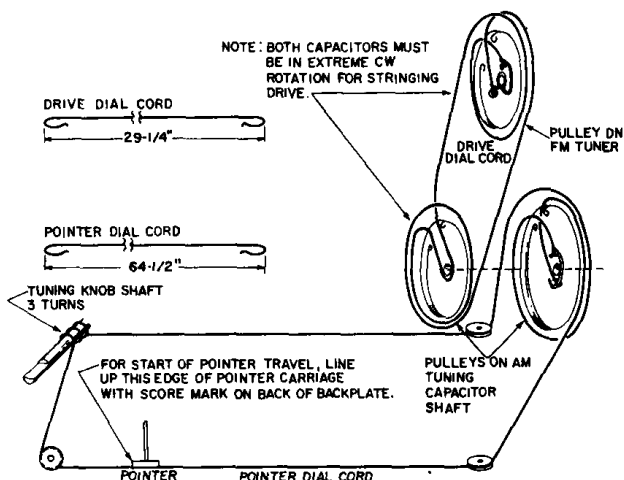
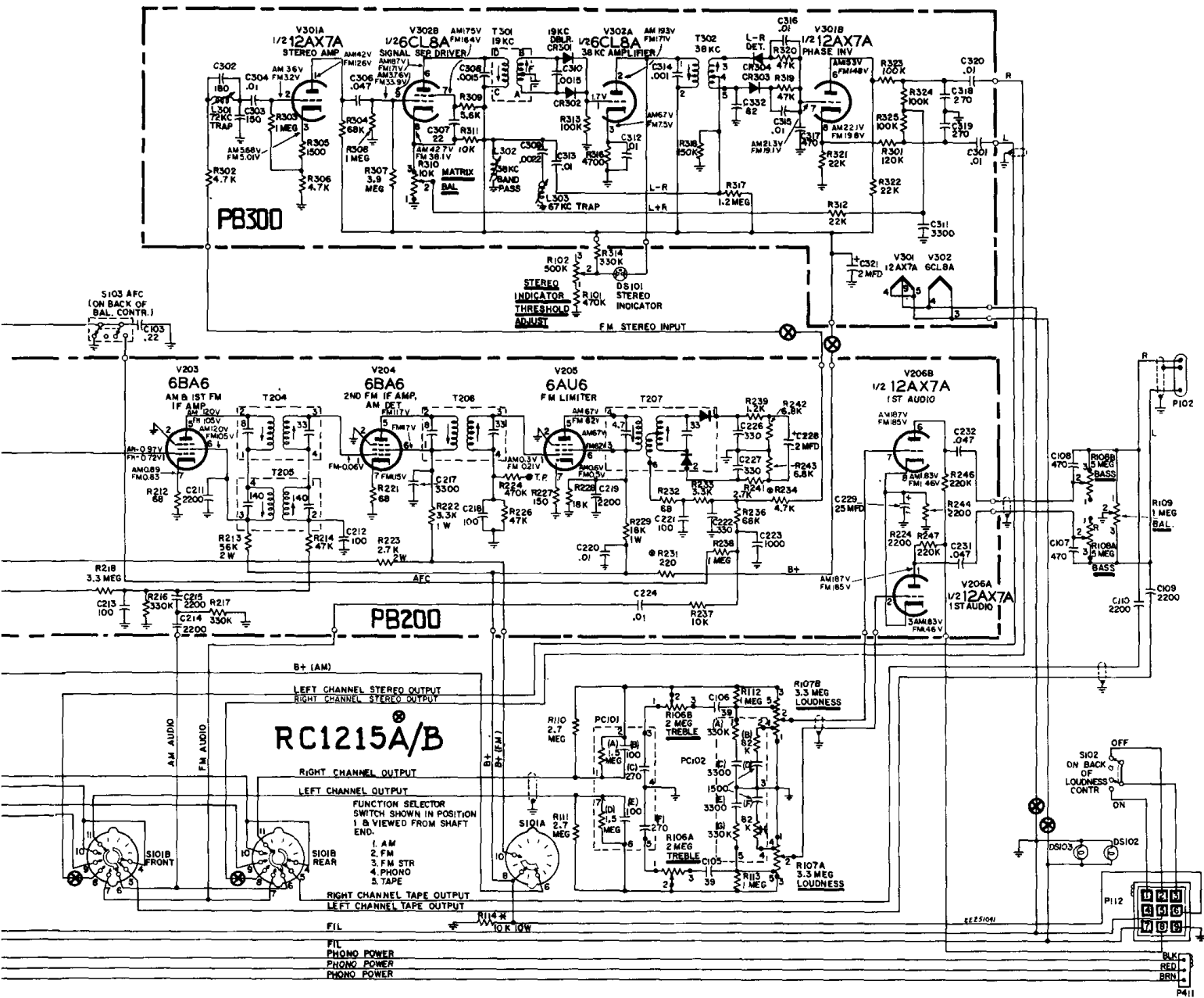


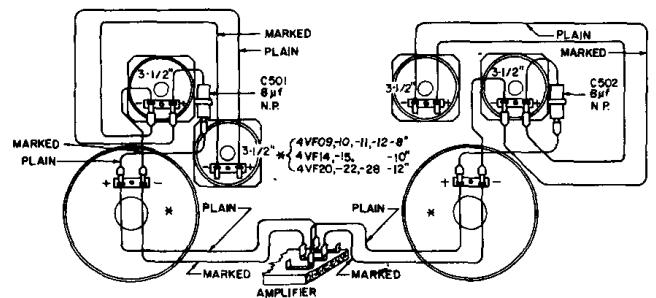
RCA Victor Models 4VF095, 4VF096, 4VF105, 4VF106, 4VF114, 4VF124, 4VF145, 4VF146, 4VF155, 4VF156, 4VF206, 4VF224, 4VF282, 4VF289, use Chassis RC-1215A & B Tuner and Amplifier Chassis RS-203A



RCA Victor Models 4VF095, 4VF096, 4VF105, 4VF106, 4VF114, 4VF124, 4VF145, 4VF146, 4VF155, 4VF156, 4VF206, 4VF224, 4VF282, 4VF289, use Tuner Chassis RC-1215A & B and Amplifier Chassis RS-203A

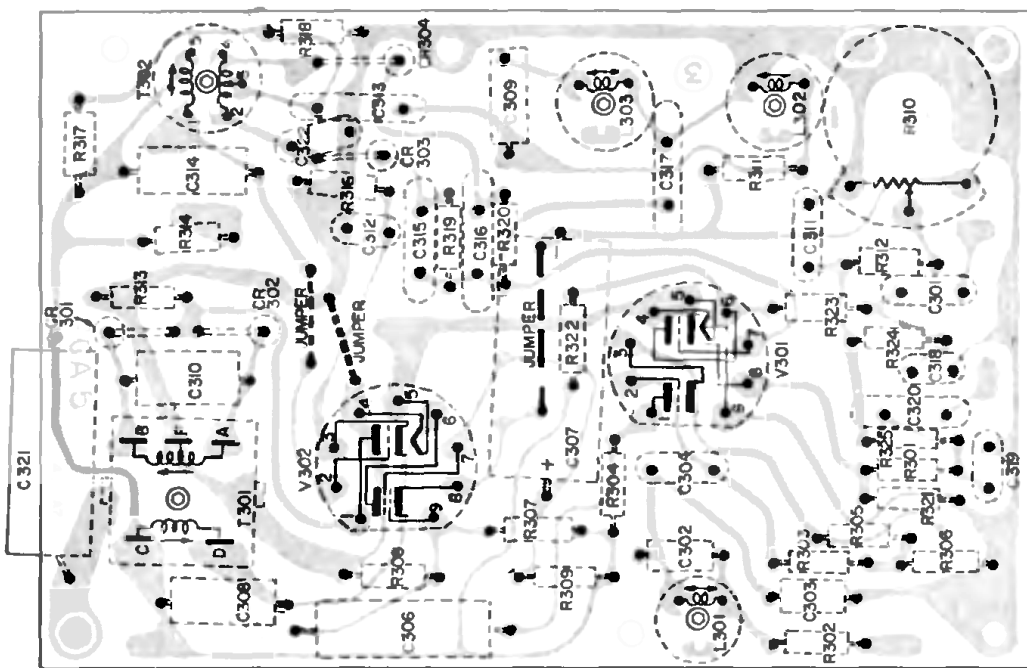


Dial Cord Arrangement

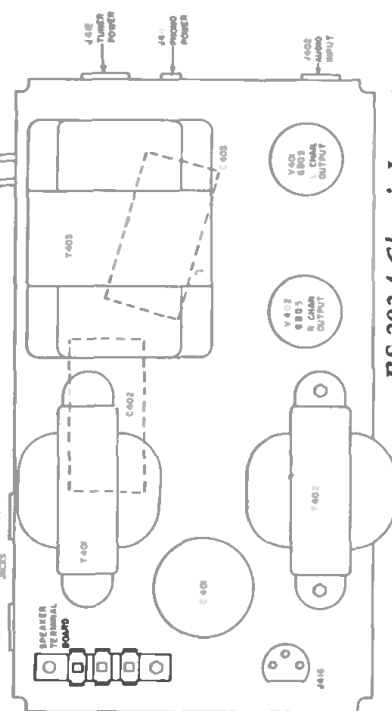


Speaker Wiring

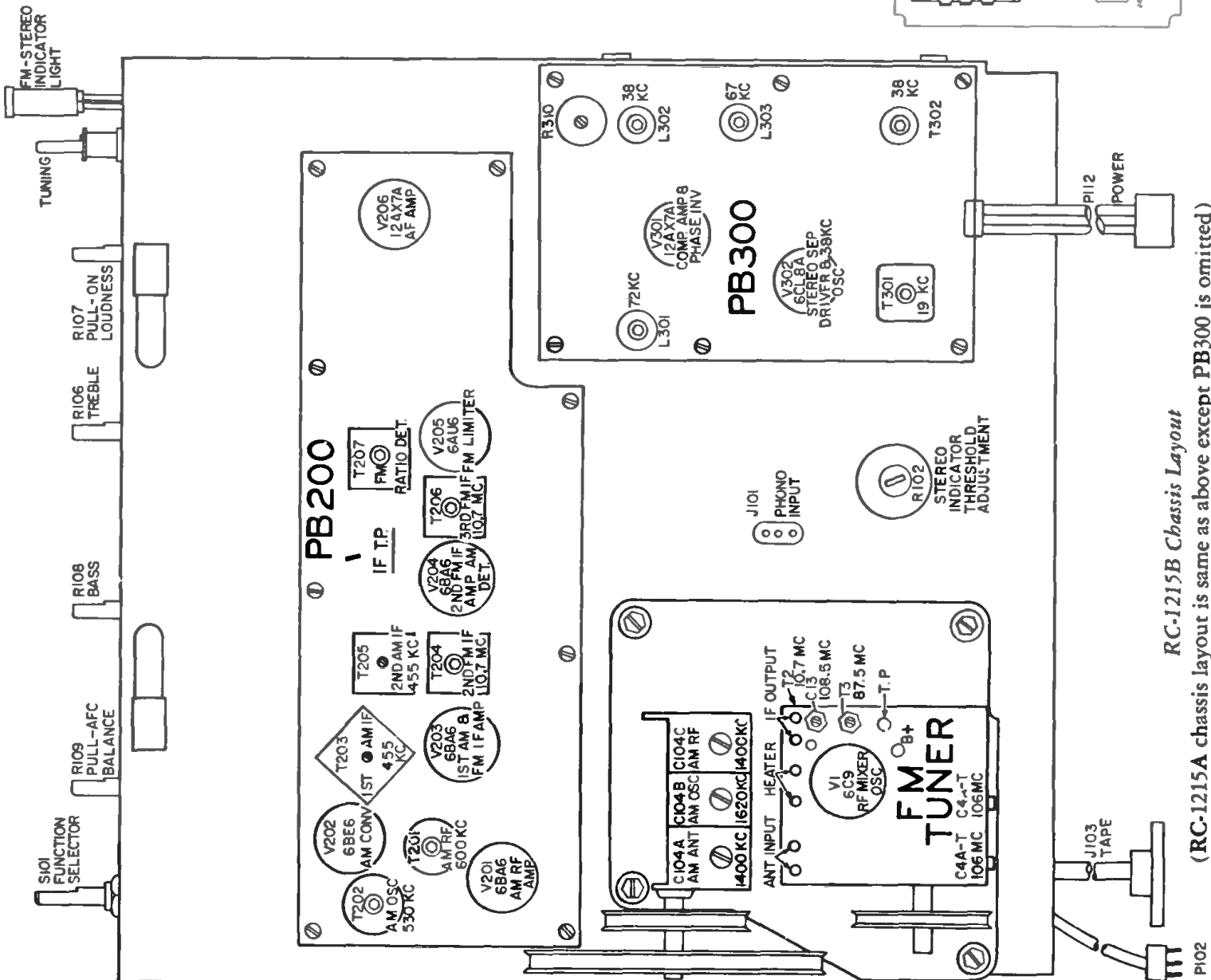
RCA Victor Models 4VF095, 4VF096, 4VF105, 4VF106, 4VF114, 4VF124, 4VF145, 4VF146, 4VF155, 4VF156, 4VF206, 4VF224, 4VF282, 4VF289, use Tuner Chassis RC-1215A & B, Amplifier RS-203A.



PB300 Layout View from Wiring Side



RS-203A Chassis Layout



RC-1215B Chassis Layout

(RC-1215A chassis layout is same as above except PB300 is omitted)