

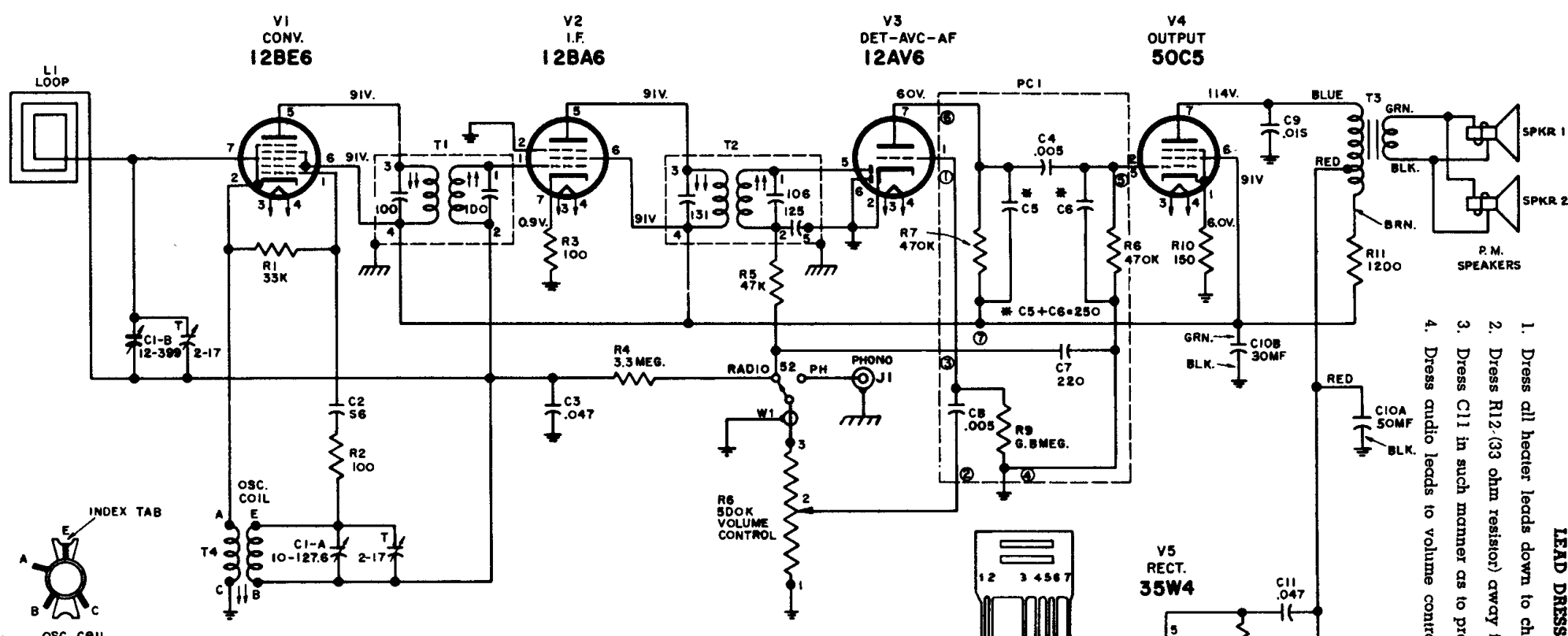
RCA VICTOR

MODEL 6-XD-5

Chassis No. RC-1146A

LEAD DRESS

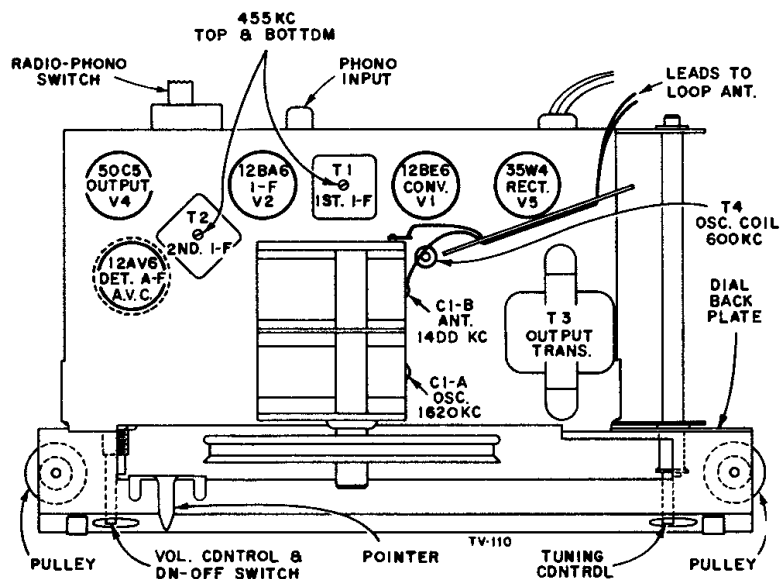
1. Dress all heater leads down to chassis.
2. Dress R12 (33 ohm resistor) away from all leads.
3. Dress C11 in such manner as to prevent shorts to chassis.
4. Dress audio leads to volume control away from a.c. leads.



VOLTAGES MEASURED TO COMMON WIRING WITH VOLTCYST, SHOULD HOLD WITHIN $\pm 20\%$ WITH RATED POWER SUPPLY.

CATHODE CURRENTS

		MA.
V1	12BE6	9.3
V2	12BA6	9.6
V3	12AV6	0.15
V4	50C5	41.1
V5	35W4	60.0



Tube and Trimmer Locations

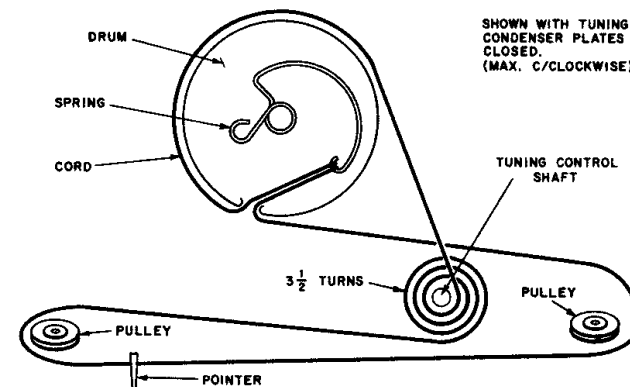
INDICATES COMMON WIRING ISOLATED FROM CHASSIS.

INDICATES CHASSIS GROUND

K = 1000

ALL RESISTOR VALUES ARE IN OHMS

ALL CAPACITOR VALUES LESS THAN 1.0 ARE IN MF. AND ABOVE 1.0 ARE IN MMF. EXCEPT THOSE INDICATED.



Tuning Drive Cord