

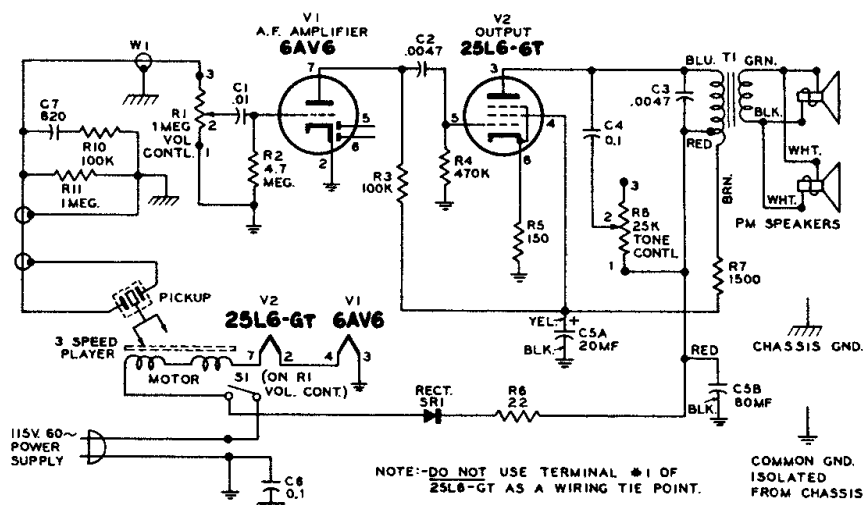


RCA VICTOR

Portable Record Player

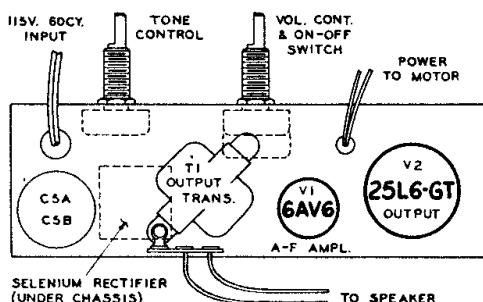
MODELS 7-EMP-1J, 7-EMP-1K

Chassis No. RS-152C



ALL RESISTANCE VALUES IN OHMS. K=1000

ALL CAPACITANCE VALUES LESS THAN 1 IN MF & ABOVE 1 IN MMF UNLESS OTHERWISE NOTED.



STYLUS REMOVAL

Each stylus is mounted on a short pin which fits into a socket on the pickup. To remove a stylus, pull straight outward away from pickup; it is held in place only by pressure fit.

When replacing a stylus, be certain that the stylus coded with red paint points downward when "33-45" is visible on top of control lever. Likewise, the uncoded stylus should point downward when "78" is visible on top of control lever.

OPERATION

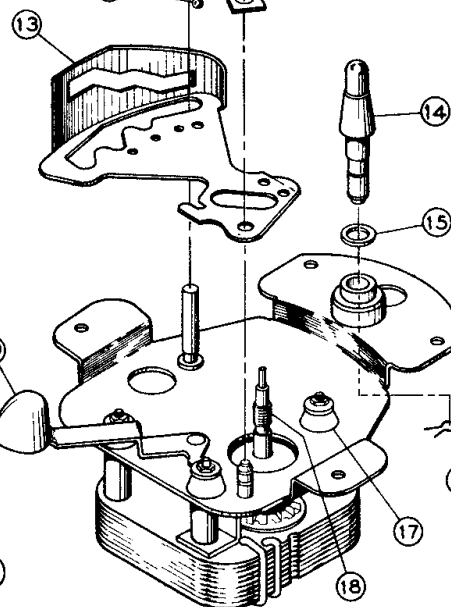
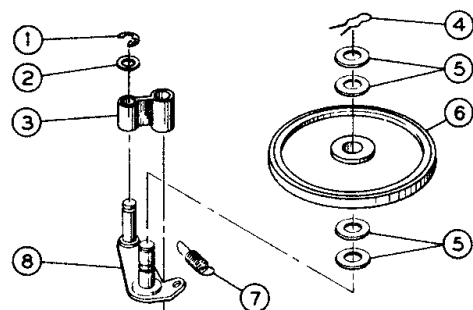
Remove metal Needle Guard from the Tone Arm. Turn POWER-VOLUME knob clockwise about one-half turn. Allow brief warm-up.

Move SPEED CONTROL lever to "33," "45," or "78" position for correct Turntable Speed.

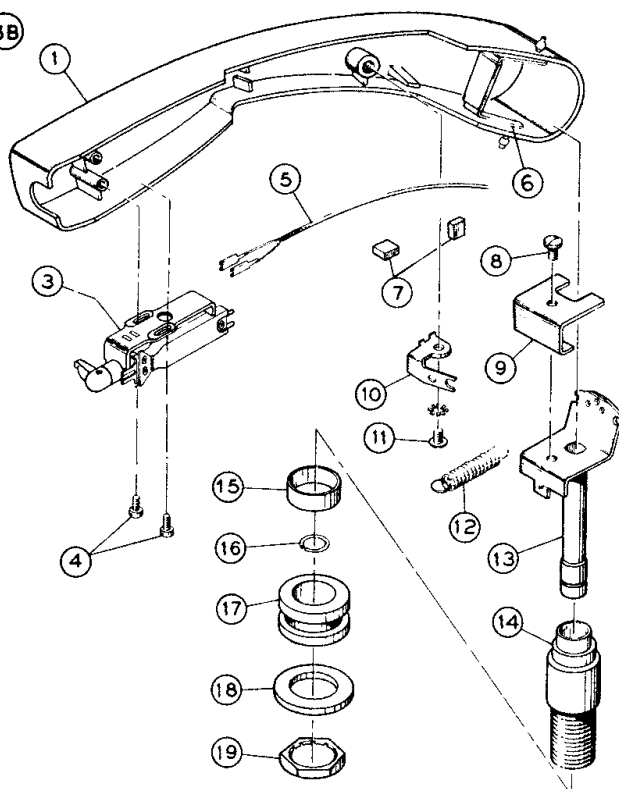
Place record over correct Spindle onto Turntable.

Turn NEEDLE SELECTOR to "33-45" before playing 33 1/3 or 45 r.p.m. records; to "78" before playing 78 r.p.m. records.

Set Tone Arm needle at start of record; adjust VOLUME and TONE as desired.



Motor Assembly



Pickup Arm Assembly